

WAAS CH 58209 W02A	APP CRS 019°	Rwy Idg TDZE 389 Apt Elev 389	5002 389 389
--	------------------------	---	---

RNAV (GPS) RWY 2

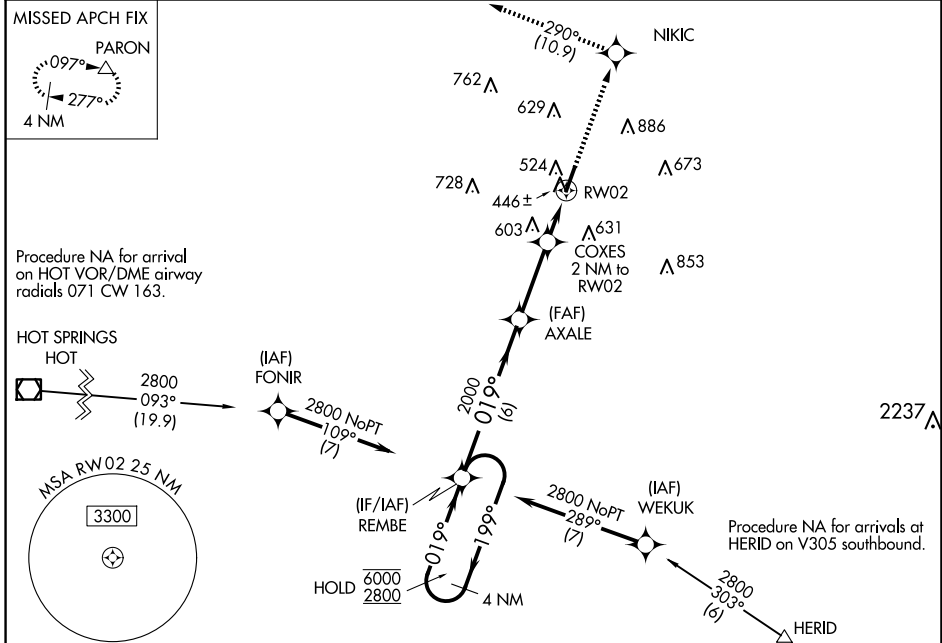
SALINE COUNTY RGNL (SUZ)

RNP APCH - GPS.

- ▼ Rwy 2 helicopter visibility reduction below 3/4 SM NA.
- ▲ For uncompensated Baro-VNAV systems, LNAV/VNAV NA below -15°C or above 54°C.

MISSED APPROACH: Climb to 2600 direct NIKIC and track 290° to PARON and hold.

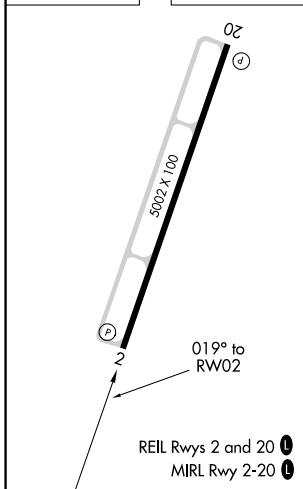
AWOS-3 132.125	LITTLE ROCK APP CON 119.5 306.2	UNICOM 122.8 (CTAF) 0
--------------------------	---	---------------------------------



SC-1, 20 MAR 2025 to 17 APR 2025

SC-1, 20 MAR 2025 to 17 APR 2025

ELEV 389	TDZE 389
----------	----------



VGSIs and RNAV glidepath not coincident (VGSIs Angle 3.00/TCH 56).		2600	NIKIC	PARON
4 NM Holding Pattern REMBE		↑	290° tr	△
6000	2800	2000	1060	RW02
←199°	019°→	019°	1.2 NM to RWY 2	
6 NM		3 NM	0.8	1.2 NM
CATEGORY	A	B	C	D
LPV DA		639-3/4	250 (300-3/4)	
LNAV/VNAV DA		670-7/8	281 (300-7/8)	
LNAV MDA	820-1	431 (500-1)	820-1 1/4	431 (500-1 1/4)
CIRCLING	940-1 551 (600-1)	1080-1 691 (700-1)	1200-2 1/2 811 (900-2 1/2)	1200-2 3/4 811 (900-2 3/4)