


WAAS CH 42536 W32A	APP CRS 323°	Rwy Idg TDZE 116 Apt Elev 130	9501
--	------------------------	---	-------------

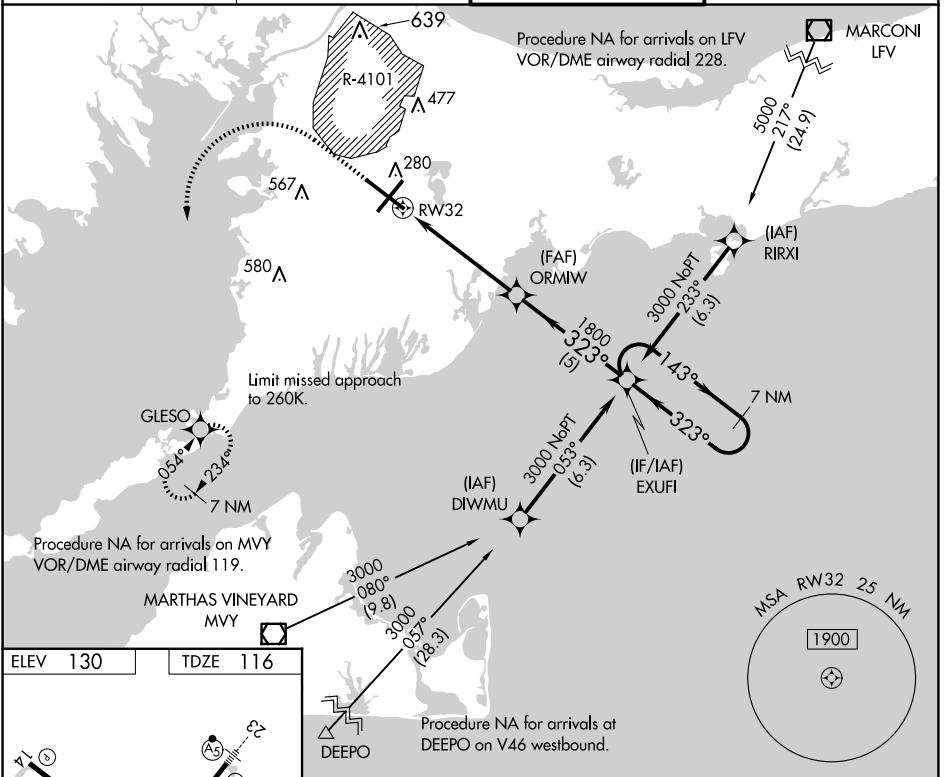
RNAV (GPS) RWY 32

CAPE COD COAST GUARD AIR STATION (F'MH)

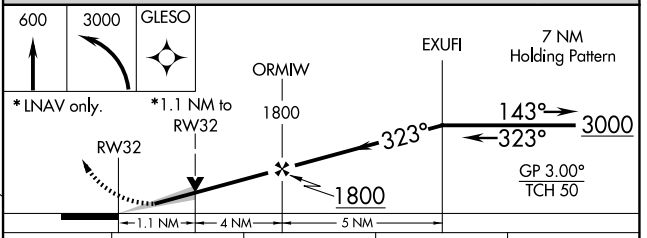
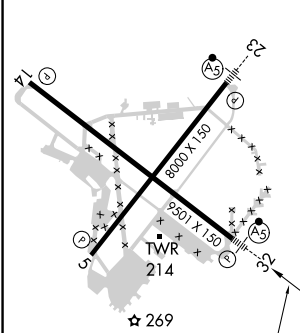
⚠ For uncompensated Baro-VNAV systems, LNAV/VNAV NA below -1 5°C (5°F) or above 54°C (130°F). DME/DME RNP-0.3 NA. Circling NA NE of Rwy 14 and NW of Rwy 23.

MALSR  **MISSED APPROACH:** Climb to 600 then climbing left turn to 3000 direct GLESO and hold, continue climb-in-hold to 3000.

ATIS 120.475 236.825	BOSTON APP CON 118.2 284.6	COAST GUARD TOWER 128.425 291.1	GND CON 124.15 275.8
--------------------------------	--------------------------------------	---	--------------------------------



ELEV 130	TDZE 116
----------	----------



CATEGORY	A	B	C	D
LPV DA		316/24	200 (200-½)	
LNAV/VNAV DA		429/26	313 (300-½)	
LNAV MDA	520/24	404 (400-½)	520/40	404 (400-¾)
CIRCLING	580-1 450 (500-1)	640-1 510 (600-1)	900-2¼ 770 (800-2¼)	900-2½ 770 (800-2½)

NE-1, 20 MAR 2025 to 17 APR 2025

NE-1, 20 MAR 2025 to 17 APR 2025