

APP CRS <b>343°</b>	Rwy Idg TDZE Apt Elev	<b>N/A</b> <b>N/A</b> <b>35</b>
------------------------	-----------------------------	---------------------------------------

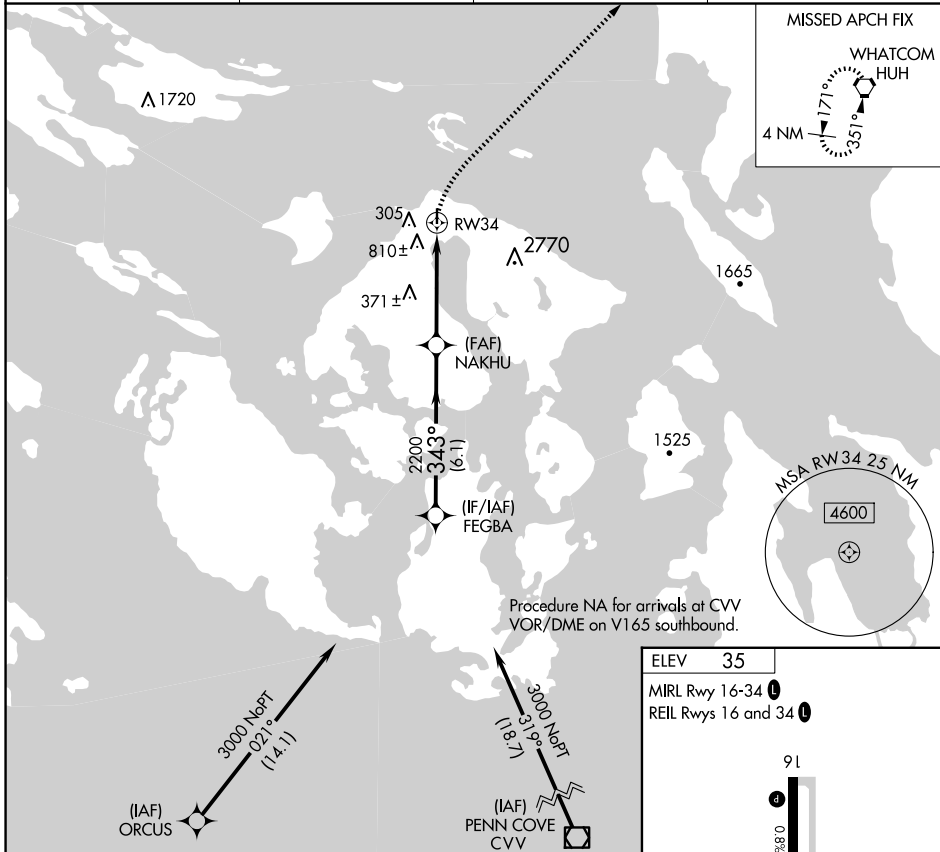
# RNAV (GPS)-A

## ORCAS ISLAND (ORS)

**▼** DME/DME RNP-0.3 NA. Helicopter visibility reduction below 1 SM NA.  
**▲** When local altimeter setting not received, use Friday Harbor altimeter setting and increase MDA 40 feet. Night landing: Rwy 34 NA.

**MISSED APPROACH:** Climbing right turn to 2000 direct HUH VORTAC and hold.

AWOS-3P <b>135.425</b>	WHIDBEY APP CON <b>118.2 285.65 (SOUTH)</b>	VICTORIA APP CON <b>132.7 290.8 (NORTH)</b>	CTAF <b>128.25 0</b>
---------------------------	--	--	-------------------------



NW-1, 20 MAR 2025 to 17 APR 2025

NW-1, 20 MAR 2025 to 17 APR 2025

