

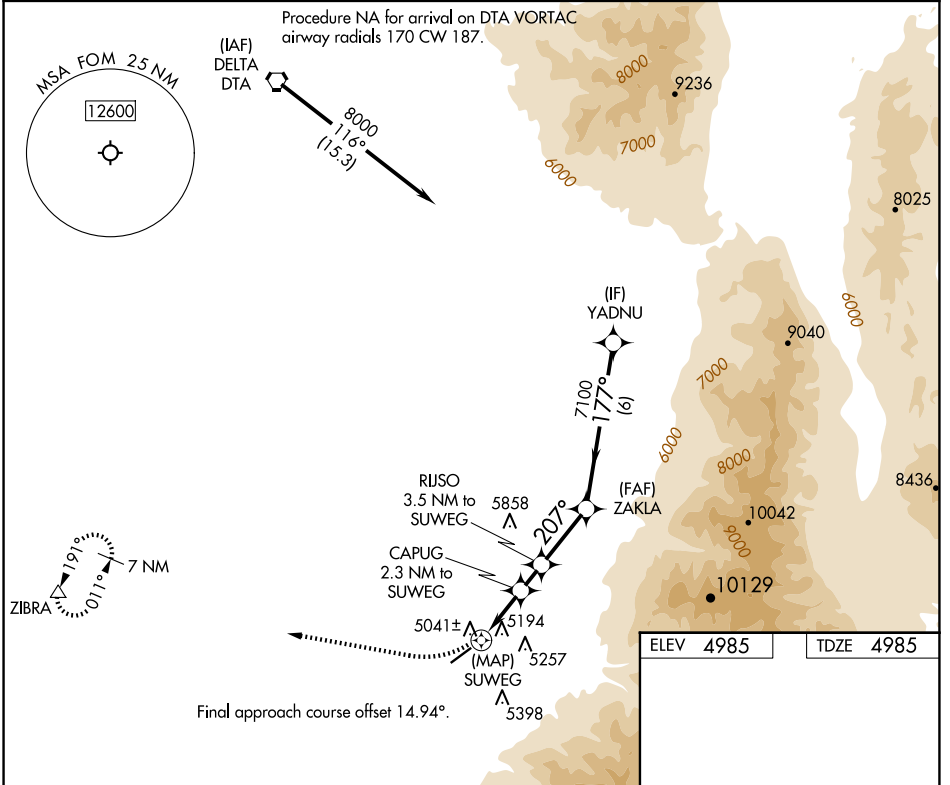
APP CRS	Rwy Idg	<b>5040</b>
<b>207°</b>	TDZE	<b>4985</b>
	Apt Elev	<b>4985</b>

# RNAV (GPS) RWY 22

FILLMORE MUNI (FOM)

RNP APCH.	MISSED APPROACH: Climbing right turn to 9600 direct ZIBRA and hold, continue climb-in-hold to 9600.
	Rwy 22 helicopter visibility reduction below 3/4 SM NA.

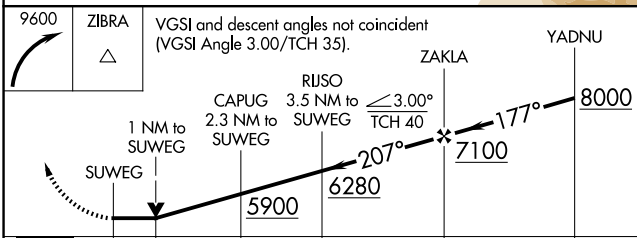
AWOS-3 <b>133.775</b>	SALT LAKE CITY CENTER <b>125.575 379.275</b>	UNICOM <b>122.8 (CTAF) 0</b>
--------------------------	---	---------------------------------



SW-4, 20 MAR 2025 to 17 APR 2025

SW-4, 20 MAR 2025 to 17 APR 2025

ELEV 4985	TDZE 4985
-----------	-----------



ZIBRA	VGSI and descent angles not coincident (VGSI Angle 3.00/TCH 35).
SUWEG	1 NM to SUWEG
CAPUG	2.3 NM to SUWEG
RIJSO	3.5 NM to SUWEG
ZAKLA	≤ 3.00° TCH 40
YADNU	8000
REIL Rws 4 and 22 MIRL Rwy 4-22 0	

0.5	1	1.3 NM	1.2 NM	2.6 NM	6 NM
CATEGORY	A	B	C	D	
RNAV MDA	5500-1	515 (600-1)	5500-1 5/8 515 (600-1 3/8)	NA	
CIRCLING	5620-1	635 (700-1)	6200-3 1215 (1300-3)	NA	