

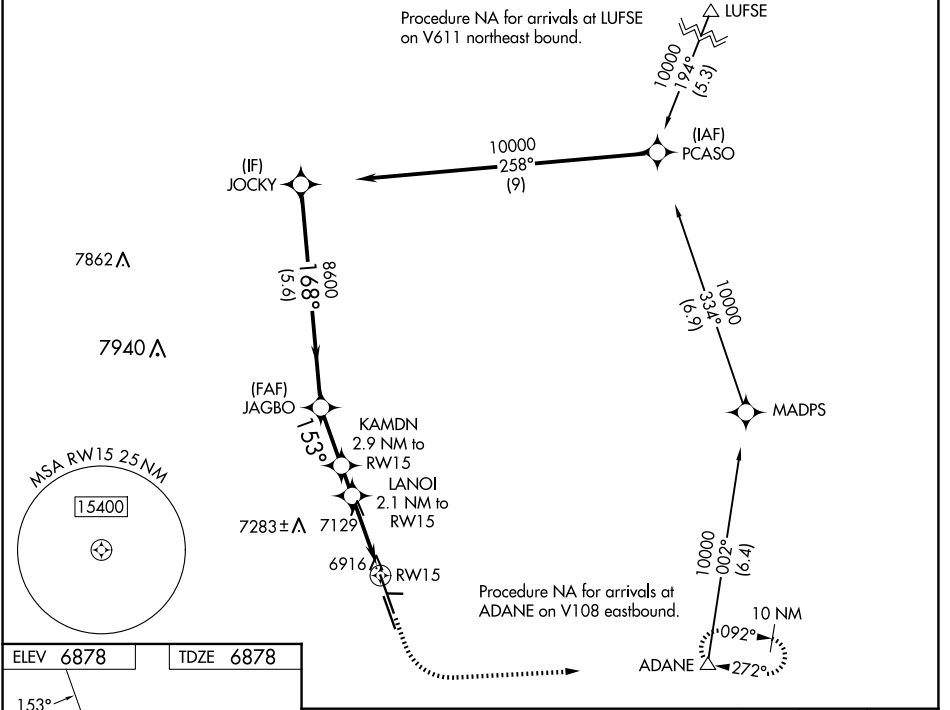
WAAS CH 50146 W15A	APP CRS 153°	Rwy Idg TDZE Apt Elev	6001 6878 6878
--	------------------------	-----------------------------	---

RNAV (GPS) RWY 15

MEADOW LAKE (F.L.Y.)

RNP APCH - GPS.	MISSED APPROACH: Climb to 7400, then climbing left turn to 9800 direct ADANE and hold, continue climb-in-hold to 9800.
<p>⚠ Rwy 15 helicopter visibility reduction below 1 SM NA. For uncompensated Baro-VNAV systems, LNAV/VNAV NA below -28°C or above 54°C.</p> <p>⚠ Circling NA southwest of Rwy 15-33. Circling NA to Rwys 16, 26, 8 and 34. Straight-in Rwy 15 NA at night, Circling Rwy 15 NA at night.</p>	

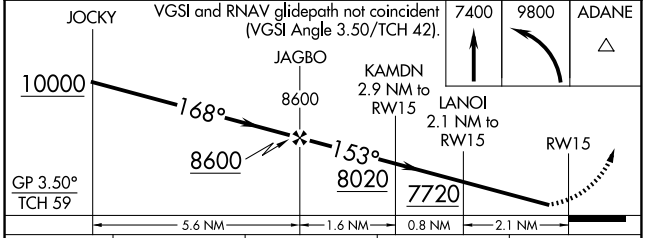
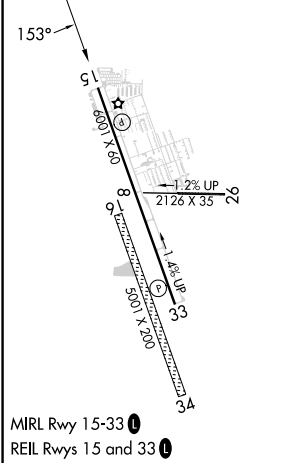
AWOS-3PT 118.45	SPRINGS APP CON 124.0 257.875	UNICOM 122.7 (CTAF) ①
---------------------------	---	---------------------------------



SW-1, 20 MAR 2025 to 17 APR 2025

SW-1, 20 MAR 2025 to 17 APR 2025

ELEV 6878	TDZE 6878
------------------	------------------



CATEGORY	A	B	C	D
LPV DA	7176-1	298 (300-1)		NA
LNAV/VNAV DA	7343-1 3/8	465 (500-1 3/8)		NA
LNAV MDA	7400-1	522 (600-1)		NA
CIRCLING	7400-1 522 (600-1)	7440-1 562 (600-1)		NA