

WAAS CH 56344 W16A	APP CRS 163°	Rwy Idg TDZE Apt Elev	4700 5374 5374
--	------------------------	-----------------------------	---

RNAV (GPS) RWY 16

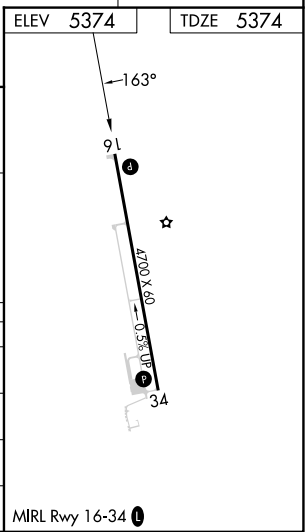
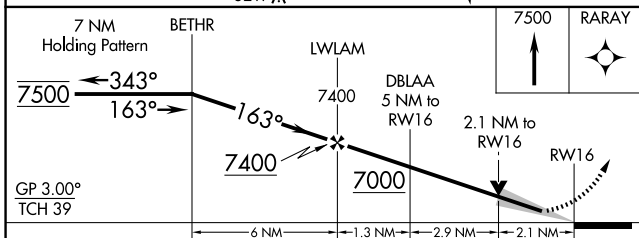
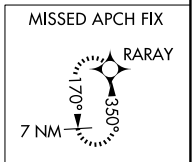
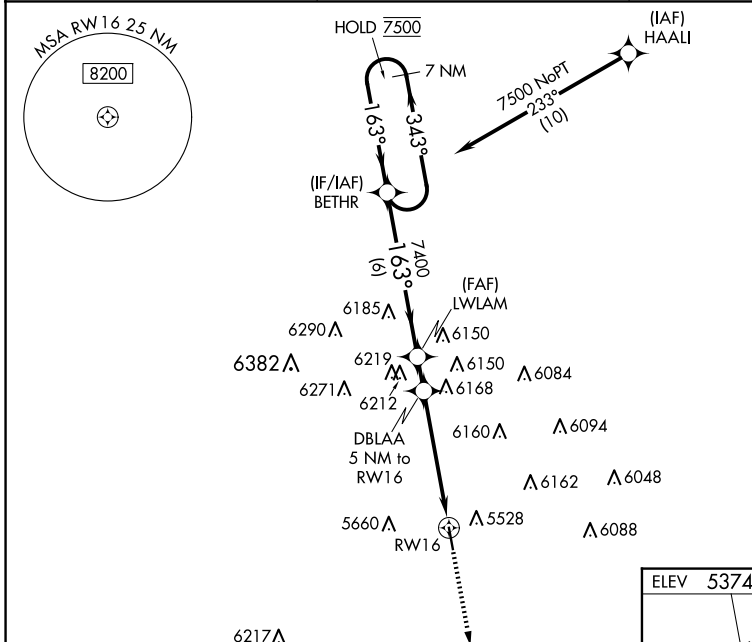
LIMON MUNI (LIC)

RNP APCH - GPS.

⚠ For uncompensated Baro-VNAV systems, LNAV/VNAV NA below -25°C or above 54°C. Baro-VNAV and VDP NA when using CFO altimeter setting. When local altimeter setting not received, use CFO altimeter setting and increase LPV DA to 5760 feet and all visibilities 1/8 SM. Increase LNAV/VNAV DA to 5845 feet and all visibilities 3/8 SM. Increase all MDAs 140 feet and LNAV visibilities Cat B/C 1/2 SM, and Circling all visibilities 1/2 SM.

MISSED APPROACH: Climb to 7500 direct RARAY and hold.

ASOS 121.125	DENVER CENTER 133.4 377.175	CTAF 122.9
------------------------	---------------------------------------	----------------------



CATEGORY	A	B	C	D
LPV DA	5624-1 250 (300-1)			NA
LNAV/VNAV DA	5709-1 335 (400-1)			NA
LNAV MDA	6080-1 706 (800-1)		6080-2 706 (800-2)	NA
C CIRCLING	6080-1 706 (800-1)		6220-2 1/2 846 (900-2 1/2)	NA

SW-1, 20 MAR 2025 to 17 APR 2025

SW-1, 20 MAR 2025 to 17 APR 2025