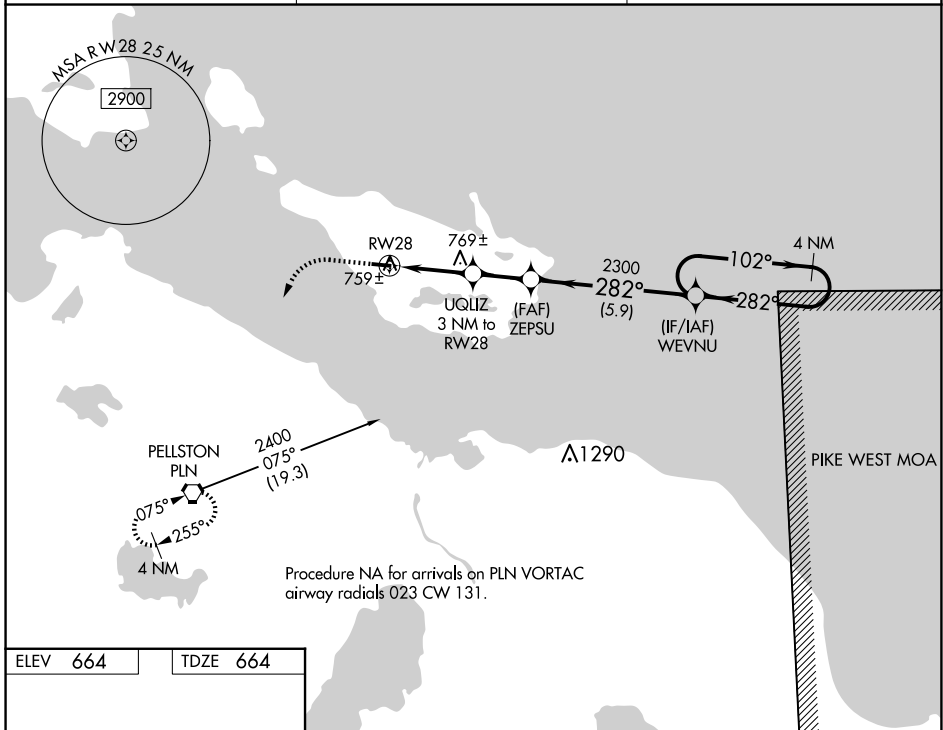


WAAS CH 42735 W28A	APP CRS 282°	Rwy Idg TDZE Apt Elev	3498 664 664
--	------------------------	-----------------------------	---

RNAV (GPS) RWY 28

BOIS BLANC ISLAND (6Y1)

NA	Use Cheboygan altimeter setting; when not received, Mackinac Island altimeter setting. DME/DME RNP-0.3 NA.	MISSED APPROACH: Climb to 3000 direct PELLSTON VORTAC and hold.
SLH AWOS-3 118.175	MINNEAPOLIS CENTER 134.6 354.05	CTAF 122.9



ELEV 664	TDZE 664
REIL Rwy 28	MIRL Rwy 10-28

3000	PLN	VGSJ and descent angles not coincident (VGSJ Angle 4.00/TCH 33).	
↑	◻	UQLIZ 3 NM to RWY 28	WEVNU 4 NM Holding Pattern
10	282°	2300	2300
3.498 X 75	0.6% UP	3.00° TCH 40	102°
28	282°	282°	282°
3 NM	2.1 NM	5.9 NM	
1620	2300	2300	
RWY 28	ZEPSU	WEVNU	
3000	PLN	VGSJ and descent angles not coincident (VGSJ Angle 4.00/TCH 33).	
↑	◻	UQLIZ 3 NM to RWY 28	WEVNU 4 NM Holding Pattern
10	282°	2300	2300
3.498 X 75	0.6% UP	3.00° TCH 40	102°
28	282°	282°	282°
3 NM	2.1 NM	5.9 NM	
1620	2300	2300	
RWY 28	ZEPSU	WEVNU	
3000	PLN	VGSJ and descent angles not coincident (VGSJ Angle 4.00/TCH 33).	
↑	◻	UQLIZ 3 NM to RWY 28	WEVNU 4 NM Holding Pattern
10	282°	2300	2300
3.498 X 75	0.6% UP	3.00° TCH 40	102°
28	282°	282°	282°
3 NM	2.1 NM	5.9 NM	
1620	2300	2300	
RWY 28	ZEPSU	WEVNU	

CATEGORY	A	B	C	D
LP MDA	1040-1	376 (400-1)		NA
LNAV MDA	1060-1	396 (400-1)		NA
C CIRCLING	1120-1	456 (500-1)		NA

EC-1, 20 MAR 2025 to 17 APR 2025

EC-1, 20 MAR 2025 to 17 APR 2025