

LAWRENCEVILLE-VINCENNES INTL (LWV)(KLWV) 3 NE UTC-6(-5DT) N38°45.86' W87°36.33'

ST LOUIS
H-5E, L-27D
IAP

430 B TPA—See Remarks NOTAM FILE LWV

RWY 18-36: H5199X100 (ASPH) S-75, D-100, 2D-180 MIRL

RWY 18: REIL. PVASI(P5IL)—GA 3.0° TCH 25'.

RWY 36: REIL. PAPI(P4L)—GA 3.0° TCH 41'.

RWY 09-27: H5198X100 (ASPH) S-75, D-100, 2D-180 MIRL

RWY 09: REIL. PVASI(P5IL)—GA 3.0° TCH 26'.

RWY 27: ODALS. REIL. PAPI(P4L)—GA 3.0° TCH 26'.

RWY 04U-22U: 1000X200 (TURF)

RWY 22U: Rgt t/c.

SERVICE: S4 FUEL 100LL, JET A LGT ACTIVATE ODALS Rwy 27; REIL

Rwy 09, 27, 18 and 36; PAPI Rwy 36; MIRL Rwy 09-27—CTAF.

MIRL Rwy 18-36 preset on low instnt to incr instnt—CTAF. BE ALERT:

ODALS for Rwy 27 are in operation simultaneously with REILs on Rwy

18. Rwy 09 and Rwy 18 PVASI unusable byd 8° left of centerline and

byd 6° right of centerline.

AIRPORT REMARKS: Attended Mon-Fri 1300-0000Z†, Sat-Sun

1500-2300Z†. Glider activity SR-SS. Rwy 09-27 and Rwy 18-36

have left hand t/c pattern for glider acft. Traffic pattern indicators on

sod Rwy 04U-22U. TPA—Rwy 09-27 and Rwy 18-36 1330 (900)

powered acft, Rwy 04U-22U 930 (500) max ultralights.

AIRPORT MANAGER: 618-943-5733

WEATHER DATA SOURCES: ASOS 118.0 (618) 943-5252.

COMMUNICATIONS: CTAF/UNICOM 122.8

Ⓡ EVANSVILLE APP/DEP CON 125.6 (1200-0500Z†)

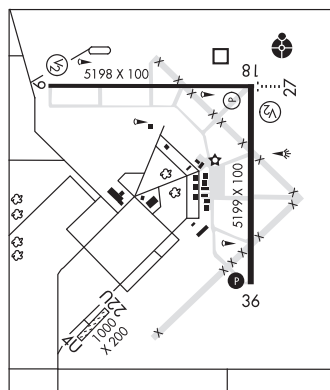
Ⓡ INDIANAPOLIS CENTER APP/DEP CON 128.3 (0500-1200Z†)

CLEARANCE DELIVERY PHONE: For CD when rco 125.6 ots, ctc Evansville Apch at 812-436-4689, when Apch clsd ctd

Indianapolis ARTCC at 317-247-2411.

RADIO AIDS TO NAVIGATION: NOTAM FILE LWV.

(T) DME 108.8 LWV Chan 25 N38°46.19' W87°36.23' at fld. 430.



LEWIS UNIVERSITY (See CHICAGO/ROMEDEVILLE on page 48)

LICOL N39°54.71' W89°36.19' NOTAM FILE STL.

ST. LOUIS

NDB (LOMW) 375 LQ 221° 5.3 NM to Abraham Lincoln Capital. 579/1W.

LINCOLN

LOGAN CO (AAA)(KAAA) 2 NE UTC-6(-5DT) N40°09.52' W89°20.10'

CHICAGO

594 B NOTAM FILE AAA

L-27C

RWY 03-21: H4000X75 (ASPH) S-12.5 MIRL

RWY 03: REIL. PAPI(P4L)—GA 3.5° TCH 26'.

RWY 21: PAPI(P4L)—GA 3.0° TCH 25'. Tree.

RWY 14-32: 3021X135 (TURF)

RWY 14: Thld dspclcd 307'. Trees.

RWY 32: Road.

SERVICE: S4 FUEL 100LL LGT ACTIVATE REIL Rwy 03, PAPI Rwy 03

and Rwy 21, MIRL Rwy 03-21—CTAF.

AIRPORT REMARKS: Attended Mon-Sat irregularly. For svc call

309-838-5694 or 217-737-3517. Rwy 14-32 PPR to use Dec-Apr,

after rain call 217-732-6400. Rwy 03-21 has 225' stopway

northeast end. Temporary and long-term hngr space avbl daily, weekly,

monthly, yearly.

AIRPORT MANAGER: 217-732-6400

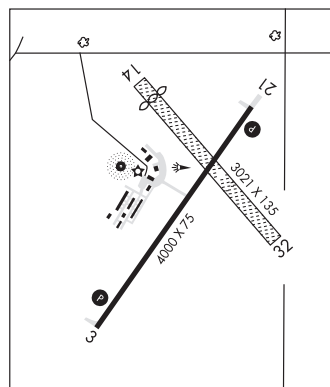
WEATHER DATA SOURCES: AWOS-3 118.775 (217) 732-9605.

COMMUNICATIONS: CTAF/UNICOM 122.8

Ⓡ SAINT LOUIS APP/DEP CON 126.15 (1200-0400Z†)

KANSAS CITY CENTER APP/DEP CON 127.275 (0400-1200Z†)

CLEARANCE DELIVERY PHONE: For CD ctc St Louis Apch 314-890-1017.



CONTINUED ON NEXT PAGE

CONTINUED FROM PRECEDING PAGE

RADIO AIDS TO NAVIGATION: NOTAM FILE SPI.

SPINNER (VH) (H) VORTACW 112.7 SPI Chan 74 N39°50.38' W89°40.66' 040° 24.8 NM to fld. 586/1W.

TACAN AZIMUTH unusable:

025°-045° byd 15 NM blo 3,000'

190°-244° byd 15 NM blo 4,000'

245°-300° byd 10 NM

VOR unusable:

269°-271° byd 40 NM

328°-331° byd 40 NM

ABRAHAM NDB (MHW) 329 AAA N40°09.61' W89°20.28' at fld. 591/0E. NOTAM FILE AAA.

LITCHFIELD MUNI (3LF) 2 SW UTC-6(-5DT) N39°09.75' W89°40.48'

ST LOUIS

691 B NOTAM FILE 3LF

L-27C

RWY 18-36: H4002X75 (ASPH) MIRL

IAP

RWY 18: REIL. PAPI(P2L)—GA 3.0° TCH 23'. Rgt tfc.

RWY 36: REIL. PAPI(P2L)—GA 3.0° TCH 25'.

RWY 09-27: H3900X75 (ASPH) MIRL

RWY 09: REIL. PAPI(P2L)—GA 3.0° TCH 25'. Road. Rgt tfc.

RWY 27: REIL. PAPI(P2L)—GA 3.0° TCH 24'.

SERVICE: S4 FUEL 100LL, JET A LGT Actvt REIL Rwy 09, 27, 18 & 36;

PAPI Rwy 09, 27, 18 & 36; MIRL Rwy 09-27 & 18-36; Twy

lgts—CTAF. MIRL Rwy 18-36 & Twy C preset on low instst, to incr instst

& actvt—CTAF.

AIRPORT REMARKS: Attended 1400-2300Z†. Self svc 100LL fuel avbl 24

hrs. Aerobatic area 1700'-4200' MSL above arpt. NOTE: See Special

Notices—Aerobatic Practice Area in Illinois.

AIRPORT MANAGER: 217-556-4299

WEATHER DATA SOURCES: AWOS-3PT 118.175 (217) 324-4735.

COMMUNICATIONS: CTAF/UNICOM 122.8

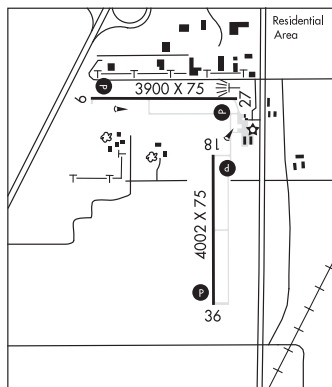
Ⓡ SAINT LOUIS APP/DEP CON 124.2

CLEARANCE DELIVERY PHONE: For CD ctc St Louis Apch at 314-890-1017.

RADIO AIDS TO NAVIGATION: NOTAM FILE STL.

VANDALIA (L) DME 116.95 VLA Chan 116(Y) N39°05.63'

W89°09.74' 280° 24.3 NM to fld. 607.



LOGAN CO (See LINCOLN on page 65)

LUKOW N41°01.07' W87°54.23' NOTAM FILE IKK.

CHICAGO

NDB (LOMW) 272 IK 039° 4.1 NM to Greater Kankakee. 669/0E.

MACOMB MUNI (MQB)(KMQB) 3 N UTC-6(-5DT) N40°31.21' W90°39.14'

CHICAGO

706 B NOTAM FILE MQB

H-5D, L-27B

RWY 09-27: H5100X100 (ASPH) S-18, D-21 HIRL 0.5% up W

IAP

RWY 09: REIL. PAPI(P4L)—GA 3.0° TCH 43'.

RWY 27: REIL. PAPI(P4L)—GA 3.0° TCH 40'.

RWY 18-36: 3719X190 (TURF) 0.3% up N

SERVICE: S4 FUEL 100LL, JET A LGT HIRL Rwy 09-27 preset on low

instst; to incr instst and actvt REIL Rwy 09 and 27, and twy lgts—CTAF.

Rwy 09 PAPI unusbl byd 8 degs right of cntrln.

AIRPORT REMARKS: Attended Mon-Fri 1400-2300Z†, Sat 1400-1800Z†,

Sun unattended. Rwy 18-36 seasonal, Nov 1-May 1 ctc arpt

manager 309-833-3324. Rwy 18-36 turf width 200' south of

intersection with Rwy 09-27.

AIRPORT MANAGER: 309-833-3324

WEATHER DATA SOURCES: AWOS-3 119.025 (309) 837-4022.

COMMUNICATIONS: CTAF/UNICOM 122.8

RCO 122.2 (KANKAKEE RADIO)

Ⓡ CHICAGO CENTER APP/DEP CON 135.6

CLEARANCE DELIVERY PHONE: For CD if una to ctc on FSS freq, ctc Chicago

ARTCC at 630-906-8921.

RADIO AIDS TO NAVIGATION: NOTAM FILE BRL.

BURLINGTON (L) (L) VORW/DME 111.4 BRL Chan 51 N40°43.41'

W90°55.55' 129° 17.5 NM to fld. 727/5E.

NDB (MHW) 251 JZY N40°31.09' W90°33.63' 271° 4.2 NM to fld. 621/1E. NDB unmonitored 2300-1400Z†.

LOC 110.3 I-MQB Rwy 27. LOC unmonitored.

