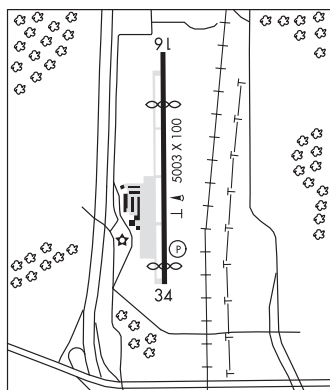


ROSEBURG RGNL (RBG)(KRBG) 1 NW UTC-8(-7DT) N43°14.36' W123°21.35'
 533 B NOTAM FILE RBG
RWY 16-34: H5003X100 (ASPH) S-42, D-54, 2D-88 MIRL

KLAMATH FALLS
H-1B, L-1A
IAP

0.7% up N
RWY 16: REIL. Thld dspcd 1100'. Hill.
RWY 34: REIL. PAPI(P4R)—GA 4.0° TCH 53'. Thld dspcd 372'. Road.
SERVICE: S4 **FUEL** 100LL, JET A **OX** 1 **LGT** ACTIVATE REIL Rwy 16 and Rwy 34, MIRL Rwy 16-34—CTAF. Rwy 34 PAPI opr continuously.
AIRPORT REMARKS: Attended 1600-0100Z†. Waterfowl on and invof arpt. Rwy 16 has a 150' blast pad marked with yellow chevrons. Segmented circle nstd, marked with white tires.
AIRPORT MANAGER: 541-672-7701
WEATHER DATA SOURCES: ASOS 135.475 (541) 673-1483.
COMMUNICATIONS: CTAF/UNICOM 122.8
 RCO 122.3 (MC MINNVILLE RADIO)
 Ⓡ **SEATTLE CENTER APP/DEP CON** 127.55
CLEARANCE DELIVERY PHONE: For CD if una to ctc on FSS freq, ctc Seattle ARTCC at 253-351-3694.
RADIO AIDS TO NAVIGATION: NOTAM FILE MMV.

(L) (L) VOR/DME 108.2 RBG Chan 19 N43°10.94' W123°21.13' 337° 3.4 NM to fld. 1309/20E.
 DME unusable:
 070°-130° byd 20 NM blo 8,000'
 130°-190° byd 30 NM blo 7,000'
 240°-320° byd 25 NM blo 5,000'
 VOR unusable:
 070°-130° byd 20 NM blo 8,000'
 130°-150° byd 20 NM blo 7,000'
 240°-290° byd 25 NM blo 5,000'



SALEM

M McNARY FLD (SLE)(KSLE) P (ARNG) 2 SE UTC-8(-7DT) N44°54.57' W123°00.15'
 213 B TPA—See Remarks Class I, ARFF Index B NOTAM FILE SLE MON Airport
RWY 13-31: H5811X150 (ASPH-GRVD) S-120, D-189, 2S-154, 2D-280, 2D/2D2-759 PCR 510 F/C/X/T HIRL 0.3% up SE
RWY 13: ODALS. REIL. VASI(V4L)—GA 3.0° TCH 50'. RVR-R Road.
RWY 31: MALSR. RVR-T Tree.
RWY 16-34: H5146X100 (ASPH-GRVD) S-39.5, D-52
 PCN 15 F/D/X/T MIRL 0.3% up S
RWY 16: REIL. PAPI(P4L)—GA 3.0° TCH 38'. Road.
RWY 34: REIL. PAPI(P4L)—GA 4.0° TCH 42'. Tree.

SEATTLE
H-1B, L-1B
IAP, AD

LAND AND HOLD—SHORT OPERATIONS

LDG RWY	HOLD—SHORT POINT	AVBL LDG DIST
RWY 31	16-34	3150
RWY 34	13-31	3050

RUNWAY DECLARED DISTANCE INFORMATION

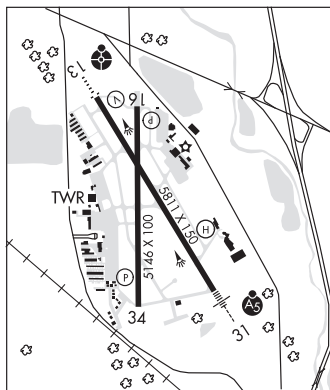
RWY 13: TORA-5811 TODA-5811 ASDA-5811 LDA-5811
RWY 16: TORA-5145 TODA-5145 ASDA-5145 LDA-5145
RWY 31: TORA-5811 TODA-5811 ASDA-5811 LDA-5811
RWY 34: TORA-5145 TODA-5145 ASDA-5145 LDA-5145

SERVICE: S4 **FUEL** 100LL, JET A **OX** 1, 3 **LGT** When ATCT clsd
 ACTVT MALSR Rwy 31; ODAL Rwy 13; REIL Rwy 13, 16, 34; HIRL Rwy 13-31, MIRL Rwy 16-34—CTAF. REIL Rwy 16, PAPI Rwy 16 and Rwy 34 and bcn OTS indefy.

MILITARY—FUEL (NC-100LL)—Self svc avbl H24. A—Avbl after bus hr with PN C503-508-4178/593-364-0111.)

NOISE: Noise abatement procs in efct; Avoid oftc residential areas.

AIRPORT REMARKS: Attended Mon-Fri 1500-0300Z†, Sat-Sun 1500-0100Z†. Bird haz: waterfowl invof arpt; geese trsn Class D TPA Oct-May. 100LL self svc H24. Aft hr Jet A PPR 503-508-4178 or 503-364-4158. Arpt clsd aft hvy snow. Arpt cond unmnt 0000-1600Z† and wkend. Rising trrn and trees W and S of arpt and Rwy 34 extdd cntrln. Trees on Rwy 16 extdd cntrln. Ngt ops not rcmd both rwys. PPR for unscheduled air carrier ops gtr than 30 pax seats - amgr. Acr ramp prkg - amgr. Twy A fm Twy L to Twy L9 not vsb fm ATCT. Ovngt tiedown and coml air charter ldg fee. Lndg fee for coml & itrnrtt with FAA certified max gross Indg wt gtr than 7000 lb.



CONTINUED ON NEXT PAGE

CONTINUED FROM PRECEDING PAGE

AIRPORT MANAGER: 503-589-2057

WEATHER DATA SOURCES: ASOS 124.55 (458) 322-0305.

COMMUNICATIONS: CTAF 119.1 ATIS 124.55 UNICOM 122.95

SALEM RCO 122.6 (MC MINNVILLE RADIO)

① SEATTLE CENTER APP/DEP CON 125.8

SALEM TOWER 119.1 (1500-0500Z±) GND CON 121.9

CLEARANCE DELIVERY PHONE: For CD if una to ctc on FSS freq, ctc Seattle ARTCC at 253-351-3694.

AIRSPACE: CLASS D svc 1500-0500Z±; other times CLASS E.

RADIO AIDS TO NAVIGATION: NOTAM FILE MMV.

NEWBERG (VH) (DH) VORW/DME 117.4 UBG Chan 121 N45°21.19' W122°58.69' 161° 26.6 NM to fld.
1443/21E.

VOR unusable:

095°-105° byd 40 NM

106°-120° byd 40 NM blo 7,800'

106°-120° byd 60 NM

135°-328° byd 40 NM

329°-346° byd 40 NM blo 5,000'

329°-346° byd 70 NM

347°-080° byd 40 NM

TURNO NDB (LOM) 266 SL N44°50.85' W122°57.06' 312° 4.3 NM to fld.

ILS/DME 110.3 I-SLE Chan 40 Rwy 31. Class IT. LOM TURNO NDB.

• • • • •
HELIPAD H1: H37X37 (CONC)

SALEM N44°55.14' W123°00.54'
RCO 122.6 (MC MINNVILLE RADIO)SEATTLE
L-1B

SALMON BAR (See IMNAHA on page 179)
