

VICKSBURG TALLULAH RGNL (TVR)(KTVR) 9 E UTC-6(-5DT) N32°21.10' W91°01.66'

86 B TPA—1086(1000) NOTAM FILE TVR

RWY 18-36: H5002X100 (ASPH) S-60, D-75 MIRL

RWY 18: REIL. PAPI(P4L)—GA 3.0° TCH 50'. Trees.

RWY 36: SSALR. PAPI(P4L)—GA 3.0° TCH 50'. Trees.

RUNWAY DECLARED DISTANCE INFORMATION

RWY 18: TORA-5002 TODA-5002 ASDA-5002 LDA-5002

RWY 36: TORA-5002 TODA-5002 ASDA-5002 LDA-5002

SERVICE: S4 **FUEL** 100LL, JET A **LGT** MIRL Rwy 18-36, REIL Rwy 18, SSALR Rwy 36 preset low ints dusk-dawn, to increase ints ACTIVATE—CTAF.

AIRPORT REMARKS: Attended 1300-0100Z‡. Holidays 1500-2000Z‡. For arpt mgr aft hrs call 318-366-1615. PAEW on arpt. Migratory birds invof arpt. Crop dusting activity 2 NM radius of arpt. Pilots in tfc pattern are requested to avoid over flight of Mound, LA 1/2 mile south and east of Rwy 36.

AIRPORT MANAGER: 318-574-5841

WEATHER DATA SOURCES: ASOS 118.525 (318) 574-4866.

COMMUNICATIONS: CTAF/UNICOM 123.0

MEMPHIS CENTER APP/DEP CON 132.5

CLEARANCE DELIVERY PHONE: For CD ctc Memphis ARTCC at 901-368-8453/8449.

RADIO AIDS TO NAVIGATION: NOTAM FILE GWO.

MAGNOLIA (VH) (H) VORTACW 113.2 MHz Chan 79 N32°26.04' W90°05.99' 265° 47.4 NM to fld. 407/1W.

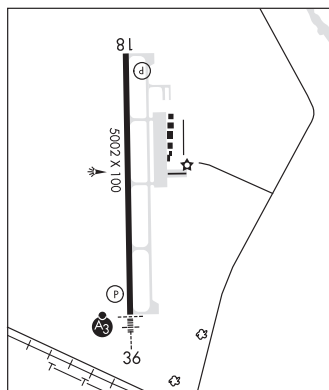
TACAN AZIMUTH unusable:

240°-275° byd 30 NM blo 2,000'

DME unsbl 240-275 byd 30 NM blo 2000'

TALLULAH NDB (MHW/LOM) 344 TKH N32°14.72' W91°01.55' 357° 6.4 NM to fld. 79/2E. NOTAM FILE DRI.

ILS 109.7 I-TV Rwy 36. Class ID.



MEMPHIS

H-6J, L-18F

IAP

TENSAS PARISH (See ST JOSEPH on page 125)

THE RED RIVER (See COUSHATTA on page 94)

THIBODAUX MUNI (L83) 3 S UTC-6(-5DT) N29°44.87' W90°49.97'

9 B NOTAM FILE DRI

RWY 08-26: H2999X75 (ASPH) S-6 MIRL

RWY 08: REIL. Trees.

RWY 26: REIL. Thld dsplcd 90'. Trees.

SERVICE: S2 **FUEL** 100LL **LGT** REIL Rwy 08-26, MIRL Rwy 08 and Rwy 26 preset low ints, to increase ints ACTVT—CTAF.

AIRPORT REMARKS: Attended 1400-2300Z‡. For arpt attendant after hrs call 985-209-4697. Wildlife on or near the rwy safety area. 100LL fuel avbl by appt call 985-209-4697. Rwy 08-26 agriculture washdown pad 500' north of rwy at midfield. Trees 60 ft tall; 160 ft north and south of cntrln pent the 7:1 trsln slp Rwy 08. Ctc arpt mgr for dsngd ramp space for pub use at arpt.

AIRPORT MANAGER: 985-446-7208

COMMUNICATIONS: CTAF/UNICOM 122.8

Ⓡ **NEW ORLEANS APP/DEP CON** 118.9

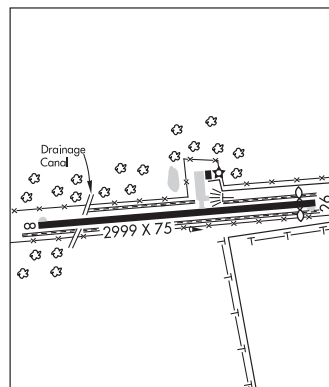
CLEARANCE DELIVERY PHONE: For CD ctc New Orleans Apch at 504-471-4350.

RADIO AIDS TO NAVIGATION: NOTAM FILE DRI.

TIBBY (VL) (DH) VOR/DME 117.15 TBD Chan 118(Y) N29°39.86' W90°49.75' 356° 5.0 NM to fld. 10/2E.

VOR unusable:

244°-255° byd 40 NM



NEW ORLEANS

L-21B, 22F, GOAC

IAP

TIBBY N29°39.86' W90°49.75' NOTAM FILE DRI.

(VL) (DH) VOR/DME 117.15 TBD Chan 118(Y) 356° 5.0 NM to Thibodaux Muni. 10/2E.

VOR unusable:

244°-255° byd 40 NM

RCO 122.1R 117.15T (DE RIDDER RADIO)

NEW ORLEANS

H-7D, L-21B, 22F, GOMC

UNION PARISH (See FARMERVILLE on page 98)