

TUNICA MUNI (UTA)(KUTA) 1 E UTC-6(-5DT) N34°41.10' W90°20.87'

MEMPHIS
H-6J, L-18G
IAP

194 B NOTAM FILE UTA MON Airport
RWY 17-35: H8500X150 (ASPH-GRVD) S-94, D-215, 2T-510,
 2D-460, 2D/2D2-720 PCN 45 F/B/X/U HIRL
RWY 17: REIL. PAPI(P4L)—GA 3.0° TCH 50'.
RWY 35: MALSR. PAPI(P4L)—GA 3.0° TCH 47'. Rgt tfc.
SERVICE: S4 FUEL 100LL, JET A OX 1, 3 LGT ACTVT MALSR Rwy
 35; REL Rwy 17; HIRL Rwy 17-35—CTAF.

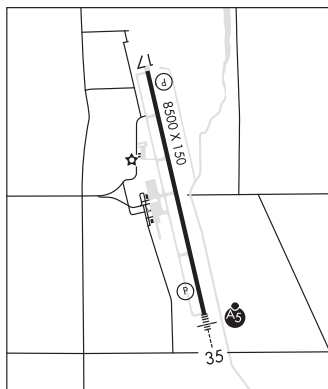
AIRPORT REMARKS: Attended 1200-0300Z†. Geese invof arpt Nov-Feb.
 Agricultural act invof arpt dalgt. Aft hr fuel-AMGR. 24 hr PPR coml
 flights over 30 pax-AMGR. Clsd to sked acr ops with more than 9 pax
 seats and unsked acr ops with more than 30 pax seats. Rwy 35 calm
 wind rwy.

AIRPORT MANAGER: 662-357-7320
WEATHER DATA SOURCES: AWOS-3 118.075 (662) 363-1652.
COMMUNICATIONS: CTAF/UNICOM 123.0

Ⓜ **MEMPHIS APP/DEP CON** 119.1
 CLNC DEL 118.9

CLEARANCE DELIVERY PHONE: For CD ctc Memphis Apch at 901-842-8457.
RADIO AIDS TO NAVIGATION: NOTAM FILE MEM.

MEMPHIS (H) (H) VORTACW 117.5 MEM Chan 122 N35°00.91'
 W89°58.99' 221° 26.7 NM to fld. 363/1E.
ILS/DME 110.95 I-UTA Chan 46(Y) Rwy 35. Class 1E.



TUNNG N34°23.11' W89°37.56' NOTAM FILE GWO.

MEMPHIS
L-18G

NDB (LOMW) 426 UV 092° 4.4 NM to University-Oxford. 410/1W. loc & NDB unmonitored 2300-1400Z†.

TUPELO RGNL (TUP)(KTUP) P (ARNG) 3 W UTC-6(-5DT) N34°16.14' W88°46.19'

MEMPHIS
H-6J, L-18G
IAP, DIAP, AD

347 B Class I, ARFF Index A NOTAM FILE TUP
RWY 18-36: H7150X150 (ASPH-GRVD) S-69, D-91, 2D-168

PCN 72 F/C/W/T HIRL
RWY 18: REIL. PAPI(P4L)—GA 3.0° TCH 45'.
RWY 36: MALSR. PAPI(P4L)—GA 3.0° TCH 55'.
SERVICE: S4 FUEL 100LL, JET A, A+, A1+ OX 3, 4 LGT ACTVT
 MALSR Rwy 36; REIL Rwy 18; HIRL Rwy 18-36—CTAF. PAPI Rwy
 18 and 36 opr consly.

MILITARY—FUEL A+ (avbl 1200-0400Z†, C931-492-2160. OT
 C931-492-2160, \$50 fee, 30 min PN.) (NC-100LL, A1+)
AIRPORT REMARKS: Attended 1200-0400Z†. A+ fuel svc avbl 24 hrs with
 credit card. Hel ops all hrs 700 ft AGL E of rwy 18/36-ctc CTAF for
 adzy. Acr ramp rstrd to acr ops excp with PPR Call amgr Mon-Fri
 1400-2300Z†; 662-841-6570. PPR for unsked acr ops with more
 than 30 pax seats call amgr 662-841-6570. Index B ARFF eqpt avbl
 only during sked acr ops.

MILITARY REMARKS: CAUTION Hel ops all hrs 700 ft AGL E of Rwy 18-36-ctc
 CTAF for adzy. **ARNG** Support fac opr Mon-Fri 1300-2200Z† exc hol.
 Ltd prk avbl. No tsnt fuel avbl. DSN 293-3438, C662-891-4438.

AIRPORT MANAGER: 662-841-6570
WEATHER DATA SOURCES: ASOS 133.525 (662) 840-8528.

COMMUNICATIONS: CTAF 118.775
TUPELO RCO 122.5 (GREENWOOD RADIO)

Ⓜ **MEMPHIS CENTER APP/DEP CON** 128.5
TOWER 118.775 (1200-0400Z†) **GND CON** 121.825
AIRSPACE: CLASS D svc 1200-0400Z†; other times CLASS E.

RADIO AIDS TO NAVIGATION: NOTAM FILE TUP.
(L) (L) VOR/DME 109.8 OTB Chan 35 N34°13.43' W88°47.84' 023° 3.0 NM to fld. 364/4E.

VOR portion unusable:
 190°-220°

VERON NDB (LOMW) 420 TU N34°10.82' W88°46.12' 001° 5.3 NM to fld. 325/2W.

ILS/DME 108.5 I-TUP Chan 22 Rwy 36. Class IA. LOM VERON NDB. Unmonitored 0500-1100Z†. LOC unusable
 byd 025° right of course. Autopilot cpd apcs NA blw 1,160' MSL.

