

## BROWNFIELD

**TERRY CO** (BFE)(KBFE) 4 E UTC-6(-5DT) N33°10.39' W102°11.58'

3265 B NOTAM FILE FTW

**RWY 02-20:** H5218X75 (ASPH) S-50, D-65 MIRL

**RWY 02:** PAPI(P2L)—GA 3.0° TCH 43'.

**RWY 20:** PAPI(P2L)—GA 3.0° TCH 41'. Trees.

**RWY 13-31:** H2765X75 (ASPH) S-12 0.4% up NW

**RWY 13:** P-line.

**RWY 31:** Road.

**SERVICE:** FUEL 100LL, JET A LGT MIRL Rwy 02-20 preset low intensity, to increase intensity ACTIVATE—CTAF.

**AIRPORT REMARKS:** Unattended. Birds and wildlife on and in/ov arpt. 100LL fuel self svc 24 hrs. Rwy 02-20 parl twy poor, extsv cracks.

**AIRPORT MANAGER:** (806) 543-9840

**COMMUNICATIONS:** CTAF/UNICOM 122.8

Ⓡ LUBBOCK APP/DEP CON 119.2 119.9

**CLEARANCE DELIVERY PHONE:** For CD ctc Fort Worth ARTCC at 817-858-7584.

**RADIO AIDS TO NAVIGATION:** NOTAM FILE LBB.

**LUBBOCK (L) (L) VORTACW** 109.2 LBB Chan 29 N33°42.30' W101°54.84' 193° 34.8 NM to fld. 3310/11E.

VOR unusable.

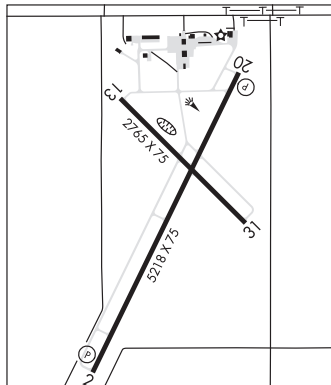
040°-050° byd 38 NM blo 5,300'

210°-260° byd 25 NM blo 6,000'

ALBUQUERQUE

H-6G, L-6H

IAP



**BROWNSVILLE/SOUTH PADRE ISLAND INTL** (BRO)(KBRO) 4 E UTC-6(-5DT) N25°54.37'

W97°25.56'

22 B AOE ARFF Index—See Remarks NOTAM FILE BRO

**RWY 13-31:** H7399X150 (ASPH-GRVD) S-75, D-170, 2S-175, 2D-240 PCN 67 R/D/X/T HIRL

**RWY 13:** MALSR. RVR-T Tree.

**RWY 31:** PAPI(P4L)—GA 3.0° TCH 68'. RVR-R Tree.

**RWY 18-36:** H6000X150 (ASPH-GRVD) S-75, D-144, 2S-175, 2D-150 PCN 7 F/C/X/T MIRL

**RWY 18:** PAPI(P4L)—GA 3.0° TCH 50'. Thld dsplcd 190'. Tree.

**RWY 36:** VASI(V4L)—GA 3.0° TCH 51'. Tree.

**RUNWAY DECLARED DISTANCE INFORMATION**

**RWY 13:** TORA-7399 TODA-7399 ASDA-7399 LDA-7399

**RWY 18:** TORA-6000 TODA-6000 ASDA-6000 LDA-5810

**RWY 31:** TORA-7399 TODA-7399 ASDA-7399 LDA-7399

**RWY 36:** TORA-5532 TODA-5532 ASDA-5532 LDA-5532

**SERVICE:** S4 FUEL 100LL, JET A OX1, 3 LGT When ATCT clsd ACTVT MALSR Rwy 13—CTAF.

**AIRPORT REMARKS:** Attended continuously. Birds on and in/ov arpt. For actf svc call 956-542-5852 or 956-542-9111. Lgtd oil derricks lctn aprxly 5 NM NE max 500 ft AGL. Class I, ARFF Index B. When ATCT clsd req ARFF assistance thru Houston ARTCC or flt svc. PPR 24 hrs for unskd acr opns with more than 30 psgr seats call AMGR. Txy J north of Txy H open to tfc under 12500 lbs. Landing fee. For cust and bdr protection svcs ctc: 956-547-5760 dly 1400-0600Z†; kbro.gap@cbp.dhs.gov. Aft hrs: 956-983-5704, 956-982-3653; brownsvilleopscenter@cbp.dhs.gov. Flight Notification Service (ADCUS) available.

**AIRPORT MANAGER:** 956-459-1227

**WEATHER DATA SOURCES:** ASOS 128.55 (956) 299-5871.

**COMMUNICATIONS:** CTAF 118.9 ATIS 128.55 UNICOM 122.95

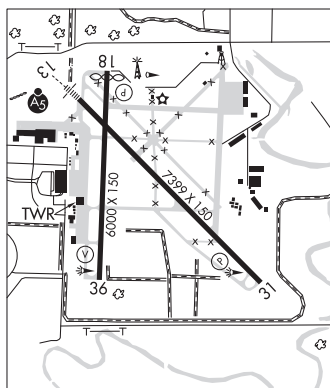
RCO 122.3 (SAN ANGELO RADIO)

Ⓡ VALLEY APP/DEP CON 119.5

TOWER 118.9 (1200-0600Z†) GND CON 121.9

**CLEARANCE DELIVERY PHONE:** For CD when ATCT is clsd ctc crp Apmh at 361-299-4230.

**AIRSPACE:** CLASS D svc 1200-0600Z†; other times CLASS E.



BROWNSVILLE

H-7C, L-20H, 21A

IAP, AD

CONTINUED ON NEXT PAGE

CONTINUED FROM PRECEDING PAGE

**RADIO AIDS TO NAVIGATION:** NOTAM FILE BRO.

(H) (H) VORTACW 116.3 BRO Chan 110 N25°55.44' W97°22.52' 240° 2.9 NM to fld. 10/9E.

TACAN AZIMUTH unusable:

360°-290° byd 24 NM

DME unusable:

360°-290° byd 24 NM

VOR unusable:

271°-290° byd 20 NM

320°-335°

360°-270° byd 24 NM

DEPOO NDB (LOMW) 393 BR N25°59.02' W97°30.55' 133° 6.5 NM to fld. 29/3E.

ILS/DME 110.3 I-BRO Chan 40 Rwy 13. Class IE. LOM DEPOO NDB. Unmonitored when ATCT closed.

**BROWNWOOD RGNL** (BWD)(KBWD) 5 N UTC-6(-5DT) N31°47.62' W98°57.39'

SAN ANTONIO

1387 B NOTAM FILE BWD MON Airport

H-6H, L-19C

RWY 17-35: H5599X100 (ASPH) S-30 MIRL 0.3% up N

IAP

RWY 17: MALS. PAPI(P4L)—GA 3.0° TCH 55'. Trees.

RWY 35: PAPI(P4L)—GA 3.0° TCH 48'. Trees.

RWY 13-31: H4608X101 (ASPH) S-25 MIRL

RWY 31: Trees.

**SERVICE:** S4 FUEL 100LL, JET A LGT ACTVT MALS Rwy 17; MIRL Rwy 13-31 and Rwy 17-35—CTAF.

**AIRPORT REMARKS:** Attended Mon-Fri 1300-2300Z, Sat-Sun 1300-2100Z. 100LL fuel 24 hrs self svc. For fuel svc when unatndd call 325-643-1482. Airframe repairs 325-643-1482.

**AIRPORT MANAGER:** 325-643-1482

**WEATHER DATA SOURCES:** AWOS-3 118.325 (888) 297-9399.

**COMMUNICATIONS:** CTAF/UNICOM 122.8

RCO 122.5 (FORT WORTH RADIO)

® FORT WORTH CENTER APP/DEP CON 127.45

**CLEARANCE DELIVERY PHONE:** For CD if una to ctc on FSS freq, ctc Fort Worth ARTCC at 817-858-7584.

**RADIO AIDS TO NAVIGATION:** NOTAM FILE BWD.

(VL) (L) VOR/DME 113.55 BWD Chan 82(Y) N31°53.55' W98°57.45' 172° 5.9 NM to fld. 1574/8E.

VOR unusable:

010°-084° byd 40 NM

050°-080° byd 35 NM blo 5,500'

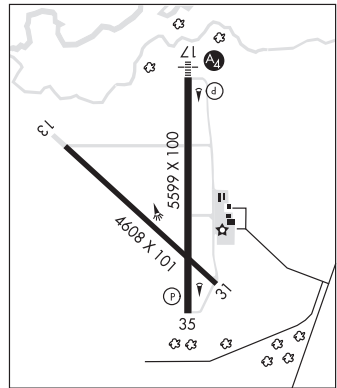
085°-099° byd 40 NM blo 5,000'

085°-099° byd 49 NM

DME unusable:

050°-080° byd 35 NM blo 5,500'

LOC 109.1 I-BWD Rwy 17. LOC unmonitored.



**BRUCE FLD** (See BALLINGER on page 257)