

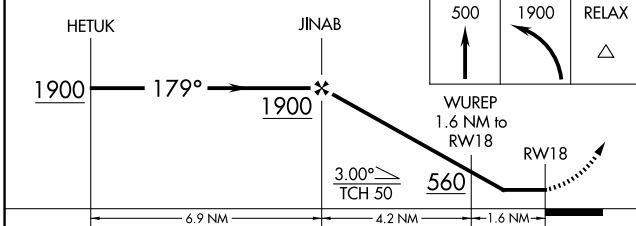
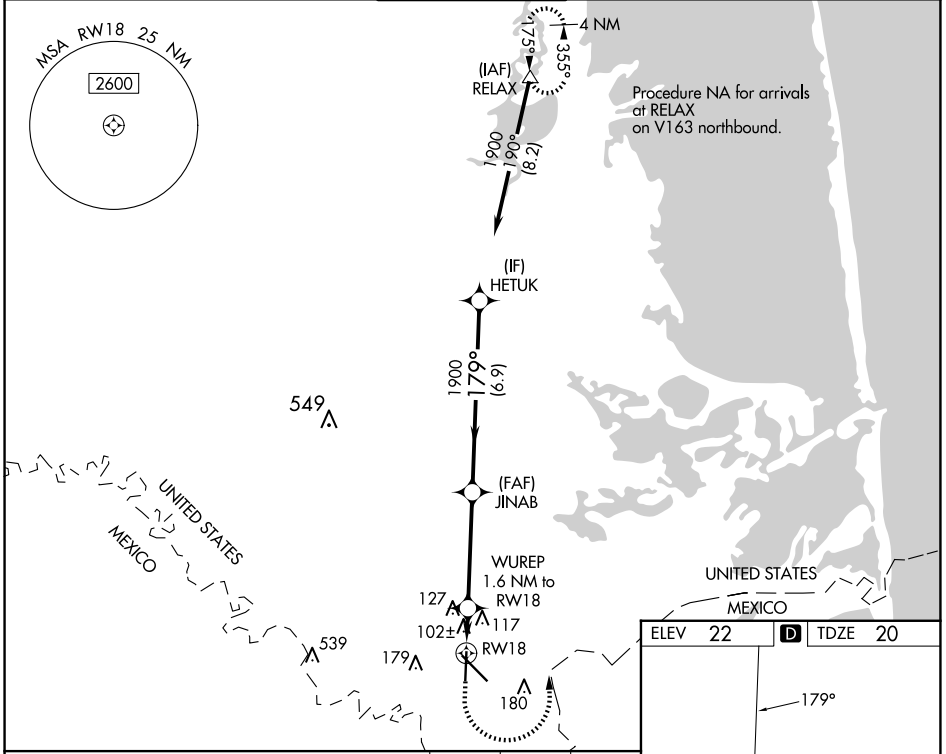
WAAS CH <b>93739</b> <b>W18A</b>	APP CRS <b>179°</b>	Rwy Idg <b>5810</b> TDZE <b>20</b> Apt Elev <b>22</b>
--	------------------------	---

# RNAV (GPS) RWY 18

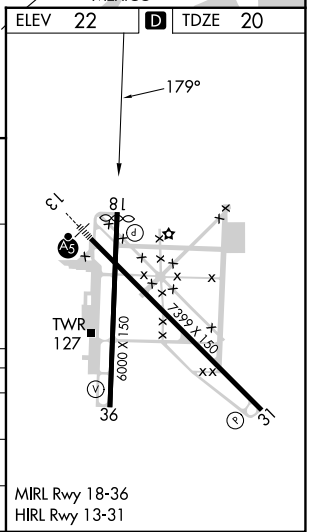
BROWNSVILLE/SOUTH PADRE ISLAND INTL (BRO)

RNP APCH. RADAR required.	MISSED APPROACH: Climb to 500 then climbing left turn to 1900 direct RELAX and hold.
<p>⚠ Rwy 18 helicopter visibility reduction below <math>\frac{3}{4}</math> SM NA. When local altimeter not received, use Port Isabel altimeter setting and increase all MDA 40 feet; increase LNAV Cats C and D visibility <math>\frac{1}{8}</math> mile and Circling Cat D <math>\frac{1}{4}</math> mile.</p>	

ATIS <b>128.55</b>	VALLEY APP CON <b>119.5 257.6</b>	BROWNSVILLE TOWER * <b>118.9 (CTAF) 239.3</b>	GND CON <b>121.9</b>	UNICOM <b>122.95</b>
-----------------------	--------------------------------------	--	-------------------------	-------------------------



CATEGORY	A	B	C	D
LP MDA		360-1	340 (400-1)	
LNAV MDA		380-1	360 (400-1)	
CIRCLING	440-1 418 (500-1)	540-1 518 (600-1)	540-1½ 518 (600-1½)	680-2 658 (700-2)



SC-3, 17 APR 2025 to 15 MAY 2025

SC-3, 17 APR 2025 to 15 MAY 2025