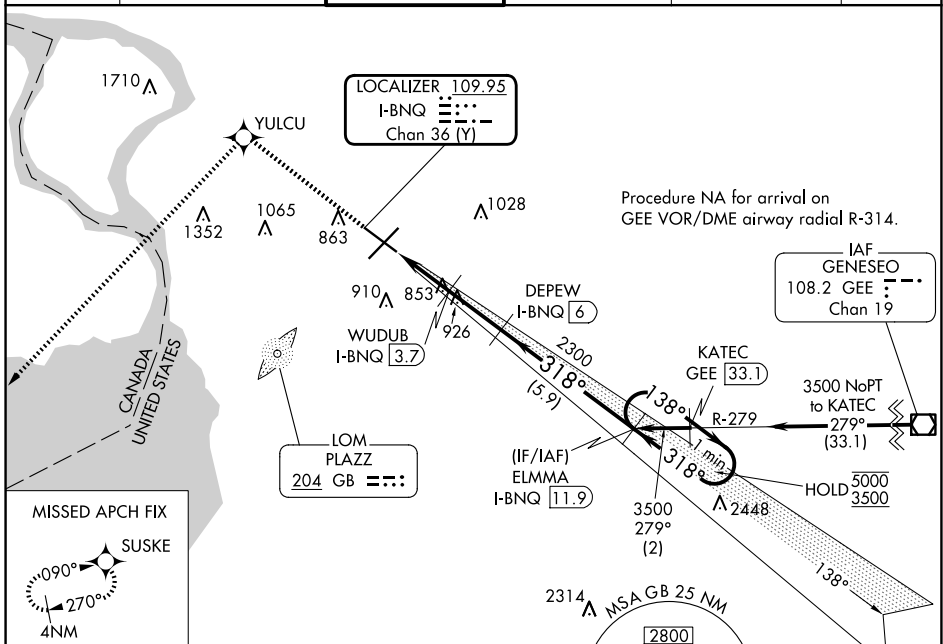


LOC/DME I-BNQ <b>109.95</b> Chan <b>36 (Y)</b>	APP CRS <b>318°</b>	Rwy Idg TDZE Apt Elev <b>6121</b> <b>713</b> <b>727</b>
--	------------------------	--

# ILS or LOC RWY 32

BUFFALO NIAGARA INTL (BUF)

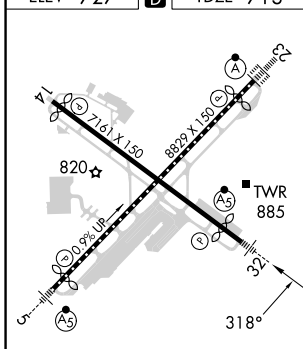
DME required. RNP APCH-GPS.		MALS R	MISSED APPROACH: Climb to 3000 direct YULCU and on track 235° to SUSKE and hold.		
D-ATIS <b>135.35</b>	BUFFALO APP CON <b>126.15 263.125</b>	BUFFALO TOWER <b>120.5 257.8</b>	GND CON <b>133.2 257.8</b>	CLNC DEL <b>124.7 257.8</b>	CPDLC



NE-2, 17 APR 2025 to 15 MAY 2025

NE-2, 17 APR 2025 to 15 MAY 2025

ELEV 727	<b>D</b>	TDZE 713
----------	----------	----------



3000	YULCU	tr 235°	SUSKE	DEPEW I-BNQ 6	ELMMA I-BNQ 11.9	One Minute Holding Pattern
				2300	1540	5000/3500
				1.2	2.3	3.7
				1.1 NM	1.4 NM	2.3 NM
CATEGORY	A		B		C	
S-ILS 32	913-1/2		200 (200-1/2)			
S-LOC 32	1120-1/2 407 (400-1/2)		1120-3/4 407 (400-3/4)			
<b>C</b> CIRCLING	1200-1 473 (500-1)		1220-1 1/2 493 (500-1 1/2)		1340-2 613 (700-2)	

GS 3.00° TCH 54