

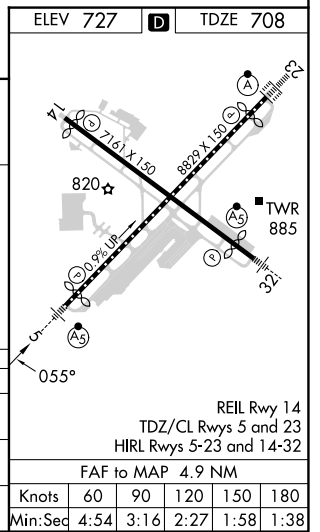
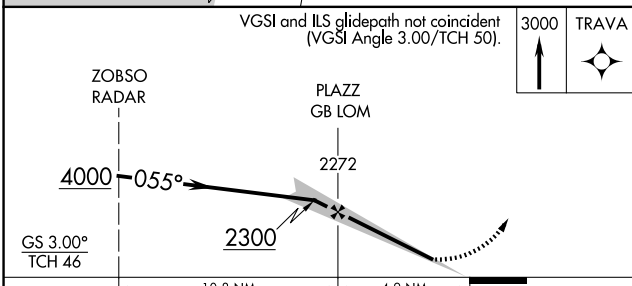
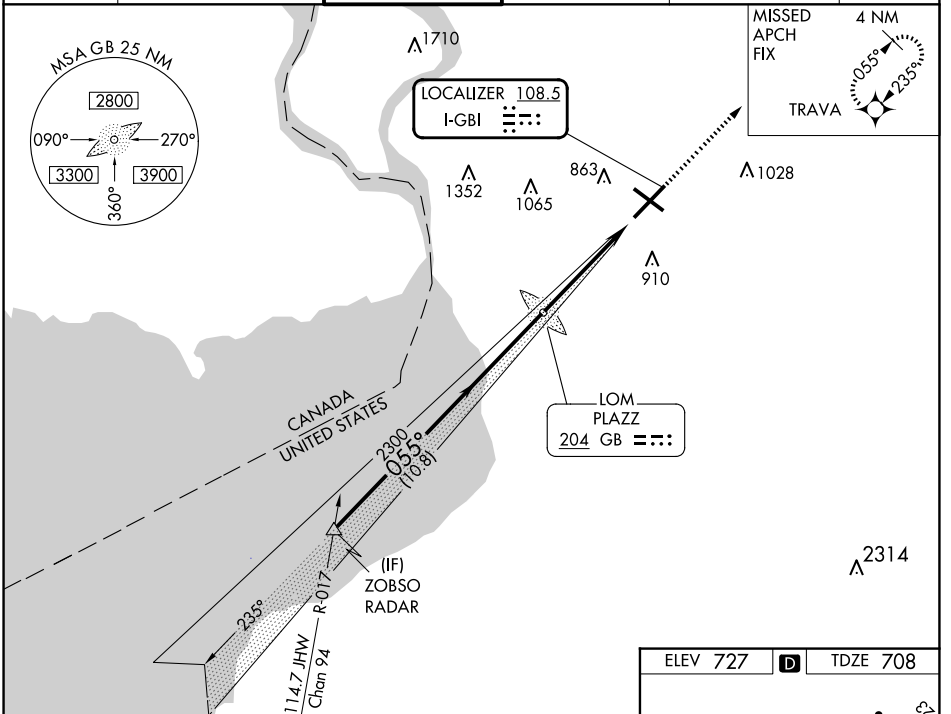
LOC I-GBI <b>108.5</b>	APP CRS <b>055°</b>	Rwy Idg TDZE Apt Elev	<b>7569</b> <b>708</b> <b>727</b>
---------------------------	------------------------	-----------------------------	---

# ILS or LOC RWY 5

BUFFALO NIAGARA INTL (BUF)

RADAR required for procedure entry. RNP APCH - GPS. ADF required for LOC only.		MALSR	MISSED APPROACH: Climb to 3000 direct TRAVA and hold.
Autopilot coupled approach NA. For inop ALS, increase S-LOC 5 Cats C and D visibility to RVR 5500.			

D-ATIS <b>135.35</b>	BUFFALO APP CON <b>126.15 263.125</b>	BUFFALO TOWER <b>120.5 257.8</b>	GND CON <b>133.2 257.8</b>	CLNC DEL <b>124.7 257.8</b>	CPDLC
-------------------------	--	-------------------------------------	-------------------------------	--------------------------------	-------



CATEGORY	A	B	C	D
S-ILS 5	908/18 200 (200-½)			
S-LOC 5	1060/24 352 (400-½)	1060/30 352 (400-¾)		
CIRCLING	1200-1 473 (500-1)	1220-1½ 493 (500-1½)	1340-2 613 (700-2)	

NE-2, 17 APR 2025 to 15 MAY 2025

NE-2, 17 APR 2025 to 15 MAY 2025