

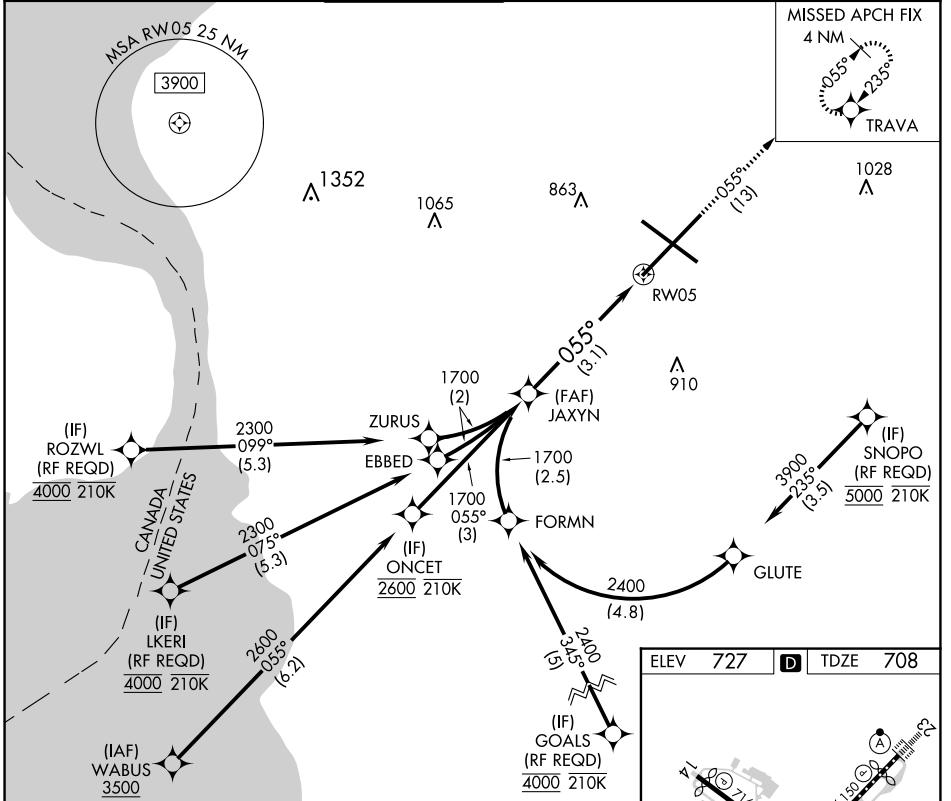
APP CRS	Rwy Idg	7569
055°	TDZE	708
	Apt Elev	727

RNAV (RNP) Z RWY 5

BUFFALO NIAGARA INTL (BUF)

⚠ For uncompensated Baro-VNAV systems, procedure NA below -18°C (0°F) or above 54°C (130°F). GPS required. For inoperative MALS, increase RNP 0.10 all Cats visibility to 1¼. For inoperative MALS, increase RNP 0.30 all Cats visibility to 1%. **MALS** MISSED APPROACH: Climb to 3000 on the RNAV missed approach route to TRAVA and hold.

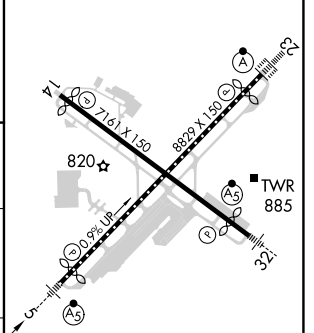
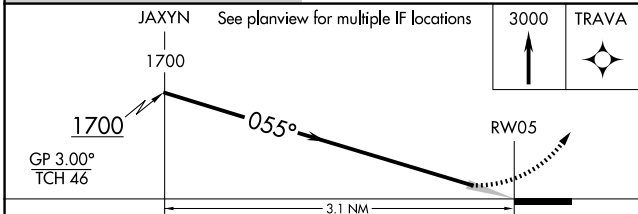
D-ATIS	BUFFALO APP CON	BUFFALO TOWER	GND CON	CLNC DEL	CPDLC
135.35	126.15 263.125	120.5 257.8	133.2 257.8	124.7 257.8	



NE-2, 17 APR 2025 to 15 MAY 2025

NE-2, 17 APR 2025 to 15 MAY 2025

ELEV	727	D	TDZE	708
------	------------	----------	------	------------



CATEGORY	A	B	C	D
RNP 0.10 DA		1065/45	357 (400-¾)	
RNP 0.30 DA		1159/60	451 (500-1¼)	

AUTHORIZATION REQUIRED

REIL Rwy 14
TDZ/CL Rwys 5 and 23
HIRL Rwys 5-23 and 14-32