

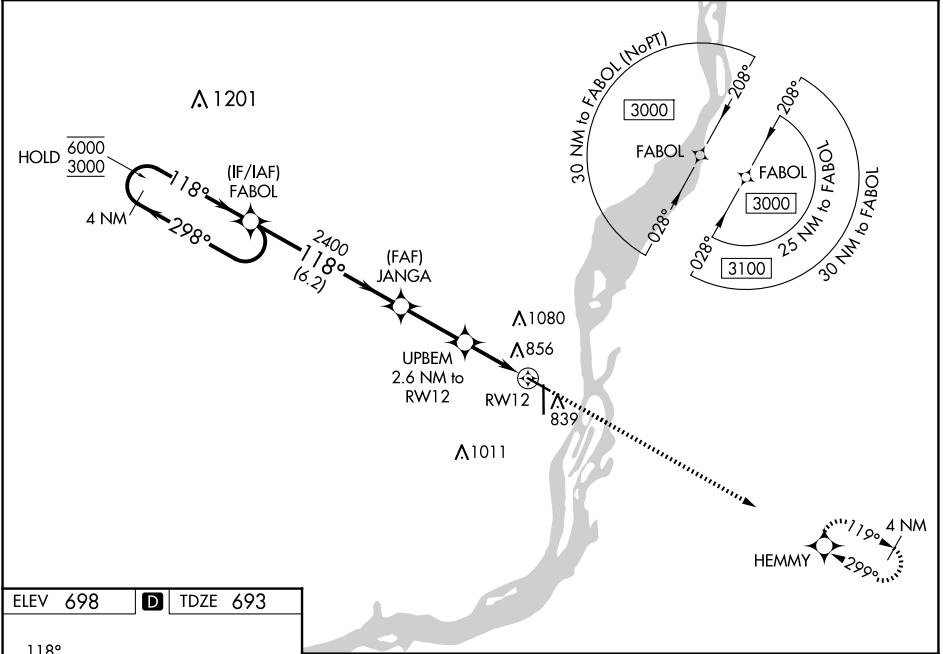
WAAS CH 48834 W12A	APP CRS 118°	Rwy Idg TDZE 693 Apt Elev 698	5350
--	------------------------	---	-------------

RNAV (GPS) RWY 12

SOUTHEAST IOWA RGNL (B.R.L.)

RNP APCH.	MISSED APPROACH: Climb to 3000 direct HEMMY and hold.
For uncompensated Baro-VNAV systems, procedure NA below -21°C or above 54°C.	

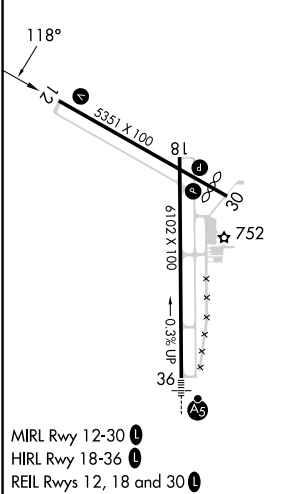
ASOS 118.025	CHICAGO CENTER 135.6 370.95	UNICOM 123.0 (CTAF) 0
------------------------	---------------------------------------	---------------------------------



NC-3, 17 APR 2025 to 15 MAY 2025

NC-3, 17 APR 2025 to 15 MAY 2025

ELEV 698	D	TDZE 693
----------	----------	----------



	4 NM Holding Pattern	FABOL	JANGA	UPBEM 2.6 NM to RWY 12	HEMMY
	6000 ← 298°	2400	2400	2400	3000
	3000 → 118°	118°	118°	118°	HEMMY
	GP 3.00° TCH 39	2400	*1540	*1.2 NM to RWY 12	*LNAV only
		6.2 NM	2.6 NM	1.4	1.2
CATEGORY	A	B	C	D	
LPV DA	943-1 250 (300-1)				NA
LNAV/VNAV DA	1017-1½ 324 (400-1½)				NA
LNAV MDA	1120-1 427 (500-1)		1120-1¼ 427 (500-1¼)		NA
C CIRCLING	1180-1 482 (500-1)		1380-2 682 (700-2)		NA