

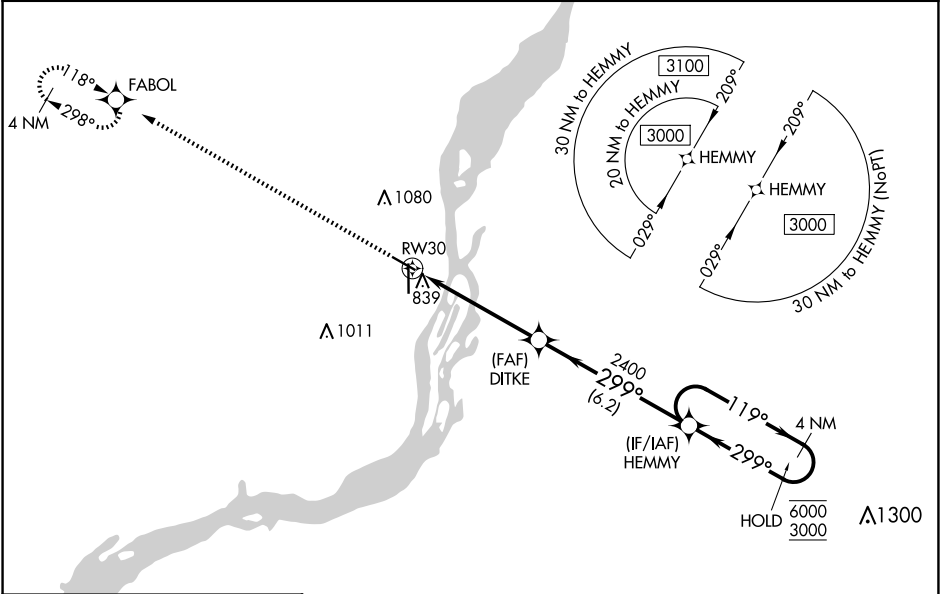
WAAS CH 45535 W30A	APP CRS 299°	Rwy Idg 4850 TDZE 697 Apt Elev 698
--	------------------------	---

RNAV (GPS) RWY 30

SOUTHEAST IOWA RGNL (B.R.L.)

RNP APCH.	MISSED APPROACH: Climb to 3000 direct FABOL and hold.
<p>⚠ Rwy 30 helicopter visibility reduction below $\frac{3}{4}$ SM NA. For uncompensated Baro-VNAV systems, procedure NA below -21°C or above 54°C.</p>	

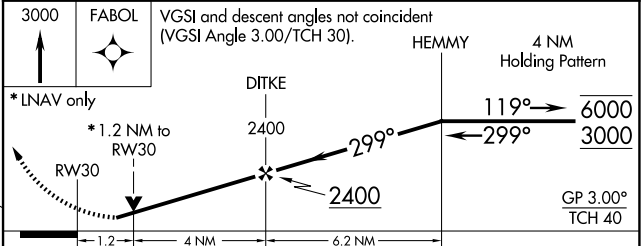
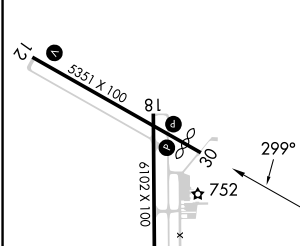
ASOS 118.025	CHICAGO CENTER 135.6 370.95	UNICOM 123.0 (CTAF)
------------------------	---------------------------------------	-------------------------------



NC-3, 17 APR 2025 to 15 MAY 2025

NC-3, 17 APR 2025 to 15 MAY 2025

ELEV 698	D	TDZE 697
----------	----------	----------



CATEGORY	A	B	C	D
LPV DA		995-1 298 (300-1)		NA
LNAV/VNAV DA		989-1 292 (300-1)		NA
LNAV MDA	1100-1 403 (500-1)		1100-1 $\frac{1}{8}$ 403 (500-1 $\frac{1}{8}$)	NA
C CIRCLING	1180-1 482 (500-1)		1380-2 682 (800-2)	NA

MIRL Rwy 12-30 **Ⓛ**
 HIRL Rwy 18-36 **Ⓛ**
 REIL Rwy 12, 18 and 30 **Ⓛ**