

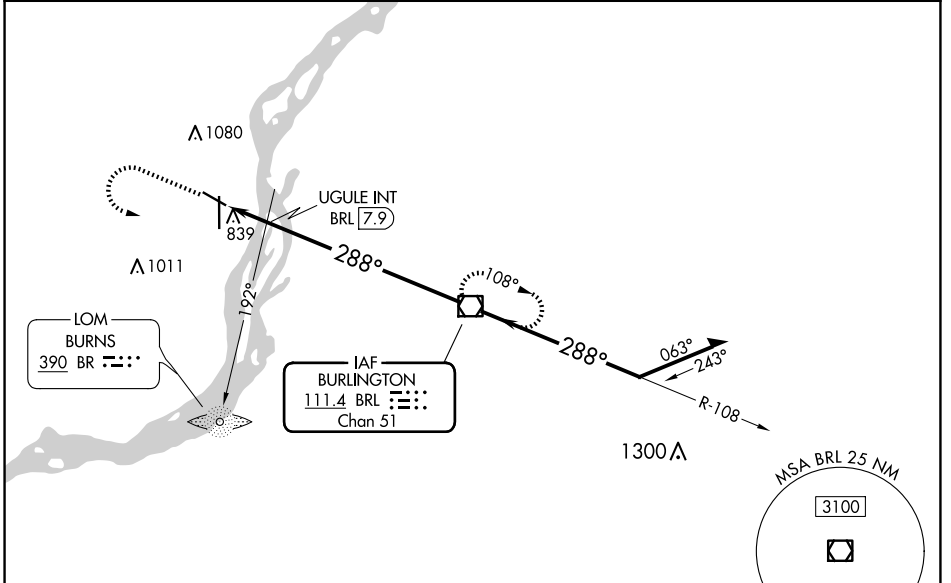
VOR/DME BRL	APP CRS	Rwy Idg	4850
111.4	288°	TDZE	697
Chan 51		Apt Elev	698

VOR RWY 30
SOUTHEAST IOWA RGNL (B.R.L.)

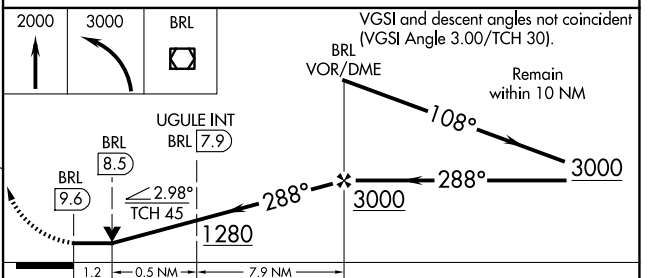
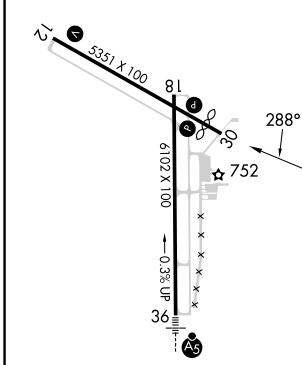
⚠ Rwy 30 helicopter visibility reduction below 3/4 SM NA.

MISSED APPROACH: Climb to 2000 then climbing left turn to 3000 direct BRL VOR/DME and hold.

ASOS 118.025	CHICAGO CENTER 135.6 370.95	UNICOM 123.0 (CTAF) 📻
-----------------	--------------------------------	---------------------------------



ELEV 698	D	TDZE 697
----------	----------	----------



CATEGORY	A		B		C		D	
	S-30	1280-1	583 (600-1)	1280-1 3/4	583 (600-1 3/4)	1380-2	682 (700-2)	NA
C CIRCLING	1280-1	582 (600-1)	1380-2	682 (700-2)	NA	NA	NA	NA
UGULE FIX MINIMUMS								
S-30	1100-1	403 (500-1)	1100-1 1/8	403 (500-1 1/8)	1380-2	682 (700-2)	NA	NA
C CIRCLING	1180-1	482 (500-1)	1380-2	682 (700-2)	NA	NA	NA	NA

MIRL Rwy 12-30 **📻**
HIRL Rwy 18-36 **📻**
REIL Rwys 12, 18 and 30 **📻**

FAF to MAP 9.6 NM

Knots	60	90	120	150	180
Min:Sec	9:36	6:24	4:48	3:50	3:12

NC-3, 17 APR 2025 to 15 MAY 2025

NC-3, 17 APR 2025 to 15 MAY 2025