

BAGGY THREE ARRIVAL (RNAV)

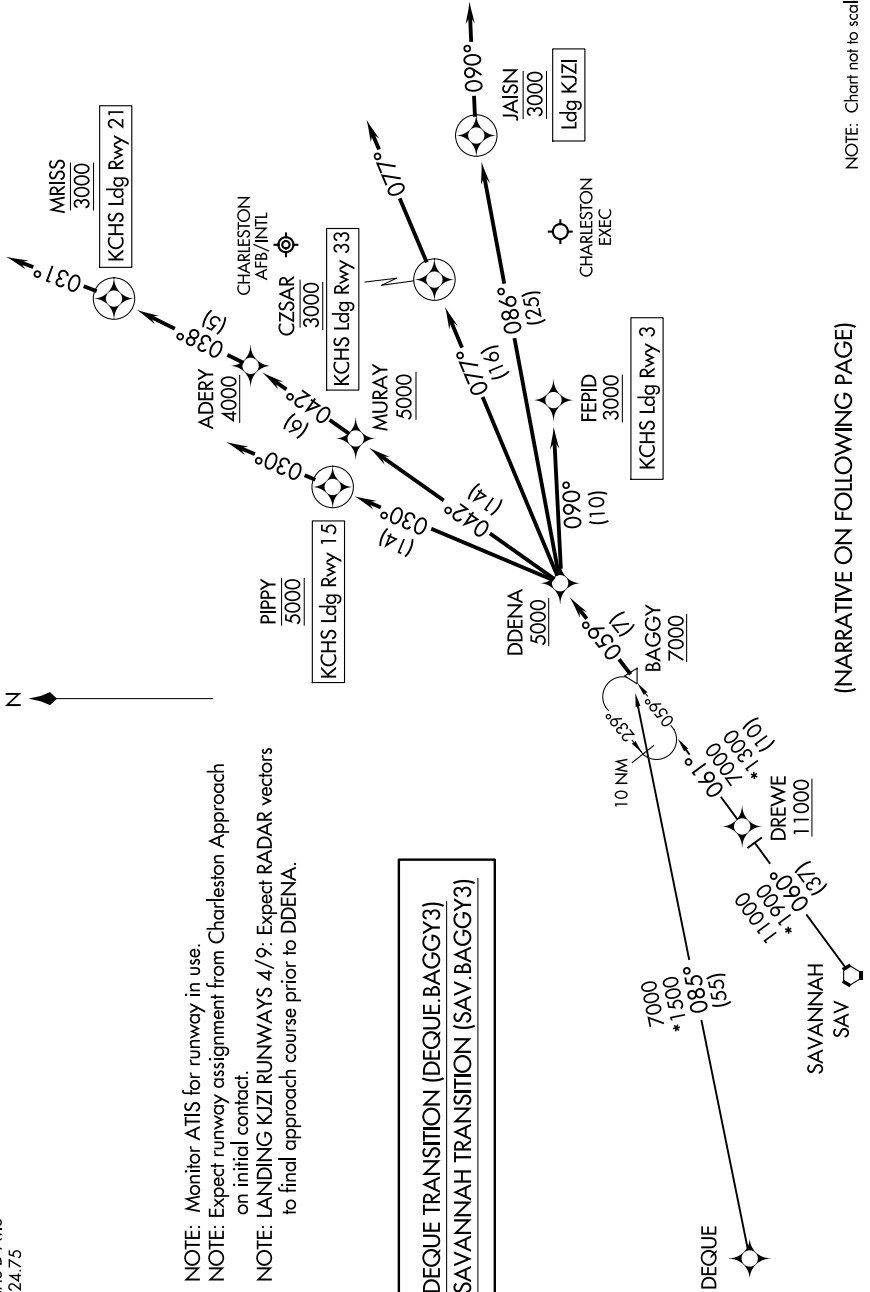
CHARLESTON, SOUTH CAROLINA

SE-2, 17 APR 2025 to 15 MAY 2025

CHARLESTON APP CON
120.7 306.925
CHS D-ATIS
124.75

NOTE: Monitor ATIS for runway in use.
NOTE: Expect runway assignment from Charleston Approach on initial contact.
NOTE: LANDING KJI RUNWAYS 4/9: Expect RADAR vectors to final approach course prior to DDENA.

RNAV 1 - DME/DME/IRU or GPS.
RADAR required.



DEQUE TRANSITION (DEQUE.BAGGY3)
SAVANNAH TRANSITION (SAV.BAGGY3)

BAGGY THREE ARRIVAL (RNAV)

CHARLESTON, SOUTH CAROLINA

(NARRATIVE ON FOLLOWING PAGE)

NOTE: Chart not to scale.

SE-2, 17 APR 2025 to 15 MAY 2025