

WAAS CH 82529 W03A	APP CRS 026°	Rwy Idg TDZE Apt Elev	5465 1503 1503
---------------------------------	------------------------	-----------------------------	---

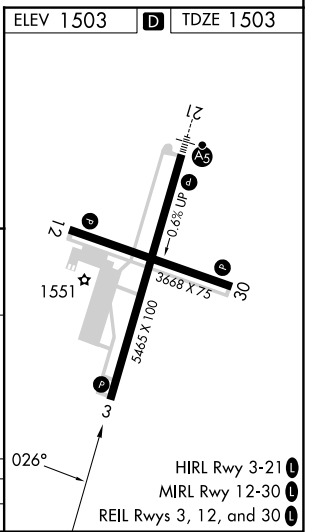
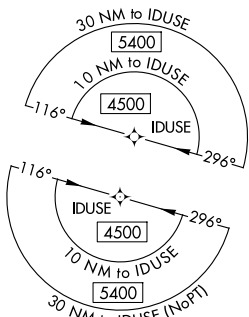
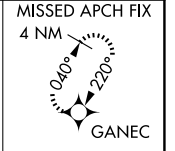
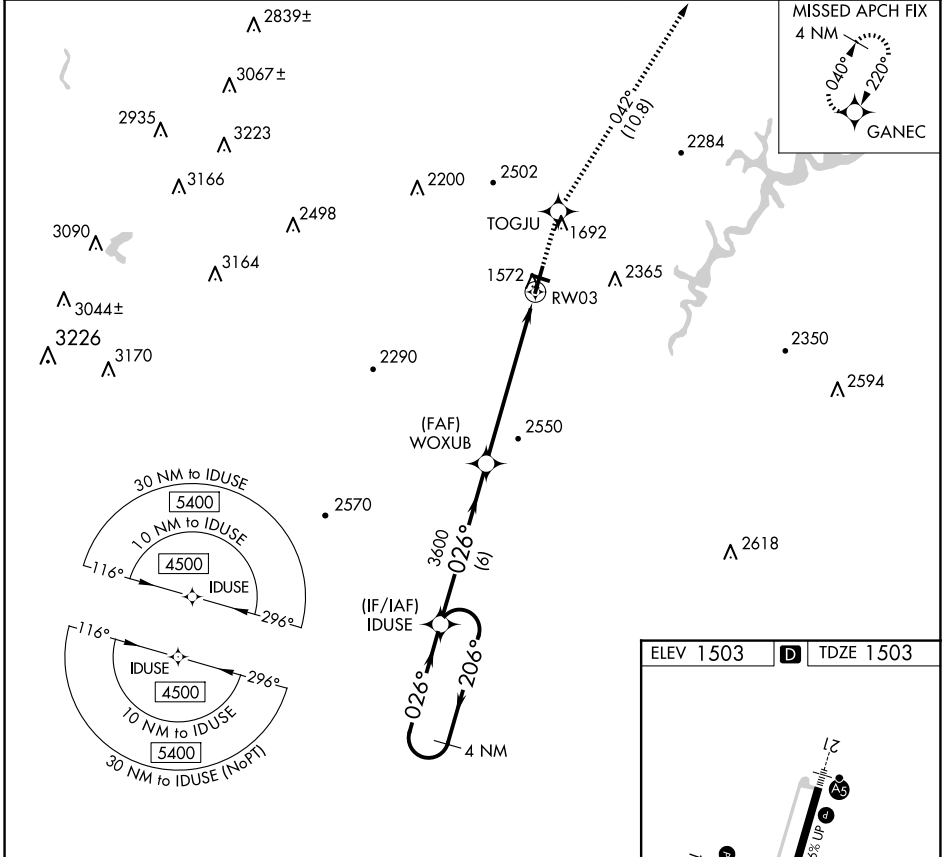
RNAV (GPS) Z RWY 3

ALTOONA/BLAIR COUNTY (A00)

⚠ Rwy 3 helicopter visibility reduction below 3/4 SM NA. DME/DME RNP-0.3 NA. When local altimeter setting not received, use Bedford County altimeter setting and increase all DA 84 feet, and increase all visibilities 3/8 mile.

MISSED APPROACH: Climb to 5000 direct TOGJU and on track 042° to GANEC and hold, continue climb-in-hold to 5000.

ASOS 127.125	JOHNSTOWN APP CON ★ 121.2 299.2	CTAF 123.60
------------------------	---	-----------------------



4 NM Holding Pattern		IDUSE	5000	TOGJU	tr 042°	GANEC
4500	← 206°	→ 026°				
GP 3.00°						
TCH 55						
		6 NM		6.4 NM		
CATEGORY	A	B	C	D		
LPV DA		1828-1	325 (400-1)			

NE-4, 17 APR 2025 to 15 MAY 2025

NE-4, 17 APR 2025 to 15 MAY 2025

HIRL Rwy 3-21
MIRL Rwy 12-30
REIL Rws 3, 12, and 30