

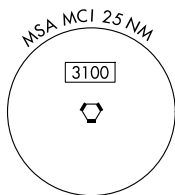
(CHIEF9.MCI) 25107  
**CHIEF NINE DEPARTURE**

KANSAS CITY DOWNTOWN/WHEELER FLD (MCK)  
 AL-213 (FAA) KANSAS CITY, MISSOURI

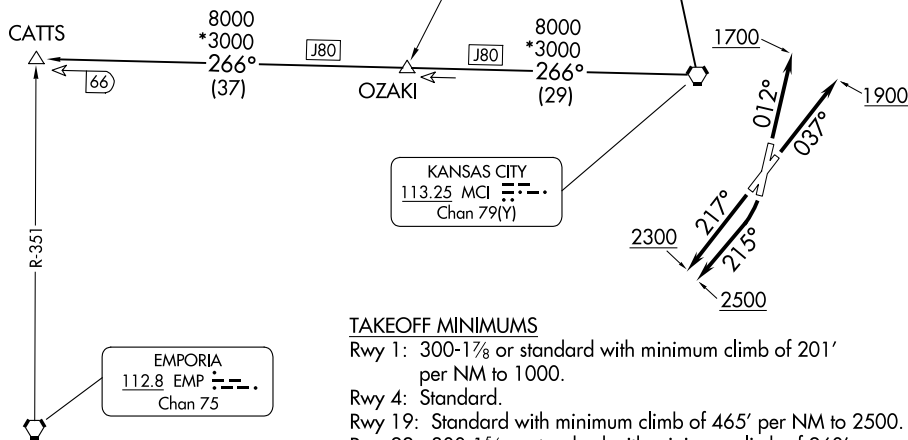
**TOP ALTITUDE:  
 10000**

**RADAR required.**

KANSAS CITY DEP CON  
 118.4 307.35  
 ATIS  
 120.75  
 CLNC DEL  
 121.9



ST. JOSEPH  
 115.5 STJ  
 Chan 102



**TAKEOFF MINIMUMS**

- Rwy 1: 300-1 $\frac{3}{8}$  or standard with minimum climb of 201' per NM to 1000.
- Rwy 4: Standard.
- Rwy 19: Standard with minimum climb of 465' per NM to 2500.
- Rwy 22: 300-1 $\frac{3}{8}$  or standard with minimum climb of 260' per NM to 1000.

NOTE: Chart not to scale.

**DEPARTURE ROUTE DESCRIPTION**

- TAKEOFF RUNWAY 1: Climb on heading 012° to 1700, thence. . . .
  - TAKEOFF RUNWAY 4: Climb on heading 037° to 1900, thence. . . .
  - TAKEOFF RUNWAY 19: Climbing right turn heading 215° to 2500, thence. . . .
  - TAKEOFF RUNWAY 22: Climb on heading 217° to 2300, thence. . . .
- . . . climb on assigned heading for RADAR vectors to appropriate route. Maintain 10000 or as assigned by ATC, expect filed altitude 10 minutes after departure.

CATTs TRANSITION (CHIEF9.CATTs): From over MCI VORTAC on MCI R-266 to CATTs.

ST. JOSEPH TRANSITION (CHIEF9.STJ): From over MCI VORTAC on MCI R-343 and STJ R-160 to STJ VORTAC.

**CHIEF NINE DEPARTURE**  
 (CHIEF9.MCI) 05OCT23

KANSAS CITY, MISSOURI  
 KANSAS CITY DOWNTOWN/WHEELER FLD (MCK)

NC-3, 17 APR 2025 to 15 MAY 2025

NC-3, 17 APR 2025 to 15 MAY 2025