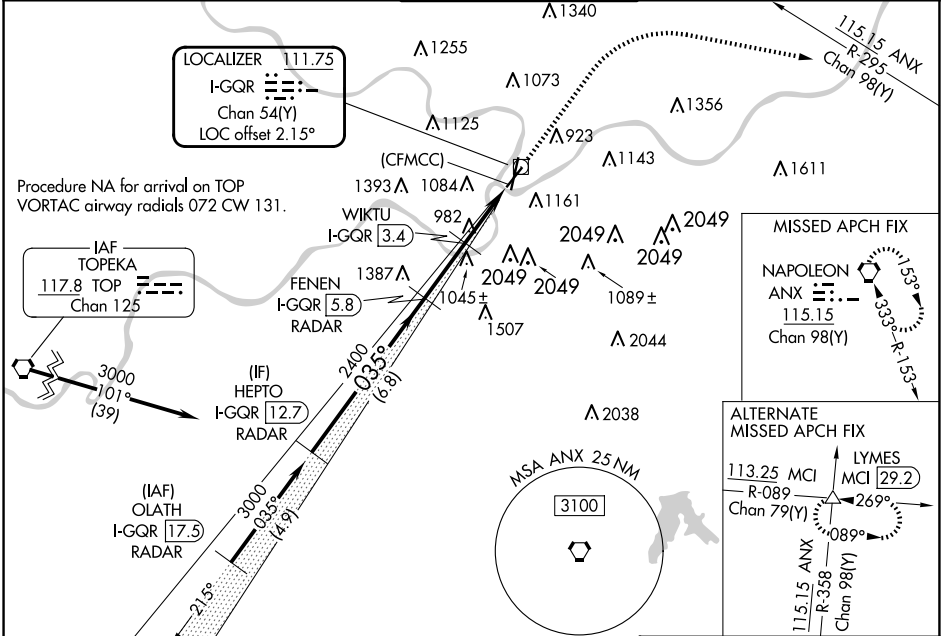


LOC/DME I-GQR 111.75 Chan 54(Y)	APP CRS 035°	Rwy Idg TDZE Apt Elev 4270 744 757
--	------------------------	--

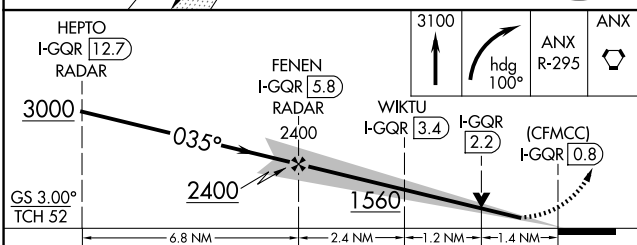
ILS or LOC RWY 4
KANSAS CITY DOWNTOWN/WHEELER FLD (MKC)

DME or RADAR required for procedure entry. DME or RADAR required for LOC only.		MISSED APPROACH: Climb to 3100 then right turn heading 100° and on ANX VORTAC R-295 to ANX VORTAC and HOLD.				
<p>⚠ Circling NA east of Rwy 1-19. Autopilot coupled approach NA below 1013.</p> <p>⚠ Circling NA to Rwy 22. Circling NA for Cat D to Rwy 4. Rwy 4 helicopter visibility reduction below RVR 4000 NA.</p>		ATIS 120.75	KANSAS CITY APP CON 118.4 307.35	DOWNTOWN TOWER 133.3 233.7	CLNC DEL 121.9	GND CON 121.9



NC-3, 17 APR 2025 to 15 MAY 2025

NC-3, 17 APR 2025 to 15 MAY 2025



ELEV 757	TDZE 744
HIRL Rws 4-22 and 1-19 REIL Rws 1 and 22 RLS Rwy 1	
FAF to MAP 5 NM	
Knots	60 90 120 150 180
Min:Sec	5:00 3:20 2:30 2:00 1:40

CATEGORY	A	B	C	D
S-ILS 4	1001/40 257 (300-¾)			NA
S-LOC 4	1560/55 816 (900-1)	1560-1¼ 816 (900-1¼)	1560-2½ 816 (900-2½)	NA
C CIRCLING	1560-1 803 (900-1)	1560-1¼ 803 (900-1¼)	1560-2½	803 (900-2½)
WIKTU FIX MINIMUMS				
S-LOC 4	1240/55	496 (500-1)	1240-1⅜ 496 (500-1⅜)	NA
C CIRCLING	1380-1 623 (700-1)	1400-1 643 (700-1)	1460-2 703 (800-2)	1540-2½ 783 (800-2½)