

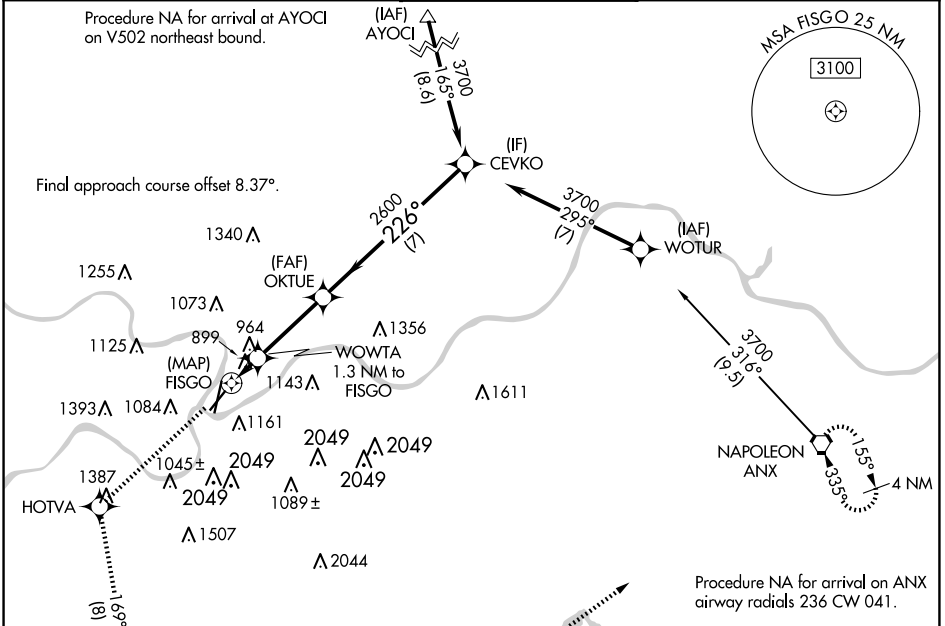
WAAS CH <b>40327</b> <b>W22A</b>	APP CRS <b>226°</b>	Rwy Idg TDZE <b>744</b> Apt Elev <b>757</b>	<b>4351</b> <b>744</b> <b>757</b>
--	------------------------	---	---

# RNAV (GPS) RWY 22

KANSAS CITY DOWNTOWN/WHEELER FLD (MKC)

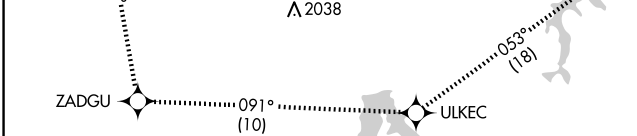
RNP APCH - GPS. ▼ Rwy 22 helicopter visibility reduction below 1 SM NA. Straight-in Rwy 22 at night, operational VGSI required, remain at or above VGSI glidepath until threshold.	MISSED APPROACH: Climb to 3700 direct HOTVA and on track 169° to ZADGU and on track 091° to ULKEC and on track 053° to ANX VORTAC and hold.
---	---

ATIS <b>120.75</b>	KANSAS CITY APP CON <b>118.4 307.35</b>	DOWNTOWN TOWER <b>133.3 233.7</b>	CLNC DEL <b>121.9</b>	GND CON <b>121.9</b>
-----------------------	--	--------------------------------------	--------------------------	-------------------------

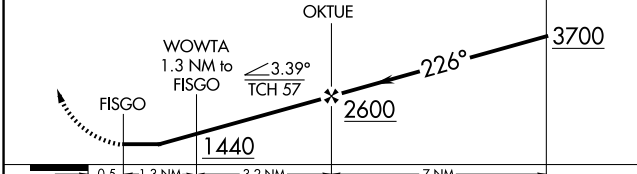


NC-3, 17 APR 2025 to 15 MAY 2025

NC-3, 17 APR 2025 to 15 MAY 2025

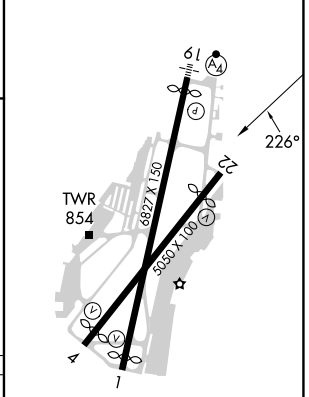


3700 ↑	HOTVA	tr 169°	ZADGU	tr 091°	ULKEC	tr 053°	ANX	CEVKO
--------	-------	---------	-------	---------	-------	---------	-----	-------



CATEGORY	A	B	C	D
LP MDA	1160-1	416 (500-1)	1160-1 <sup>1</sup> / <sub>8</sub> 416 (500-1 <sup>1</sup> / <sub>8</sub> )	NA
LNAV MDA	1260-1	516 (600-1)	1260-1 <sup>3</sup> / <sub>8</sub> 516 (600-1 <sup>3</sup> / <sub>8</sub> )	NA

ELEV 757	D TDZE 744
----------	------------



RLS Rwy 1  
REIL Rws 1 and 22  
HIRL Rws 4-22 and 1-19