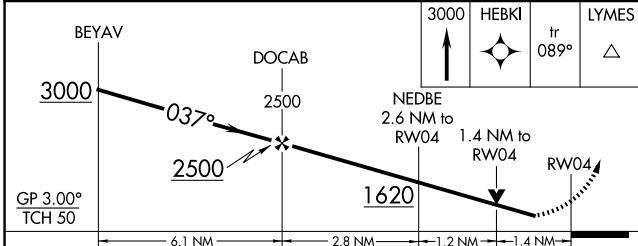
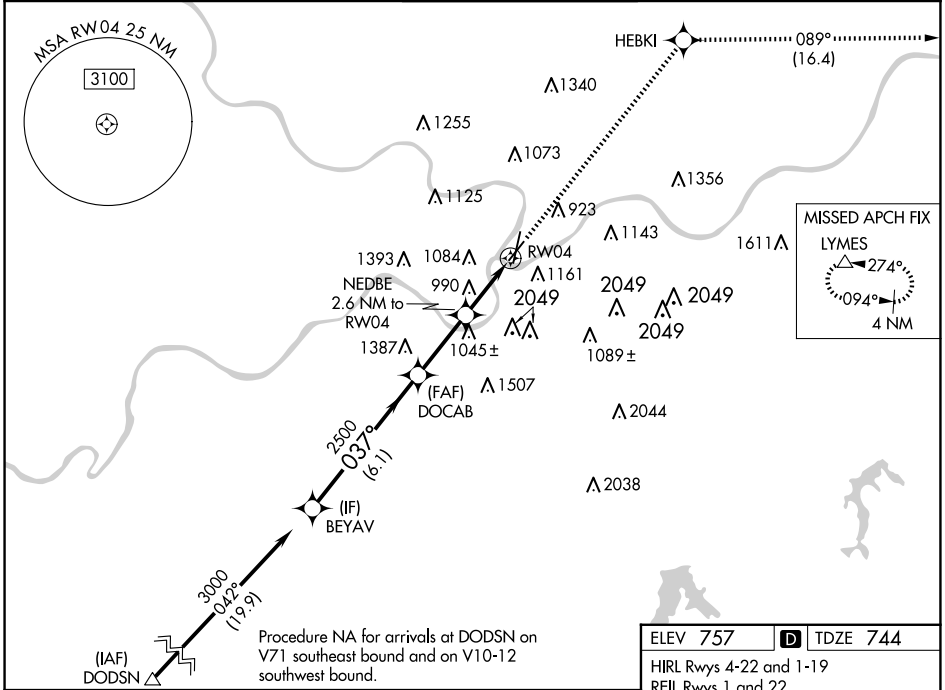


WAAS CH <b>50112</b> <b>W04A</b>	APP CRS <b>037°</b>	Rwy Idg TDZE Apt Elev	<b>4270</b> <b>744</b> <b>757</b>
--	------------------------	-----------------------------	---

# RNAV (GPS) RWY 4

KANSAS CITY DOWNTOWN/WHEELER FLD (MKC)

RNP APCH - GPS.		MISSED APPROACH: Climb to 3000 direct HEBKI and on track 089° to LYMES and hold.		
⚠ Circling NA east of Rwy 1-19. Rwy 4 helicopter visibility reduction below RVR 4000 NA. For uncompensated Baro-VNAV systems, LNAV/VNAV NA below -19°C or above 54°C. Circling NA for Cat D to Rwy 4. Circling NA to Rwy 22.	ATIS <b>120.75</b>	KANSAS CITY APP CON <b>118.4 307.35</b>	DOWNTOWN TOWER <b>133.3 233.7</b>	CLNC DEL <b>121.9</b>
GND CON <b>121.9</b>				



ELEV 757	<b>D</b> TDZE 744
HIRL Rwy 4-22 and 1-19 REIL Rwy 1 and 22 RLS Rwy 1	

CATEGORY	A	B	C	D
LPV DA	999/40	255 (300-¾)		NA
LNAV/VNAV DA	1411-1⅞	667 (700-1⅞)		NA
LNAV MDA	1240/55	496 (500-1)	1240-1⅞ 496 (500-1⅞)	NA
<b>C</b> CIRCLING	1380-1 623 (700-1)	1400-1 643 (700-1)	1460-2 703 (800-2)	1540-2½ 783 (800-2½)

# RNAV (GPS) RWY 4

NC-3, 17 APR 2025 to 15 MAY 2025

NC-3, 17 APR 2025 to 15 MAY 2025