

# ROYAL TWO DEPARTURE

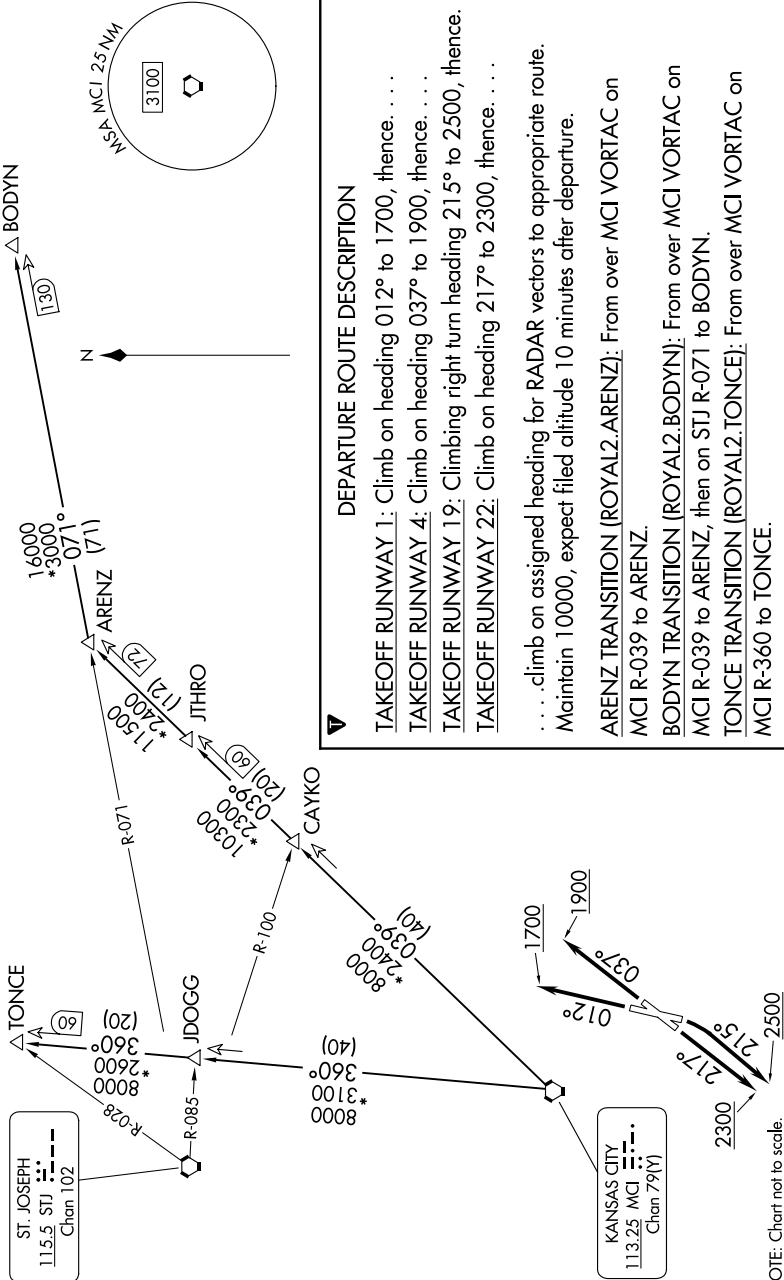
NC-3, 17 APR 2025 to 15 MAY 2025

KANSAS CITY DEP CON  
118.4 307.35  
ATIS  
120.75  
CLNC DEL  
121.9

**TOP ALTITUDE:**  
10000

**TAKEOFF MINIMUMS**  
Rwy 1: 300-1 $\frac{1}{8}$  or standard with minimum climb of 201' per NM to 1000.  
Rwy 4: Standard.  
Rwy 19: Standard with minimum climb of 465'/NM to 2500.  
Rwy 22: 300-1 $\frac{1}{8}$  or standard with minimum climb of 260'/NM to 1000.

**RADAR and DME required.**



## DEPARTURE ROUTE DESCRIPTION

- TAKEOFF RUNWAY 1:** Climb on heading 012° to 1700, thence. . . .
  - TAKEOFF RUNWAY 4:** Climb on heading 037° to 1900, thence. . . .
  - TAKEOFF RUNWAY 19:** Climbing right turn heading 215° to 2500, thence. . . .
  - TAKEOFF RUNWAY 22:** Climb on heading 217° to 2300, thence. . . .
- . . . climb on assigned heading for RADAR vectors to appropriate route.  
Maintain 10000, expect filed altitude 10 minutes after departure.
- ARENZ TRANSITION (ROYAL2.ARENZ):** From over MCI VORTAC on MCI R-039 to ARENZ.  
**BODYN TRANSITION (ROYAL2.BODYN):** From over MCI VORTAC on MCI R-039 to ARENZ, then on STJ R-071 to BODYN.  
**TONCE TRANSITION (ROYAL2.TONCE):** From over MCI VORTAC on MCI R-360 to TONCE.

NOTE: Chart not to scale.

NC-3, 17 APR 2025 to 15 MAY 2025