

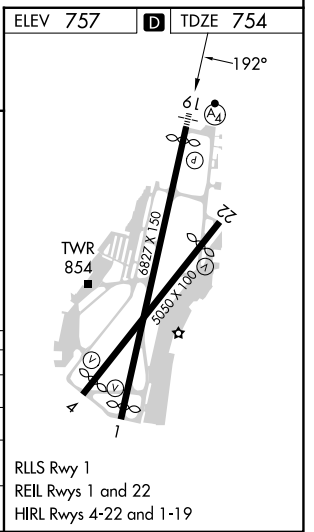
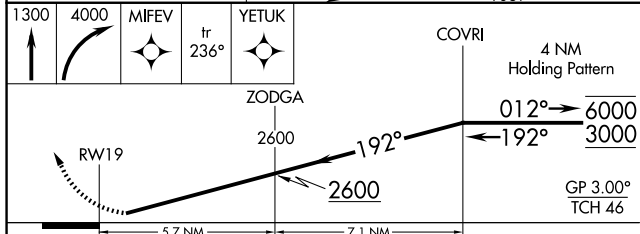
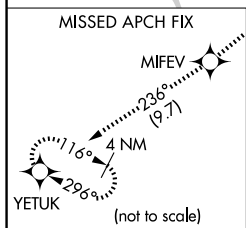
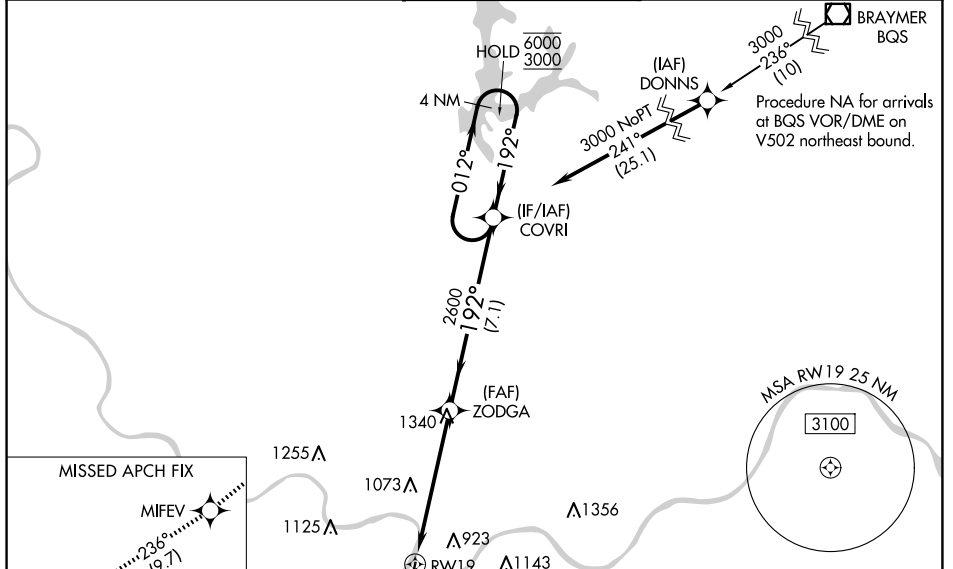
WAAS CH 90320 W19A	APP CRS 192°	Rwy Idg TDZE Apt Elev	6526 754 757
--	------------------------	-----------------------------	---

RNAV (GPS) Z RWY 19

KANSAS CITY DOWNTOWN/WHEELER FLD (MKC)

RNP APCH-GPS. ▼ Rwy 19 helicopter visibility reduction below RVR 4000 NA. Inop table does not apply to LPV* all Cats. For uncompensated Baro-VNAV systems, LNAV/VNAV NA below -19°C or above 54°C. For inop ALS, increase LPV visibility all Cats to RVR 5500.	MALSF A4	MISSED APPROACH: Climb to 1300 then climbing right turn to 4000 direct MIFEV and on track 236° to YETUK and hold. *Missed approach requires minimum climb of 300 feet per NM to 1500. #Missed approach requires minimum climb of 360 feet per NM to 2400.
---	-------------	---

ATIS 120.75	KANSAS CITY APP CON 118.4 307.35	DOWNTOWN TOWER 133.3 233.7	CLNC DEL 121.9	GND CON 121.9
-----------------------	--	--------------------------------------	--------------------------	-------------------------



CATEGORY	A	B	C	D
LPV DA*		1004/40	250 (300-¾)	
LPV DA		1097/40	343 (400-¾)	
LNAV/VNAV DA#		1077/40	323 (400-¾)	
LNAV/VNAV DA		1468-1¾	714 (800-1¾)	

NC-3, 17 APR 2025 to 15 MAY 2025

NC-3, 17 APR 2025 to 15 MAY 2025