

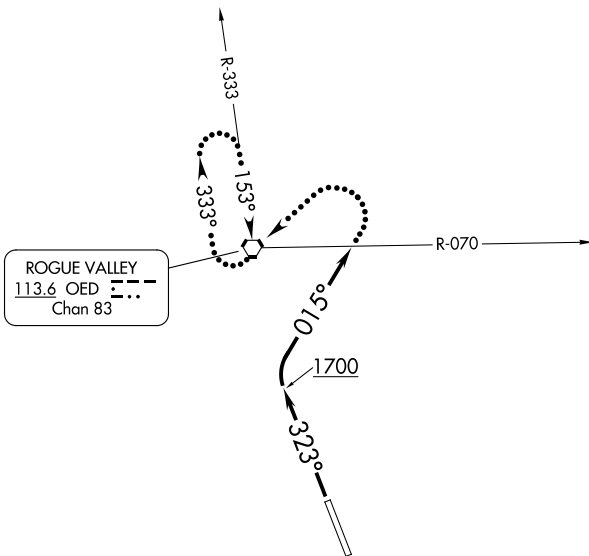
EAGLE SIX DEPARTURE

AL-251 (FAA)

ROGUE VALLEY INTL/MEDFORD (MF'R)
MEDFORD, OREGON

CASCADE DEP CON ★
 124.3 379.9
 ATIS
 127.25
 GND CON
 121.8
 MEDFORD TOWER ★
 119.4 (CTAF) 257.8
 SEATTLE CENTER
 124.85 306.3

**TOP ALTITUDE:
11000**



ROGUE VALLEY
 113.6 OED
 Chan 83

TAKEOFF MINIMUMS

Rwys 14: NA - ATC.

Rwy 32: Standard with minimum climb of 410' per NM to 6300.

NOTE: Chart not to scale.

DEPARTURE ROUTE DESCRIPTION

TAKEOFF RUNWAY 32: Climb to 1700 on heading 323° then climbing right turn heading 015°, maintain 11000 or assigned altitude, expect RADAR vectors to assigned route; expect filed altitude/flight level five minutes after departure.

LOST COMMUNICATIONS: If no contact with ATC crossing the OED R-070, turn left, proceed direct OED VORTAC, continue climb in holding pattern to minimum crossing altitude/minimum enroute altitude before proceeding on course.

NW-1, 17 APR 2025 to 15 MAY 2025

NW-1, 17 APR 2025 to 15 MAY 2025