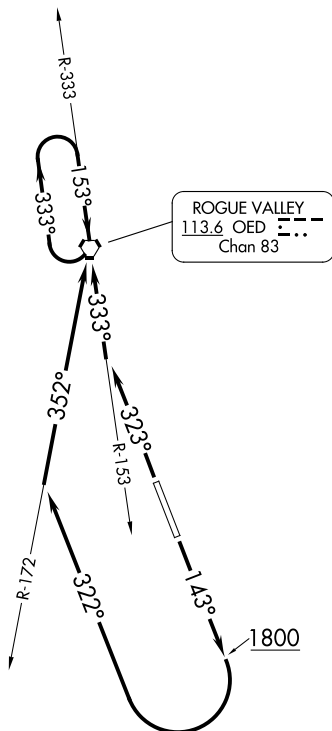


CASCADE DEP CON ★  
124.3 379.9  
ATIS  
127.25  
GND CON  
121.8  
MEDFORD TOWER ★  
119.4 (CTAF) 257.8  
SEATTLE CENTER  
124.85 306.3



### TAKEOFF MINIMUMS

Rwy 14: Standard with a minimum climb of 435' per NM to 4700.  
Rwy 32: Standard with a minimum climb of 300' per NM to 6800.

NOTE: Chart not to scale.



### DEPARTURE ROUTE DESCRIPTION

TAKEOFF RUNWAY 14: Climb on heading 143° to 1800, then climbing right turn heading 322° and OED VORTAC R-172 to OED VORTAC, thence. . . .

TAKEOFF RUNWAY 32: Climb on heading 323° to intercept the OED VORTAC R-153 to OED VORTAC, thence. . . .

. . . . continue climb-in-hold in OED VORTAC holding pattern to cross OED VORTAC at or above MEA/MCA for direction of flight before proceeding on course.