

APP CRS 143°	Rwy Idg 8800
TDZE 1303	Apt Elev 1335

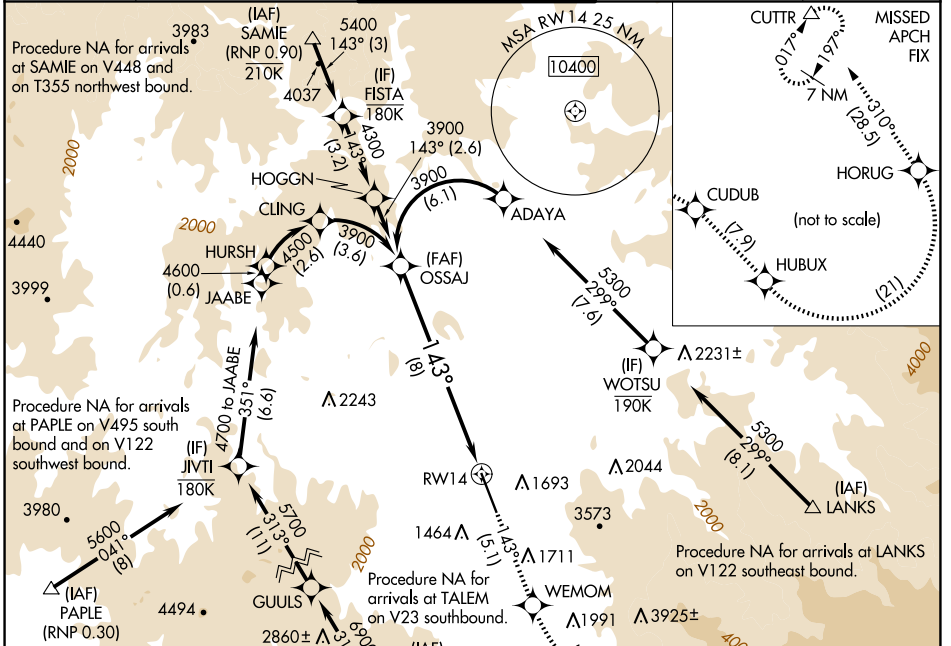
RNAV (RNP) Z RWY 14

ROGUE VALLEY INTL/MEDFORD (MFR)

RNP AR APCH-GPS.
 For uncompensated Baro-VNAV systems, procedure NA below -6°C or above 54°C. For inop ALS, increase RNP 0.30 all Cnts visibility to 2 SM.

MALSRS
 MISSED APPROACH: Climb to 9000 on track 143° to WEMOM, left turn to CUDUB, right turn HUBUX, left turn HORUG, then on track 310° to CUTTR and hold. * Missed approach requires minimum climb of 244 feet per NM to 5000.

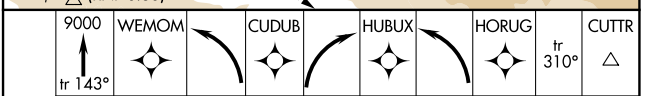
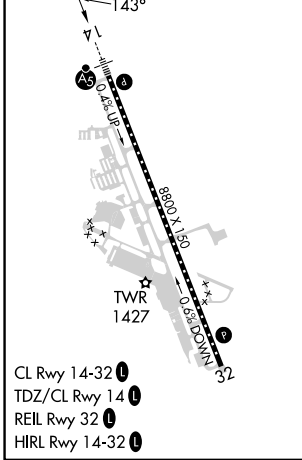
ATIS 127.25	CASCADE APP CON * 124.3 379.9	MEDFORD TOWER * 119.4 (CTAF) 257.8	GND CON 121.8	UNICOM 122.95
-----------------------	---	--	-------------------------	-------------------------



NW-1, 17 APR 2025 to 15 MAY 2025

NW-1, 17 APR 2025 to 15 MAY 2025

ELEV 1335	TDZE 1303
------------------	------------------



OSSAJ

3900

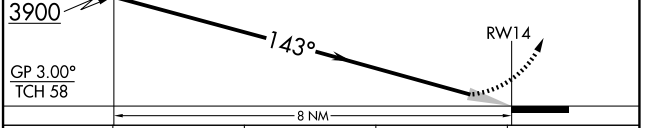
3900

GP 3.00°

TCH 58

VGS1 and RNAV glidepath not coincident (VGS1 Angle 3.00/TCH 73).

See planview for multiple IF locations.



CATEGORY	A	B	C	D
RNP 0.30 DA*	1759/45 456 (500-7%)			
RNP 0.30 DA	2049-1¾ 746 (800-1¾)			

AUTHORIZATION REQUIRED