

VORTAC OED <b>113.6</b> Chan <b>83</b>	APP CRS <b>146°</b>	Rwy Idg TDZE Apt Elev <b>1335</b>	<b>N/A</b> <b>N/A</b> <b>1335</b>
--	------------------------	--	---

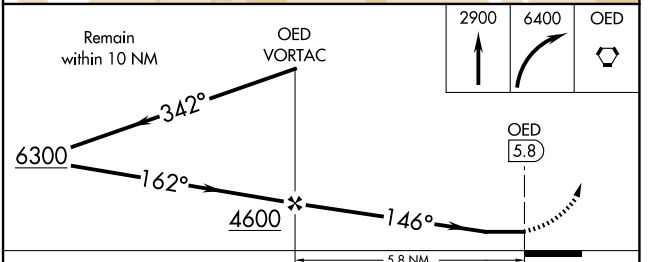
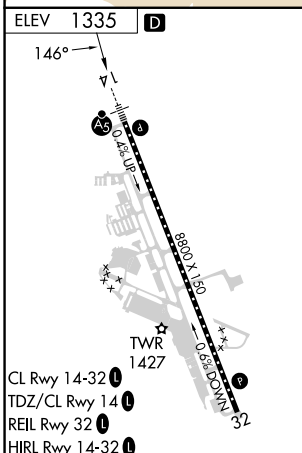
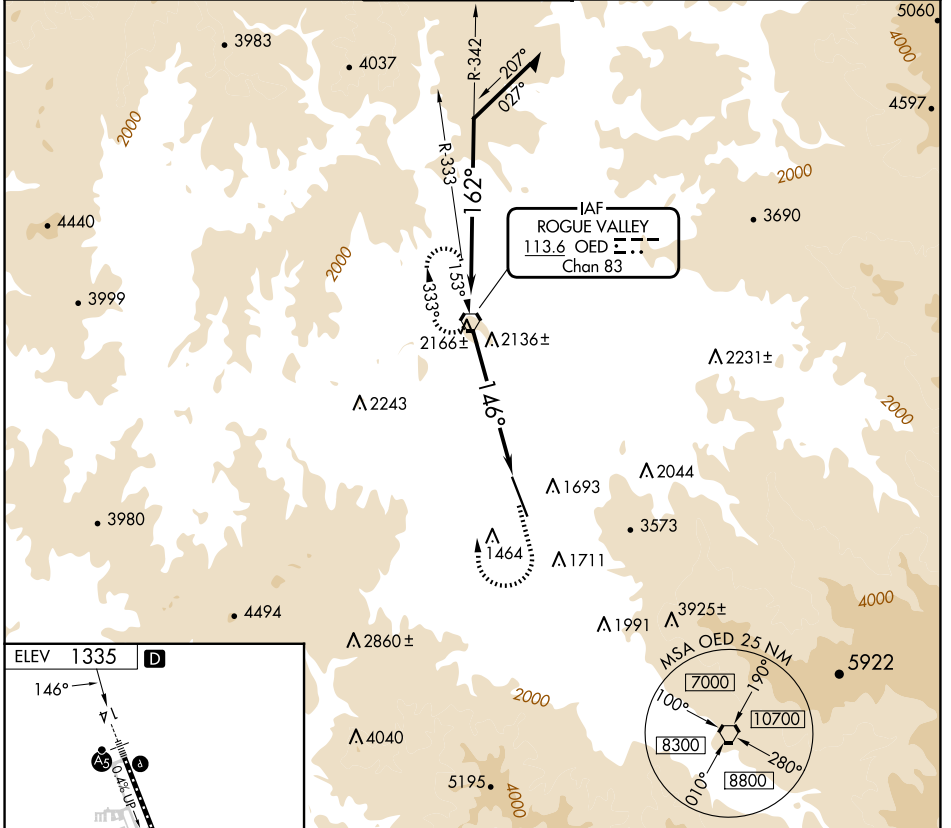
# VOR-A

ROGUE VALLEY INTL/MEDFORD (MFR)

**⚠** If local altimeter setting not received, procedure NA.  
**⚠** Circling NA for Cats C and D northeast of Rwy 14-32.  
**⚠** -3°C

MISSED APPROACH: Climb to 2900 then climbing right turn to 6400 direct OED VORTAC and hold, continue climb-in-hold to 6400.

ATIS <b>127.25</b>	CASCADE APP CON * <b>124.3 379.9</b>	MEDFORD TOWER * <b>119.4 (CTAF) 257.8</b>	GND CON <b>121.8</b>	UNICOM <b>122.95</b>
-----------------------	---	--	-------------------------	-------------------------



FAF to MAP 5.8 NM					
Knots	60	90	120	150	180
Min:Sec	5:48	3:52	2:54	2:19	1:56

CATEGORY	A	B	C	D
CIRCLING	2680-1¼ 1345 (1400-1¼)	2680-1½ 1345 (1400-1½)	2680-3	1345 (1400-3)

NW-1, 17 APR 2025 to 15 MAY 2025

NW-1, 17 APR 2025 to 15 MAY 2025