

APP CRS	Rwy Idg	5004
165°	TDZE	5033
	Apt Elev	5039

RNAV (GPS) RWY 16

MILFORD MUNI/BEN AND JUDY BRISCOE FLD (MLF)

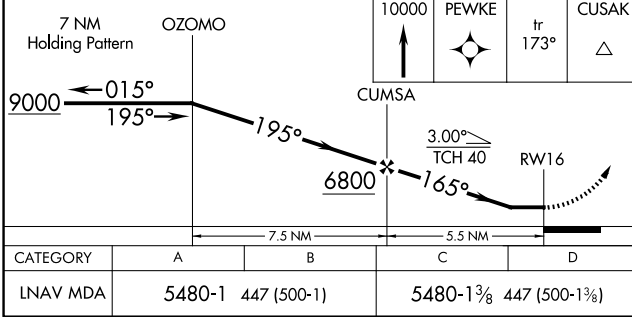
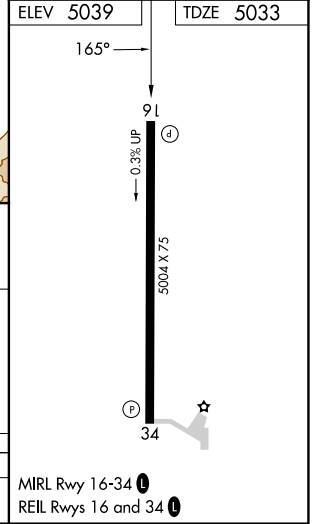
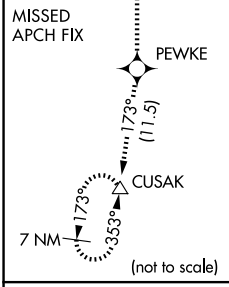
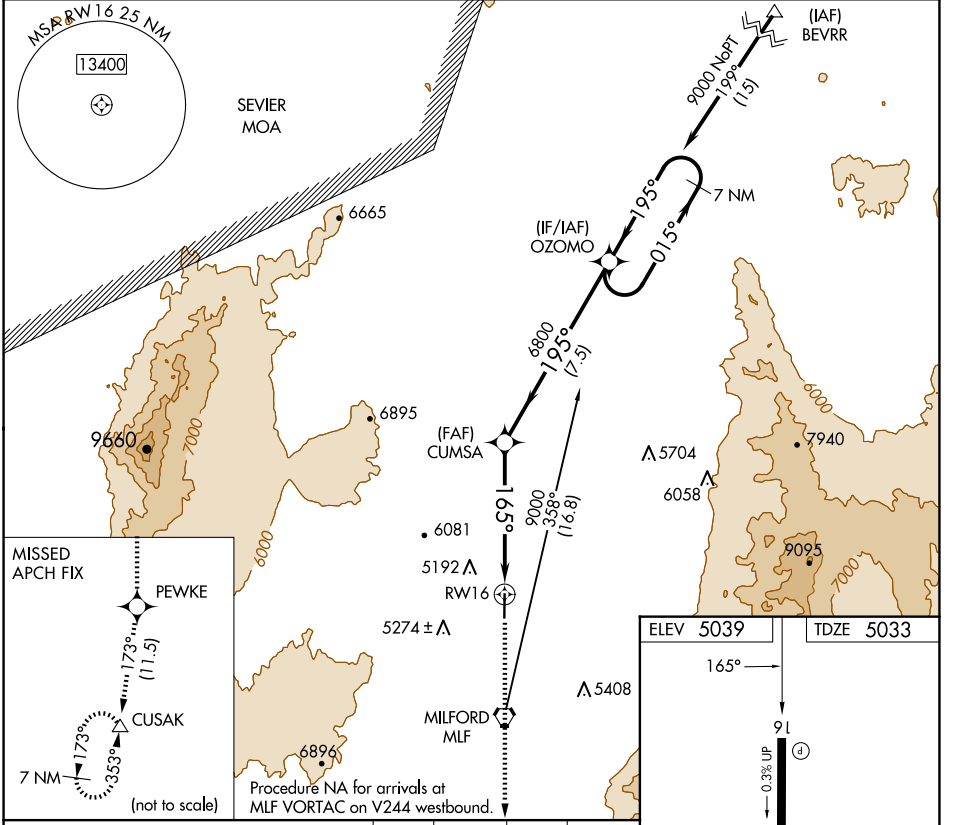
RNP APCH.

When local altimeter setting not received, use Cedar City altimeter setting and increase all MDA 200 feet and increase LNAV Cat C/D visibility 1/2 mile.

-27°C

MISSED APPROACH: Climb to 10000 direct PEWKE and on track 173° to CUSAK and hold.

ASOS 135.025	SALT LAKE CENTER 125.575 379.275	UNICOM 122.8 (CTAF)
------------------------	--	-------------------------------



SW-4, 17 APR 2025 to 15 MAY 2025

SW-4, 17 APR 2025 to 15 MAY 2025