

VORTAC MLF <b>112.1</b> Chan 58	APP CRS <b>344°</b>	Rwy ldg TDZE Apt Elev <b>N/A</b> <b>N/A</b> <b>5042</b>
---------------------------------------	------------------------	--

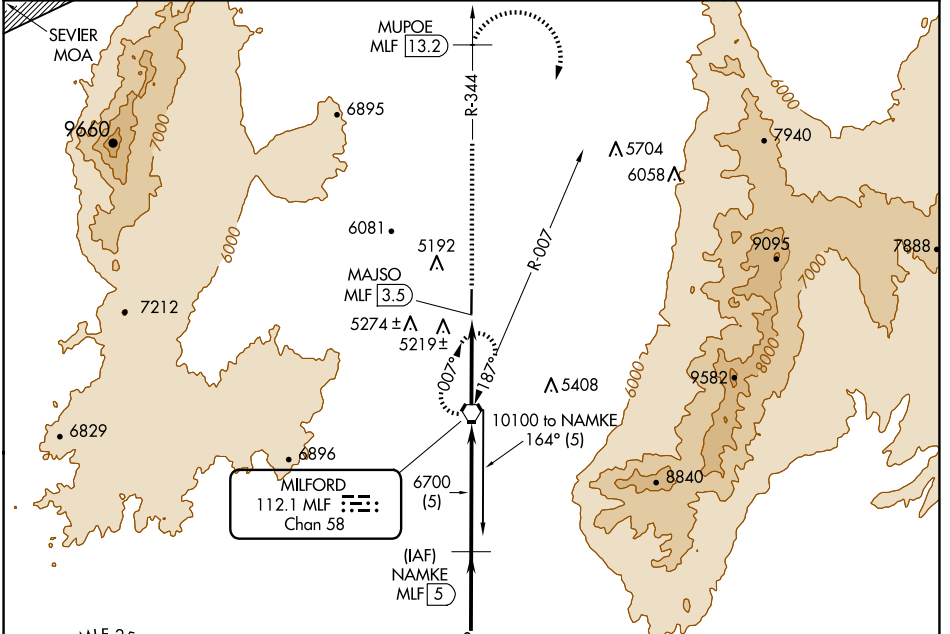
# VOR/DME-A

MILFORD MUNI/BEN AND JUDY BRISCOE FLD (MLF)

**⚠** When local altimeter setting not received, use Cedar City altimeter setting and increase all MDAs 180 feet, Circling Cat D NA. When VGSI inop, procedure NA at night. Visibility reduction by helicopters NA.

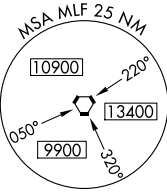
**⚠** MISSED APPROACH: Climb on MLF VORTAC R-344 to MUPOE/MLF 13.2 DME then climbing right turn to 9600 on heading 150° and MLF VORTAC R-007 to MILFORD VORTAC and hold.

ASOS <b>135.025</b>	SALT LAKE CENTER <b>125.575 379.275</b>	UNICOM <b>122.8 (CTAF)</b>
------------------------	--	-------------------------------

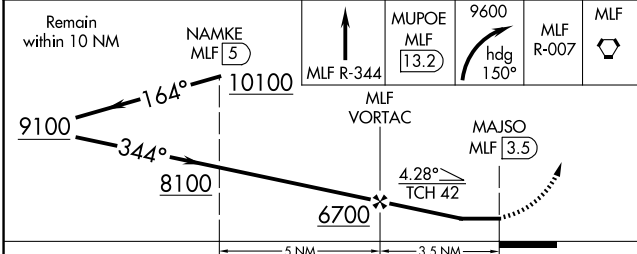
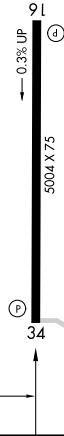


SW-4, 17 APR 2025 to 15 MAY 2025

SW-4, 17 APR 2025 to 15 MAY 2025



ELEV 5042  
MRL Rwy 16-34  
REIL Rws 16 and 34



CATEGORY	A	B	C	D
CIRCLING	5660-1	618 (700-1)	6300-3 1258 (1300-3)	6540-3 1498 (1500-3)