

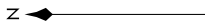
BANND TWO ARRIVAL (RNAV) Arrival Routes

OAKLAND, CALIFORNIA

SW-2, 17 APR 2025 to 15 MAY 2025

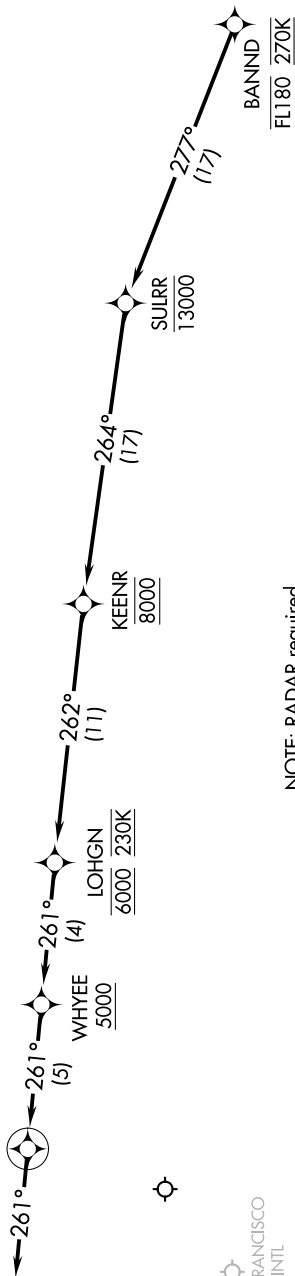
SW-2, 17 APR 2025 to 15 MAY 2025

OAKLAND CENTER
 134.37 281.5
 NORCAL APP CON
 124.8 263.15
 D-ATIS
 133.775
 OAKLAND TOWER
 127.2 256.9 (Rwy 12)
 GND CON
 121.75 (Rwy 12)



HIRMO
 4000

Leg Rwy 12



ARRIVAL ROUTE DESCRIPTION

LANDING RUNWAY 12: From BANND on track 277° to cross SULRR at or below 13000, then on track 264° to cross KEENR at 8000, then on track 262° to cross LOHGN at 6000 and at 230K, then on track 261° to cross WHYEE at or above 5000, then on track 261° to cross HIRMO at 4000, then on track 261°. Expect RADAR vectors to final approach course.

NOTE: RADAR required.
 NOTE: RNAV 1.
 NOTE: DME/DME/IRU or GPS required.

SAN FRANCISCO
 INTL

NORMAN Y MINETA
 SAN JOSE INTL

NOTE: Chart not to scale.

BANND TWO ARRIVAL (RNAV) Arrival Routes

OAKLAND, CALIFORNIA

SAN FRANCISCO BAY OAKLAND INTL (OAK)