

OGDEN, UTAH

# HI-TACAN RWY 32

TACAN HIF Chan 49	APCH CRS 332°	Rwy ldg TDZE Arprt Elev	13,500 4783 4789
----------------------	------------------	-------------------------------	------------------------

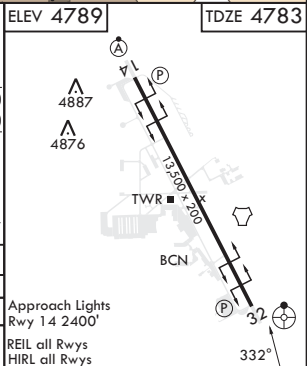
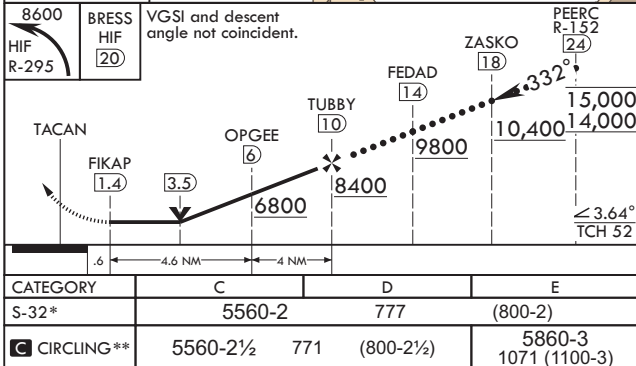
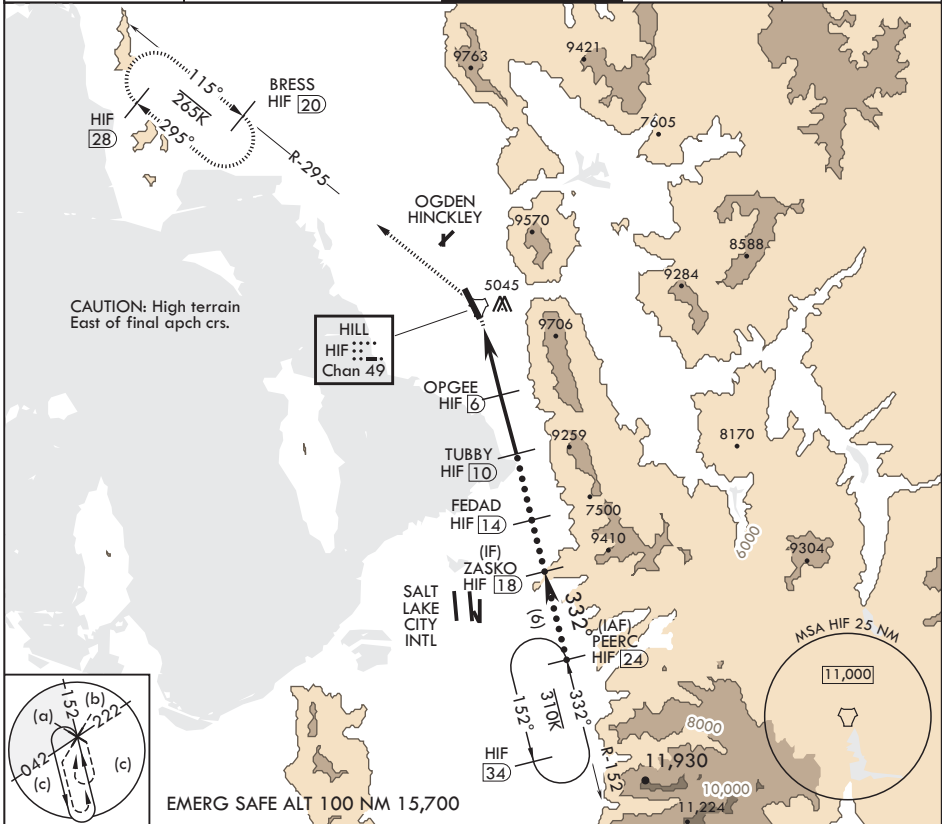
AL-296 (USAF)

HILL AFB (KHIF)

**V** \* When ALS inop, increase CAT CDE vis to 2 1/2 miles.  
\*\* Circling not authorized in sector NE of Rwy 14-32.

**ODALS** MISSED APPROACH: Climbing left turn to 8600 out HIF TACAN R-295 to BRESS and hold.

ATIS 134.925 397.9	SALT LAKE CITY APP CON 121.1 319.25	TOWER 127.15 263.15	GND CON 121.6 275.8	CLNC DEL 124.1 335.8
-----------------------	--	------------------------	------------------------	-------------------------



OGDEN, UTAH

41°07'N - 111°58'W

HILL AFB (KHIF)

Amdt 6 05OCT23

# HI-TACAN RWY 32

SW-4, 17 APR 2025 to 15 MAY 2025

SW-4, 17 APR 2025 to 15 MAY 2025