

# ILS or LOC Z RWY 32R

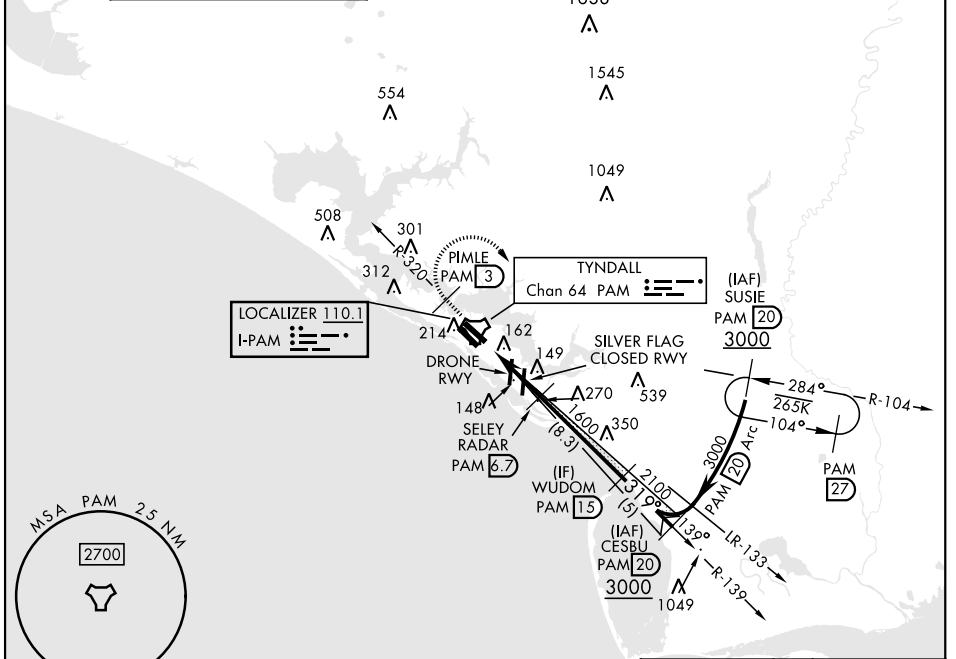
<b>LOC I-PAM</b> <b>110.1</b>	<b>APCH CRS</b> <b>319°</b>	<b>Rwy Ldg</b> <b>10,008</b> <b>TDZE</b> <b>14</b> <b>Arpt Elev</b> <b>17</b>
----------------------------------	--------------------------------	---

[USAF]

TYNDALL AFB (KPAM)

DME or RADAR required		ALSF-1 	<b>MISSED APPROACH:</b> Track outbound PAM R-320 to 3 DME (PIMLE), then turn right to join PAM R-104 to 20 DME (SUSIE) and hold. Maintain 3000.
<b>▽</b> * When ALS inop, increase RVR to 40, vis to ¾ mile. ** When ALS inop, increase CAT AB RVR to 55, vis to 1 mile; CAT CDE vis to 1½ miles.			

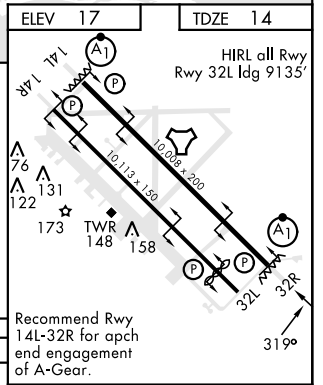
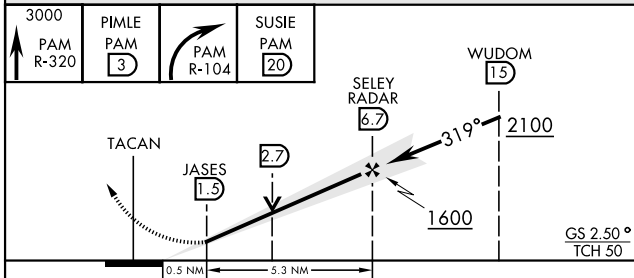
<b>ATIS *</b> <b>254.4</b>	<b>APP CON</b> <b>125.2</b> <b>392.1</b> (N abv 5000') <b>120.825</b> <b>379.3</b> (N blw 5000') <b>124.15</b> <b>338.35</b> (S abv 5000') <b>119.775</b> <b>317.45</b> (S blw 5000')	<b>TOWER *</b> <b>133.95</b> <b>263.15</b>	<b>GND CON</b> <b>121.9</b> <b>259.3</b>	<b>CLNC DEL</b> <b>118.05</b> <b>348.7</b>	<b>ASR/PAR</b>
-------------------------------	---	---	---	---	----------------



SE-3, 17 APR 2025 to 15 MAY 2025

SE-3, 17 APR 2025 to 15 MAY 2025

EMERG SAFE ALT 100 NM 3300



CATEGORY	A		B		C		D		E	
	S-ILS 32R *	214/24	526	600-½	200	540/55	526	600-1	620-2¼	603 (700-2¼)
S-LOC 32R **	540/24	526	600-½		540/55	526	600-1		620-2¼	603 (700-2¼)
<b>CIRCLING</b>	540-1	523	600-1		540-1½	523 (600-1½)	580-2	563 (600-2)	620-2¼	603 (700-2¼)

Recommend Rwy 14L-32R for apch end engagement of A-Gear.					
FAF to MAP 5.3 NM					
Knots	60	90	120	150	180
Min:Sec	5:18	3:32	2:39	2:07	1:46

# ILS or LOC Z RWY 32R