

PANAMA CITY, FLORIDA

# RNAV (GPS) RWY 32R

WAAS CH 52209 W32A	APCH CRS 319°	Rwy ldg TDZE Arprt Elev	10,008 14 17
--------------------------	------------------	-------------------------------	--------------------

- (USAF)

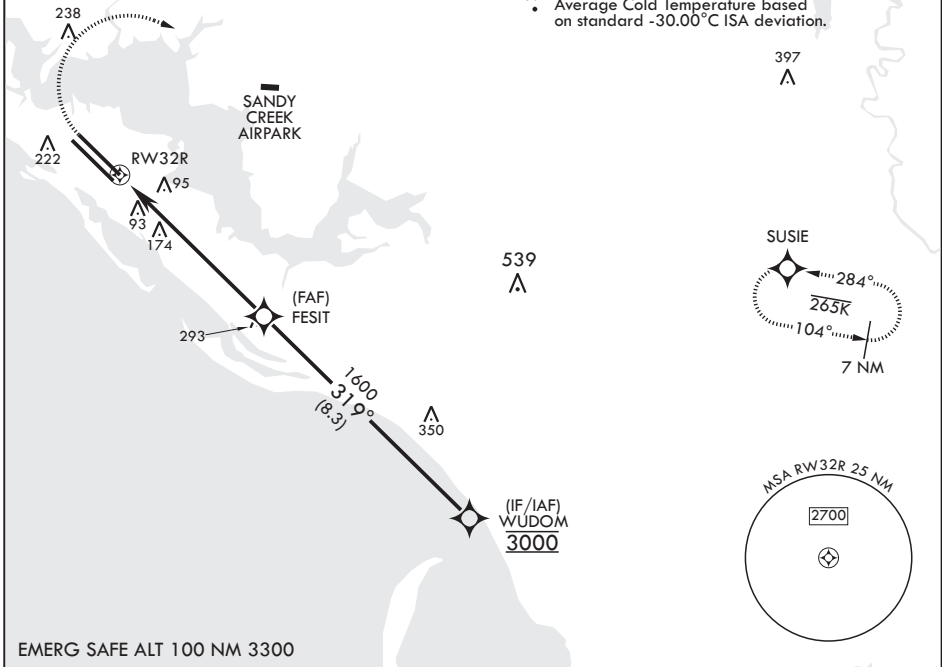
TYNDALL AFB (KPAM)

RNP APCH	ALSF-1	MISSED APPROACH: Climb to 600 then climbing right turn to 3000 direct SUSIE and hold.
<p>▼ * When ALS inop increase RVR to 40, vis to 3/4 mile. ** When ALS inop increase RVR to 55, vis to 1 mile.</p>		

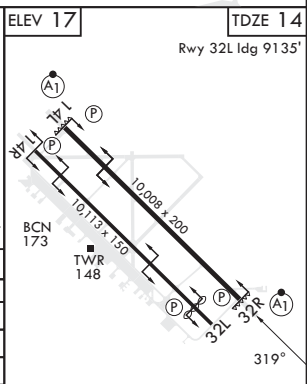
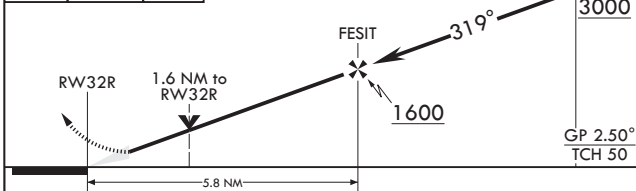
ATIS★ 254.4	APP CON/DEP CON 119.775 317.45 BLW 5000' 124.15 338.35 ABV 5000'	TOWER★ 133.95 263.15	GND CON 121.9 259.3	CLNC DEL 118.05 348.7	ASR/PAR
----------------	--	-------------------------	------------------------	--------------------------	---------

\*\*\* When ALS inop increase CAT AB RVR to 55, vis to 1 mile, CAT CDE vis to 1 3/8 miles.

For uncompensated Baro-VNAV systems, Procedure NA below 15°C (59°F) or above 54°C (130°F).  
Average Cold Temperature based on standard -30.00°C ISA deviation.



600	3000	SUSIE	WUDOM	ELEV 17	TDZE 14
crs 318°					Rwy 32L ldg 9135'



CATEGORY	A	B	C	D	E
LPV DA*	214/24		200	(200-½)	
LNAV/VNAV DA**	362/30		348	(400-5%)	
LNAV MDA***	480/24	466 (500-½)	480/50	466	(500-1)
Ⓢ CIRCLING	540-1	523 (600-1)	540-1½ 523 (600-1½)	580-2 563 (600-2)	620-2¼ 603 (700-2¼)

HIRL all Rwy's  
Recommend Rwy 14L-32R for  
apch end engagement of A-Gear

PANAMA CITY, FLORIDA

30°04'N - 85°34'W

TYNDALL AFB (KPAM)

Amdt 3 22APR21

# RNAV (GPS) RWY 32R

SE-3, 17 APR 2025 to 15 MAY 2025

SE-3, 17 APR 2025 to 15 MAY 2025