

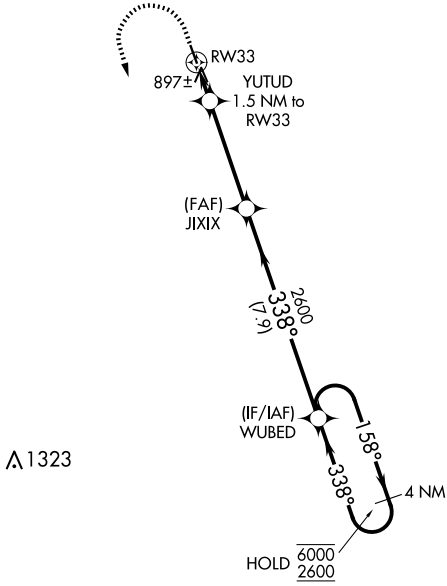
APP CRS	Rwy Idg	3798
338°	TDZE	796
	Apt Elev	796

RNAV (GPS) RWY 33

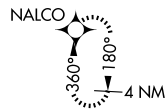
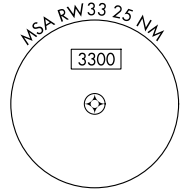
PEMBINA MUNI (PMB)

RNP APCH-GPS.		MISSED APPROACH: Climb to 1200 then climbing left turn 2600 direct NALCO and hold.
<p>⚠ Circling Rwy 15 NA at night. Obtain local altimeter setting on CTAF; when not received, use Hallock altimeter setting and increase all MDA 60 feet and LNAV Cat C visibility ¼ SM.</p>		

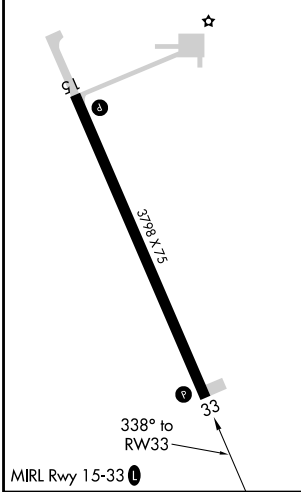
MINNEAPOLIS CENTER 132.15 269.6	UNICOM 122.8 (CTAF) 0
---	---------------------------------



A 1323



ELEV 796	TDZE 796
----------	----------



1200	2600	NALCO	VGSI and descent angles not coincident (VGSI Angle 3.00/TCH 26).
↑	↶	✦	
YUTUD 1.5 NM to RW33		JIXIX	WUBED 4 NM Holding Pattern
RW33		← 338° 2600	← 338° 2600
↖ 3.00° TCH 40		↗ 158° 6000	
1320		↖ 338° 2600	
1.5		4.1 NM	7.9 NM
CATEGORY	A	B	C
LNAV MDA	1160-1 364 (400-1)		
ⓐ CIRCLING	1200-1 404 (500-1)	1260-1 464 (500-1)	1260-1½ 464 (500-1½)
	NA		

NC-1, 17 APR 2025 to 15 MAY 2025

NC-1, 17 APR 2025 to 15 MAY 2025