

LOC I-PUB 109.5	APP CRS 080°	Rwy Idg 10496
		TDZE 4671
		Apt Elev 4729


ILS or LOC RWY 8R

PUEBLO MEML (PUB)

DME required.

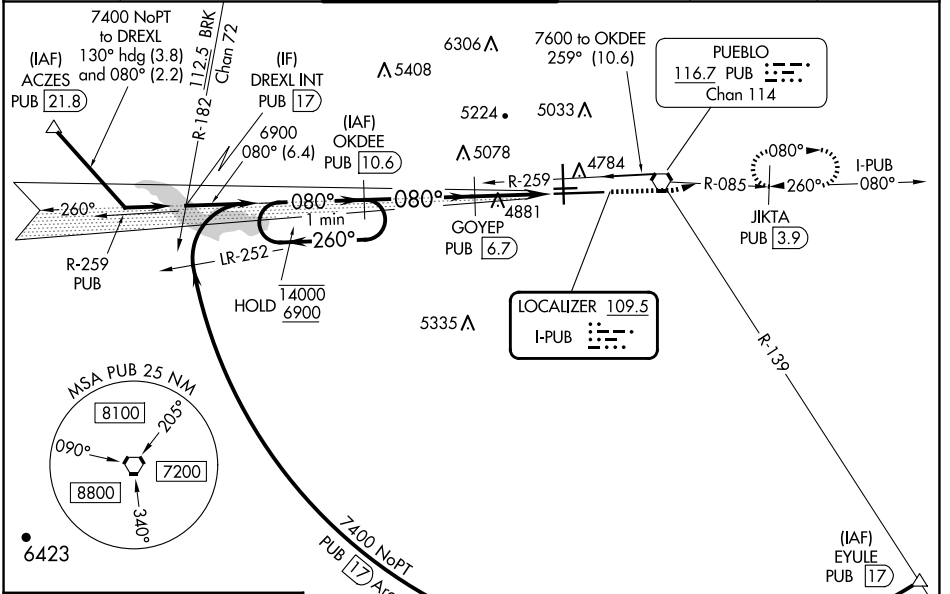
⚠ Circling NA for Cat E west of Rwy 17-35. Autopilot coupled approach NA below 4950. Procedure turn NA for Cat E aircraft. DME from PUB VORTAC, simultaneous reception of I-PUB and PUB DME required. For inop ALS, increase S-ILS 8R Cat E visibility to 3/4 SM and S-LOC 8R Cat E visibility to 1 1/2 SM.

MALSR

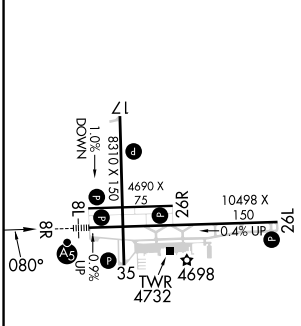


MISSED APPROACH: Climb to 7000 on heading 070° and on PUB VORTAC R-085 to JIKTA/PUB 3.9 DME and hold, continue climb-in-hold to 7000.

ATIS 125.25	DENVER APP CON ★ 120.1 290.5	PUEBLO TOWER ★ 119.1 (CTAF) 257.8	GND CON 121.9	CLNC DEL 120.9	UNICOM 122.95
-----------------------	--	---	-------------------------	--------------------------	-------------------------



ELEV 4729	D	TDZE 4671
-----------	----------	-----------



CATEGORY	A	B	C	D	E
S-ILS 8R	4871-1/2 200 (200-1/2)				
S-LOC 8R	5200-1/2 529 (500-1/2)		5200-1 529 (500-1)		
C CIRCLING	5340-1 611 (700-1)		5580-2 1/2 851 (900-2 1/2)		5800-3 1071 (1100-3)

PUEBLO, COLORADO
Amdt 1D 08SEP22

38°17'N-104°30'W

PUEBLO MEML (PUB) ILS or LOC RWY 8R

SW-1, 17 APR 2025 to 15 MAY 2025

SW-1, 17 APR 2025 to 15 MAY 2025