

VORTAC PUB <b>116.7</b> Chan <b>114</b>	APP CRS <b>252°</b>	Rwy ldg <b>10496</b> TDZE <b>4659</b> Apt Elev <b>4729</b>
---	------------------------	--

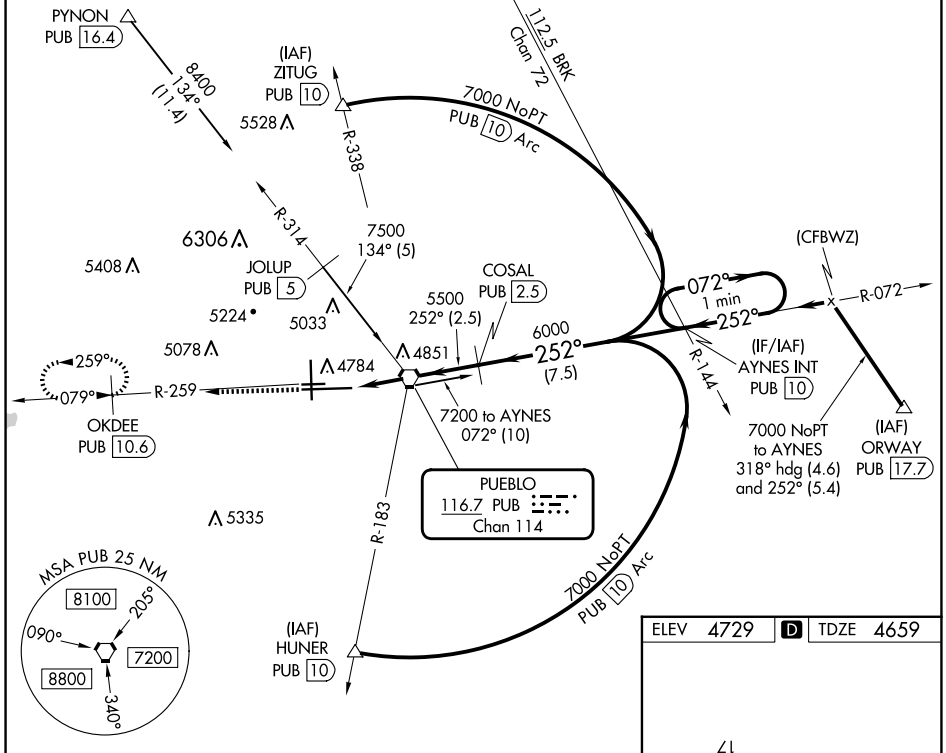
# VOR RWY 26L

PUEBLO MEML (PUB)

DME required. RADAR required for procedure entry at PYNON.

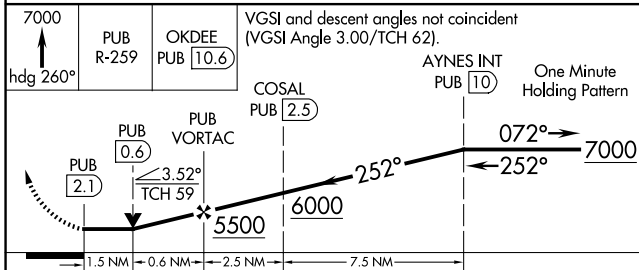
MISSED APPROACH: Climb to 7000 on heading 260° and on PUB VORTAC R-259 to OKDEE/PUB 10.6 DME and hold.

ATIS <b>125.25</b>	DENVER APP CON ★ <b>120.1 290.5</b>	PUEBLO TOWER ★ <b>119.1 (CTAF) 0 257.8</b>	GND CON <b>121.9</b>	CLNC DEL <b>120.9</b>	UNICOM <b>122.95</b>
-----------------------	--	---	-------------------------	--------------------------	-------------------------

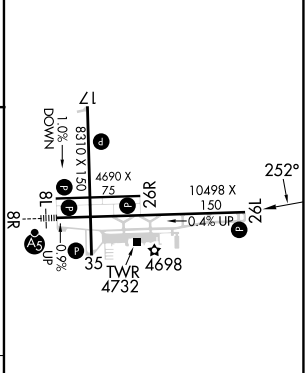


SW-1, 17 APR 2025 to 15 MAY 2025

SW-1, 17 APR 2025 to 15 MAY 2025



ELEV <b>4729</b>	<b>D</b> TDZE <b>4659</b>
------------------	---------------------------



CATEGORY	A	B	C	D
S-26L	5120-1	461 (400-1)	5120-1 <sup>3</sup> / <sub>8</sub> 461 (400-1 <sup>3</sup> / <sub>8</sub> )	NA
<b>C</b> CIRCLING	5340-1	611 (700-1)		NA

HIRL Rwy 8R-26L  
MIRL Rwy 17-35 and 8L-26R  
REIL Rwy 8L, 17, 26L, 26R and 35