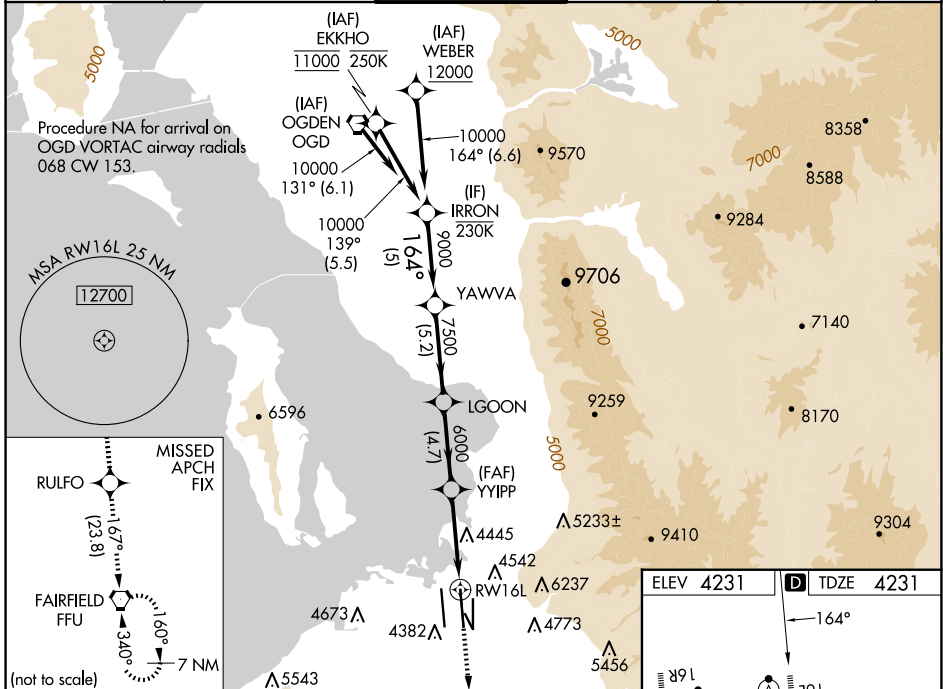


WAAS CH 70546 W16B	APP CRS 164°	Rwy Idg TDZE Apt Elev	12002 4231 4231
--	------------------------	-----------------------------	--

RNAV (GPS) Y RWY 16L

SALT LAKE CITY INTL (SLC)

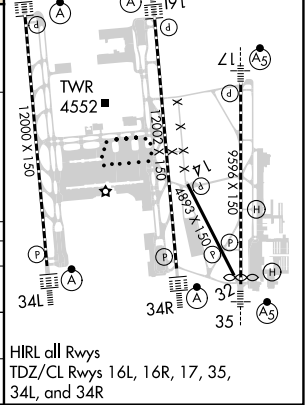
RNP APCH - GPS.		ALSIF-2		MISSED APPROACH: Climb to 10000 direct RULFO and on track 167° to FFU VORTAC and hold.	
<p>▼ LNAV procedure NA during simultaneous operations. Simultaneous approach authorized. Use of FD or AP required during simultaneous operations. For uncompensated Baro-VNAV systems, LNAV/VNAV NA below -10°C or above 49°C. For inop ALS, increase LPV Cat E visibility to RVR 4000, increase LNAV/VNAV Cat A visibility to RVR 4500, increase Cats C/D visibility to RVR 5500, increase Cat E visibility to 6000, and increase LNAV Cat E visibility to 1 1/2 SM.</p>					
D-ATIS 124.75 125.625	SALT LAKE CITY APP CON 125.7 284.6	SALT LAKE CITY TOWER 119.05 257.8	GND CON 123.775 348.6	CLNC DEL 127.3 379.975	CPDLC



IRRON VGSI and RNAV glidepath not coincident (VGSI Angle 3.00/TCH 70).

IRRON	YAWWA	LGOON	RULFO	FFU
10000	9000	7500	6000	4445
GP 3.00°				
TCH 55				
5 NM	5.2 NM	4.7 NM	4 NM	1.4 NM
164°				
167°				
1.4 NM to RW16L				

CATEGORY	A	B	C	D	E
LPV DA	4431/18 200 (200-1/2)				
LNAV/VNAV DA	4537/24 306 (400-1/2)	4559/26 328 (400-1/2)	4574/30 343 (400-5/8)	4593/35 362 (400-5/8)	4634/40 403 (500-3/4)
LNAV MDA	4760/24	529 (600-1/2)	4760/55 529 (600-1)		



SW-4, 17 APR 2025 to 15 MAY 2025

SW-4, 17 APR 2025 to 15 MAY 2025