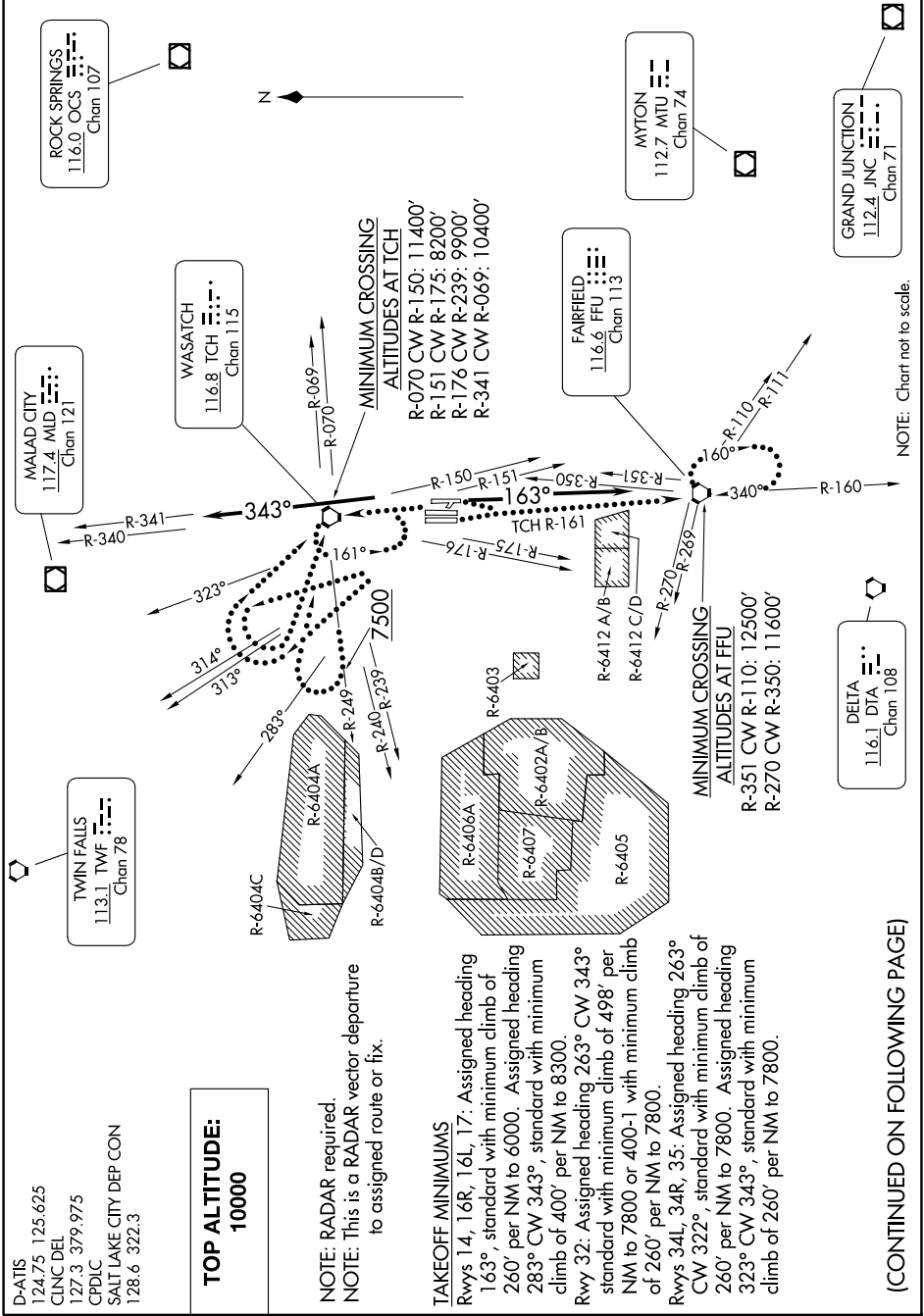


SALT LAKE FOUR DEPARTURE

AL-365 (FAA)

SALT LAKE CITY INTL (SLC)
SALT LAKE CITY, UTAH

SW-4, 17 APR 2025 to 15 MAY 2025



D-ATIS 124.75 125.625
 CLNC DEL 127.3 379.975
 CPDLC
 SALT LAKE CITY DEP CON 128.6 322.3

**TOP ALTITUDE:
 10000**

NOTE: RADAR required.
NOTE: This is a RADAR vector departure to assigned route or fix.

TAKEOFF MINIMUMS
 Rwys 14, 16R, 16L, 17: Assigned heading 163°, standard with minimum climb of 260' per NM to 6000. Assigned heading 283° CW 343°, standard with minimum climb of 400' per NM to 8300.
 Rwy 32: Assigned heading 263° CW 343° standard with minimum climb of 498' per NM to 7800 or 400-1 with minimum climb of 260' per NM to 7800.
 Rwys 34L, 34R, 35: Assigned heading 263° CW 322°, standard with minimum climb of 260' per NM to 7800. Assigned heading 323° CW 343°, standard with minimum climb of 260' per NM to 7800.

(CONTINUED ON FOLLOWING PAGE)

NOTE: Chart not to scale.

SW-4, 17 APR 2025 to 15 MAY 2025