

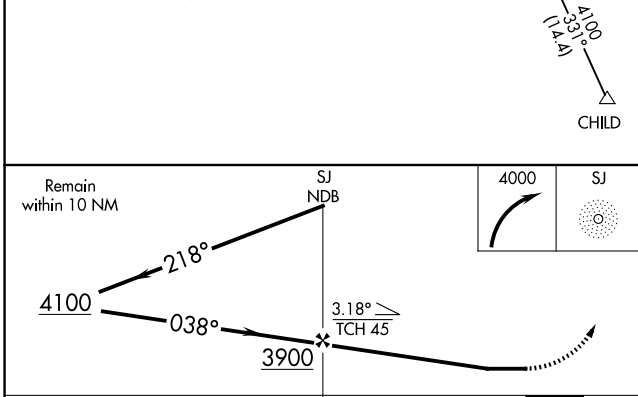
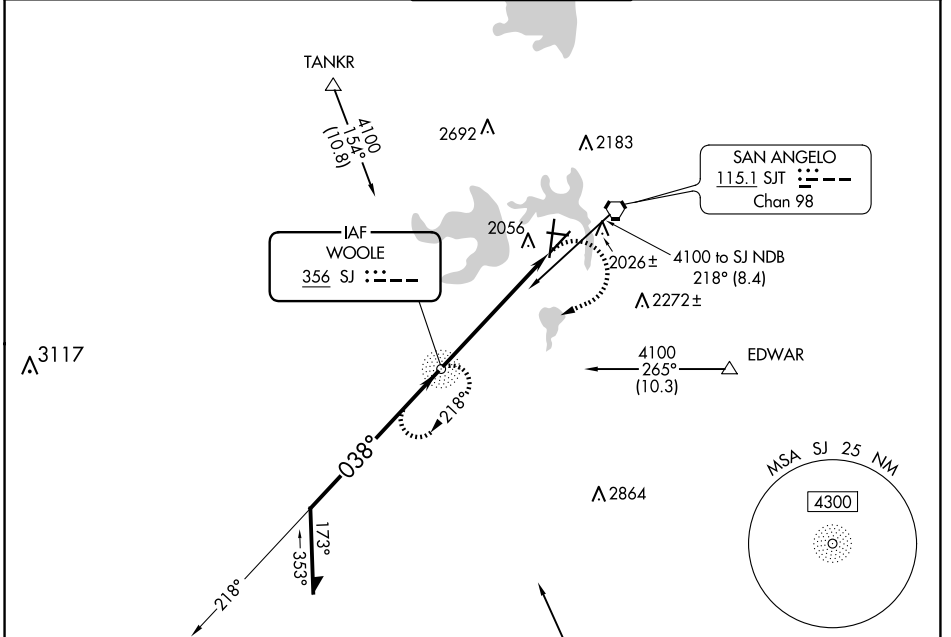
NDB SJ <b>356</b>	APP CRS <b>038°</b>	Rwy Idg TDZE Apt Elev	<b>5940</b> <b>1917</b> <b>1919</b>
----------------------	------------------------	-----------------------------	---

# NDB RWY 3

SAN ANGELO RGNL/MATHIS FLD (SJT)

<p>For inop ALS, increase Cat A/B visibility to RVR 5500, and Cat C/D to 2 SM.</p>	<p>MALSR</p>	<p>MISSED APPROACH: Climbing right turn to 4000 direct SJ NDB and hold.</p>		

ATIS <b>128.45 319.0</b>	SAN ANGELO APP CON ★ <b>125.35 354.1</b>	MATHIS TOWER ★ <b>118.3 (CTAF) 284.7</b>	GND CON <b>121.9 348.6</b>	UNICOM <b>122.95</b>
-----------------------------	---	---	-------------------------------	-------------------------



ELEV 1919	TDZE 1917
MIRL Rwy 9-27 and 18-36	
HIRL Rwy 3-21	
REIL Rwy 18	

Detailed approach diagram showing runway 36, 36L, 36R, and 36C. Key features include:
 

- Runway 36: 038° 5.7 NM from FAF
- Runway 36L: 81° 0.3% UP
- Runway 36R: 212° 0.4% UP
- Runway 36C: 36° 0.3% DOWN
- Altitudes: 4406 X 75, 8054 X 150, 5940 X 150
- TWR 1990
- MSA SJ 25 NM: 4300 ft

FAF to MAP 5.7 NM	Knots	60	90	120	150	180
	Min:Sec	5:42	3:48	2:51	2:17	1:54

CATEGORY	A	B	C	D
S-3	2640/40	723 (800-¾)	2640-1½	723 (800-1%)
CIRCLING	2640-1	721 (800-1)	2640-2	2700-2½ 781 (800-2½)

SC-3, 17 APR 2025 to 15 MAY 2025

SC-3, 17 APR 2025 to 15 MAY 2025