

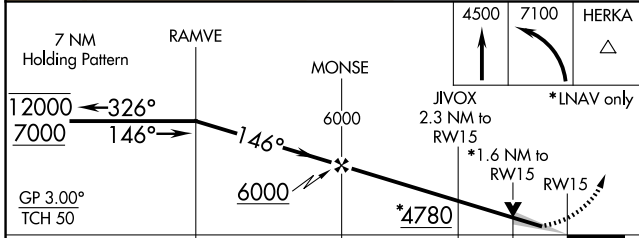
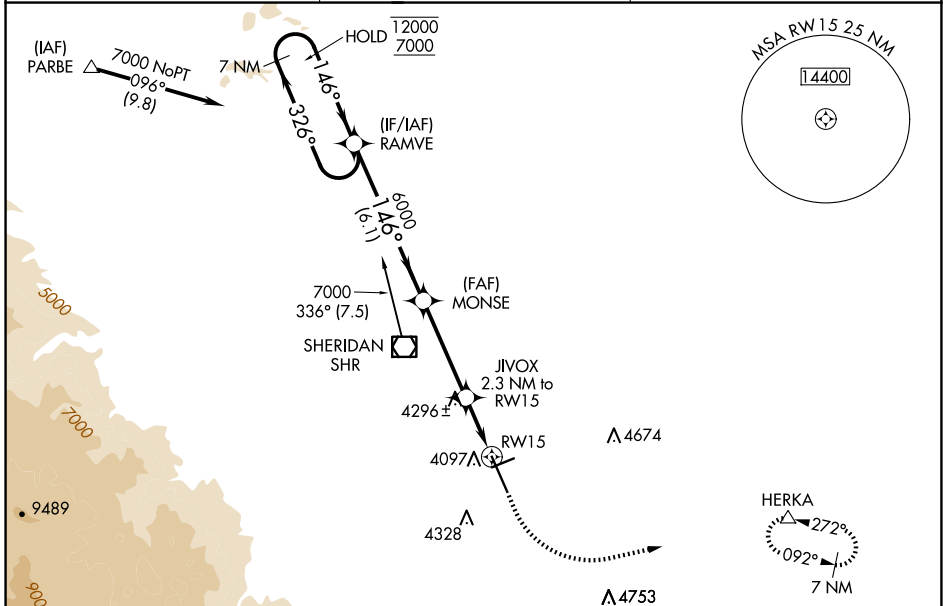
| | | |
|--|------------------------|---|
| WAAS CH 81899 W15A | APP CRS 146° | Rwy Idg 8301 TDZE 4014 Apt Elev 4021 |
|--|------------------------|---|

RNAV (GPS) RWY 15

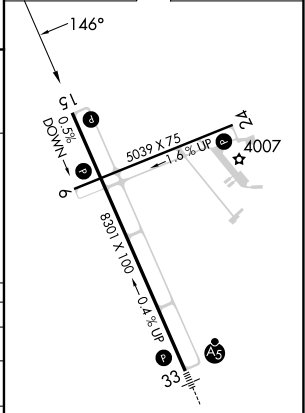
SHERIDAN COUNTY (SHR)

| | |
|---|---|
| RNP APCH. | MISSED APPROACH: Climb to 4500 then climbing left turn to 7100 direct HERKA and hold, continue climb-in-hold to 7100. |
| <p>V Circling to Rwy 24 NA at night. For uncompensated Baro-VNAV systems, LNAV/VNAV NA below -26°C or above 51°C. When local altimeter setting not received, procedure NA.</p> <p>A</p> <p>⚡ -19°C</p> | |

| | | |
|------------------------|---|--|
| ASOS 135.175 | SALT LAKE CENTER 127.75 351.9 | UNICOM 123.0 (CTAF) L |
|------------------------|---|--|



| | |
|-----------|--------------------|
| ELEV 4021 | D TDZE 4014 |
|-----------|--------------------|



| CATEGORY | A | B | C | D |
|-------------------|-----------------------|-----------------------|-------------------------------|-------------------------|
| LPV DA | | 4264-3/4 | 250 (300-3/4) | |
| LNAV/VNAV DA | | 4292-7/8 | 278 (300-7/8) | |
| LNAV MDA | 4560-1 | 546 (600-1) | 4560-1 5/8 | 546 (600-1 5/8) |
| C CIRCLING | 4600-1 579 (600-1) | 4640-1 619 (700-1) | 4860-2 1/2 839 (900-2 1/2) | 5220-3 1199 (1200-3) |

HIRL Rwy 15-33 **L**
MIRL Rwy 6-24 **L**
REIL Rws 6, 15, and 24 **L**

NW-1, 17 APR 2025 to 15 MAY 2025

NW-1, 17 APR 2025 to 15 MAY 2025