

FORT LEWIS, WASHINGTON

# RNAV (GPS) RWY 15

APCH CRS	Rwy Idg	<b>6124</b>
<b>151°</b>	TDZE	<b>300</b>
	Arprt Elev	<b>301</b>

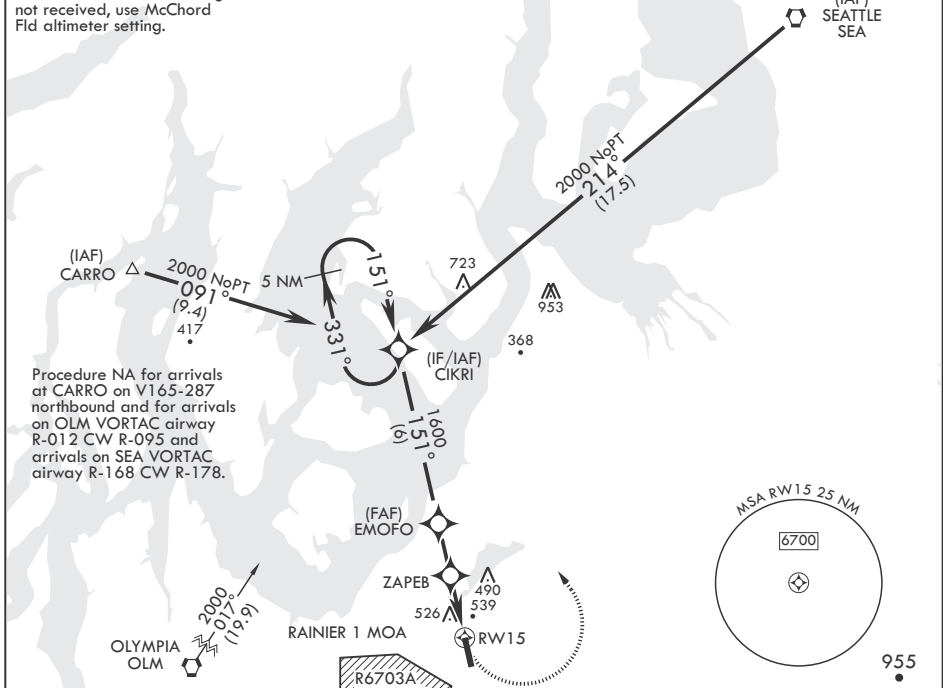
-(USA)

GRAY AAF (JOINT BASE LEWIS MCCHORD) (KGRF)

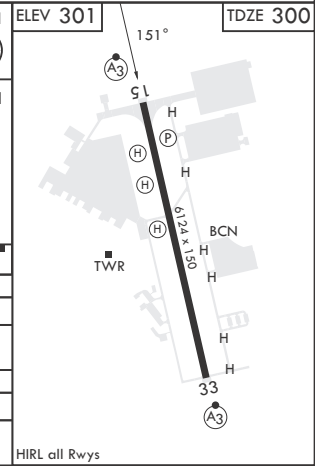
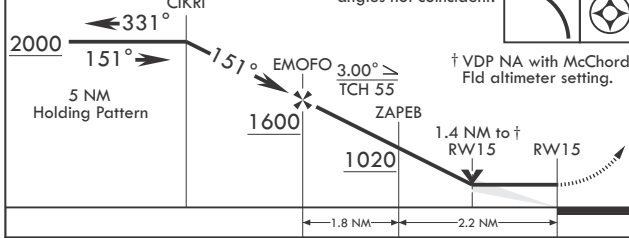
RNP APCH	SSALR	MISSED APPROACH: Climbing left turn to 2000 direct CIKRI and hold.
▼ * Circling not authorized W of Rwy 15-33.		

ATIS <b>124.65 306.2</b>	SEATTLE APP CON/DEP CON <b>120.1 290.9</b>	TOWER * <b>119.325 (CTAF) 256.8</b>	GND CON <b>121.9 290.2</b>	CLNC DEL <b>121.9 290.2</b>
-----------------------------	-----------------------------------------------	----------------------------------------	-------------------------------	--------------------------------

When local altimeter setting not received, use McChord Fld altimeter setting.



2000	CIKRI	VGSI and descent angles not coincident.	2000	CIKRI	ELEV 301	TDZE 300
------	-------	-----------------------------------------	------	-------	----------	----------



CATEGORY	A		B		C		D	
LNAV MDA	800/24	500	(500-½)		800/50	500	(500-1)	
CIRCLING*	840-1	539	(600-1)		840-1½	539	(600-1½)	
MC CHORD FLD ALTIMETER SETTING MINIMUMS								
LNAV MDA	820/24		520		(600-½)			
CIRCLING*	860-1	559	(600-1)		860-1½	559	(600-1½)	
					940-2	639	(700-2)	

FORT LEWIS, WASHINGTON

47°05'N - 122°35'W GRAY AAF (JOINT BASE LEWIS MCCHORD) (KGRF)

Amdt 3 10AUG23

# RNAV (GPS) RWY 15

NW-1, 17 APR 2025 to 15 MAY 2025

NW-1, 17 APR 2025 to 15 MAY 2025