

LOC/DME I-TXK 111.9 Chan 56	APP CRS 220°	Rwy ldg 6602 TDZE 384 Apt Elev 390
---	------------------------	---

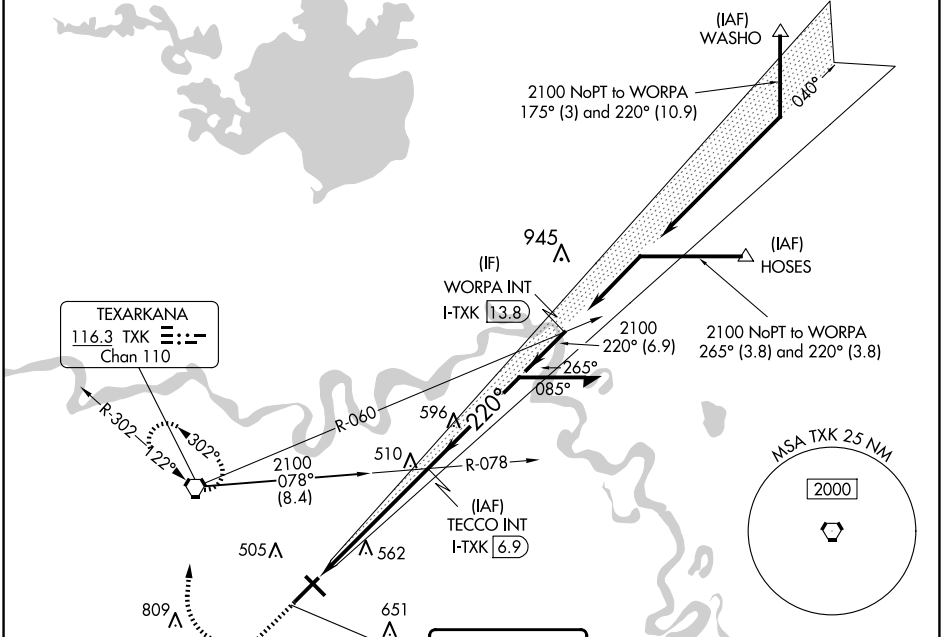
ILS or LOC RWY 22

TEXARKANA RGNL-WEBB FLD (TXK)

⚠ For inop ALS, increase S-LOC 22 Cats C/D visibility to 1 SM.

MALSR
A5
MISSED APPROACH: Climb to 900 then climbing right turn to 2000 direct TXK VORTAC and hold, continue climb-in-hold to 2000.

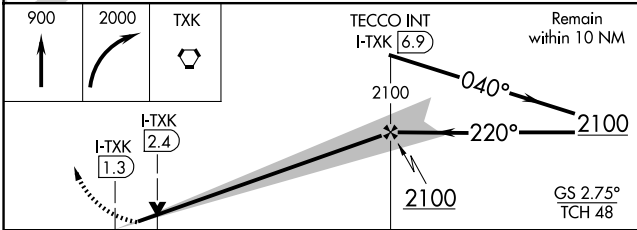
ATIS 120.2	FORT WORTH CENTER 123.925 269.475	TEXARKANA TOWER* 123.875 (CTAF) 0 235.625	GND CON 119.225
----------------------	---	---	---------------------------



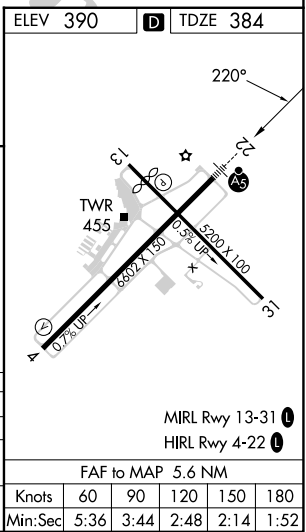
SC-1, 17 APR 2025 to 15 MAY 2025

SC-1, 17 APR 2025 to 15 MAY 2025

ELEV 390	D TDZE 384
----------	-------------------



CATEGORY	A	B	C	D
S-ILS 22		584-1/2	200 (200-1/2)	
S-LOC 22	760-1/2	376 (400-1/2)	760-5/8	376 (400-5/8)
CIRCLING	820-1 430 (500-1)	900-1 510 (600-1)	1000-1 3/4 610 (700-1 3/4)	1080-2 1/4 690 (700-2 1/4)



MIRL Rwy 13-31	0
HIRL Rwy 4-22	1
FAF to MAP 5.6 NM	
Knots	60 90 120 150 180
Min:Sec	5:36 3:44 2:48 2:14 1:52