

|                         |                        |   |
|-------------------------|------------------------|---|
| WAAS<br>Ch <b>49199</b> | APP CRS<br><b>310°</b> | Rwy Idg <b>4559</b><br>TDZE <b>390</b><br>Apt Elev <b>390</b> |
|-------------------------|------------------------|---|

**RNAV (GPS) RWY 31**  
TEXARKANA RGNL-WEBB FLD (TXK)

|  |  |  |
|--|--|--|
| RNP APCH-GPS.  |  | MISSED APPROACH:<br>Climb to 2000 direct JELGA and hold. |
| <p>▼ Rwy 31 helicopter visibility reduction below ¾ SM NA. For uncompensated Baro-VNAV systems, LNAV/VNAV NA below -15°C or above 54°C. When local altimeter setting not received, use De Queen altimeter setting and increase all DA/MDA 100 feet, increase LPV and LNAV/VNAV all Cats, and LNAV Cat C and D visibility ¼ SM, and Circling Cat C and D visibility ¼ SM. Baro-VNAV and VDP NA when using De Queen altimeter setting.</p> |  |  |

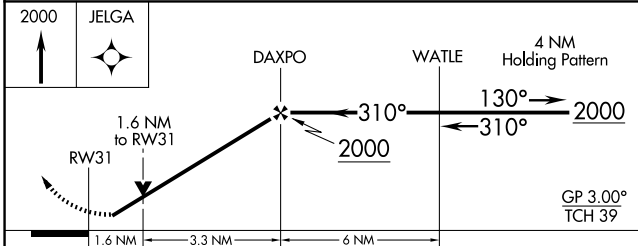
|                      |   |   |                           |
|----------------------|---|---|---------------------------|
| ATIS<br><b>120.2</b> | FORT WORTH CENTER<br><b>123.925 269.475</b> | TEXARKANA TOWER*<br><b>123.875 (CTAF) 235.625</b> | GND CON<br><b>119.225</b> |
|----------------------|---|---|---------------------------|



SC-1, 17 APR 2025 to 15 MAY 2025

SC-1, 17 APR 2025 to 15 MAY 2025

|          |          |
|----------|----------|
| ELEV 390 | TDZE 390 |
|----------|----------|



| CATEGORY     | A                   | B                    | C                    | D |
|--------------|---------------------|----------------------|----------------------|---|
| LPV DA       | 645-1 255 (300-1)   |                      |                      |   |
| LNAV/VNAV DA | 707-1¼ 317 (400-1¼) |                      |                      |   |
| LNAV MDA     | 920-1 530 (600-1)   | 920-1½ 530 (600-1½)  | 920-1¾ 530 (600-1¾)  |   |
| CIRCLING     | 920-1 530 (600-1)   | 1000-1¾ 610 (700-1¾) | 1080-2¼ 690 (700-2¼) |   |

