


| | | |
|---------------------------|------------------------|------------------------|
| LOC I-BAF 111.9 | APP CRS 204° | Rwy Idg 8919 |
| | | TDZE 270 |
| | | Apt Elev 270 |

ILS or LOC RWY 20

WESTFIELD-BARNES RGNL (BAF)

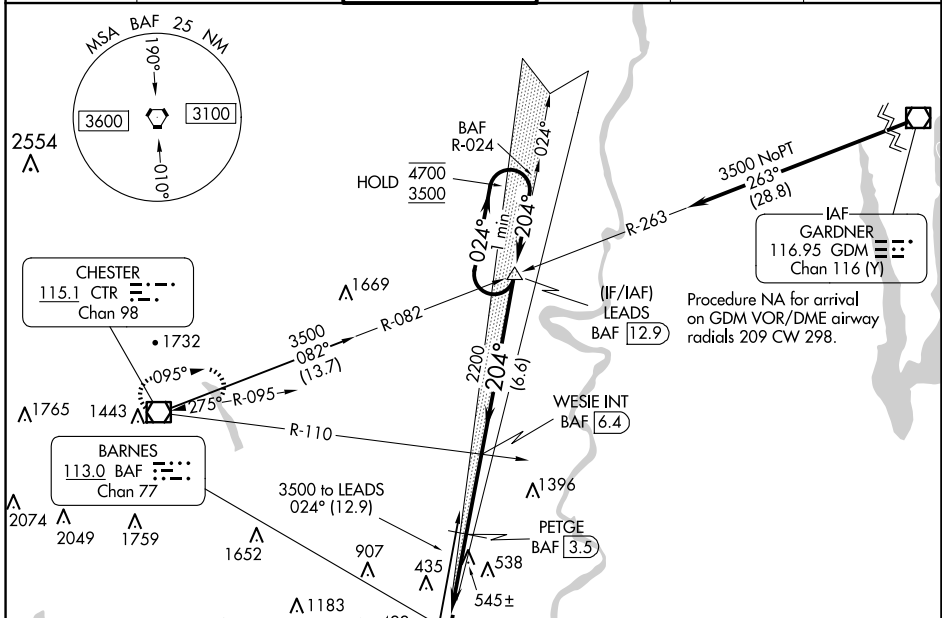
⚠ Circling Rwy 15 NA at night. DME from BAF VORTAC. DME use requires simultaneous reception of I-BAF and BAF DME. For inop ALS, increase S-ILS 20 Cat E visibility to RVR 4000; increase S-LOC 20 Cat E visibility to 3 SM; increase PETGE fix minimums S-LOC 20 Cat E visibility to 1 1/2 SM.

⚠ -21°C

MALSR 

MISSED APPROACH: Climb to 1300 then climbing right turn to 4000 direct CTR VOR/DME and hold, continue climb-in-hold to 4000.

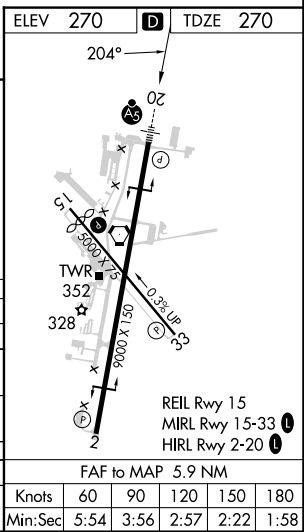
| | | | | | |
|-----------------------------|--|---|-------------------------------|--------------------------|----------------------|
| ATIS 127.1 263.15 | BRADLEY APP CON 125.35 281.5 | WESTFIELD TOWER * 125.075 251.1 | GND CON 121.7 289.4 | CLNC DEL 121.7 | CTAF 118.9 |
|-----------------------------|--|---|-------------------------------|--------------------------|----------------------|



NE-1, 17 APR 2025 to 15 MAY 2025

NE-1, 17 APR 2025 to 15 MAY 2025

| | |
|-----------------------------------|--|
| ELEV 270 | TDZE 270 |
| 1300 | 4000 |
| CTR | * LOC only. |
| WESIE INT BAF 6.4 | LEADS BAF 12.9 |
| PETGE BAF 3.5 | One Minute Holding Pattern |
| BAF 0.5 | BAF 2 |
| 2200 | 2200 |
| 204° | 204° |
| 4700 | 3500 |
| GS 3.00° | TCH 50 |
| 1.5 NM | 1.5 NM |
| 2.9 NM | 6.6 NM |
| 1260 | |
| CATEGORY | A B C D E |
| S-ILS 20 | 520/24 250 (300-1/2) |
| S-LOC 20 | 1260/40 990 (1000-3/4) 1260/55 990 (1000-1) 1260-2 1/2 990 (1000-2 1/2) |
| CIRCLING | 1260-1 1/4 990 (1000-1 1/4) 1260-1 1/2 990 (1000-1 1/2) 1260-3 990 (1000-3) 1660-3 1390 (1400-3) |
| PETGE FIX MINIMUMS (DME REQUIRED) | |
| S-LOC 20 | 800/24 530 (600-1/2) 800/55 530 (600-1) |
| CIRCLING | 1160-1 1/4 890 (900-1 1/4) 1160-2 3/4 890 (900-2 3/4) 1660-3 1390 (1400-3) |



| | | | | | |
|-------------------|------|------|------|------|------|
| FAF to MAP 5.9 NM | | | | | |
| Knots | 60 | 90 | 120 | 150 | 180 |
| Min:Sec | 5:54 | 3:56 | 2:57 | 2:22 | 1:58 |