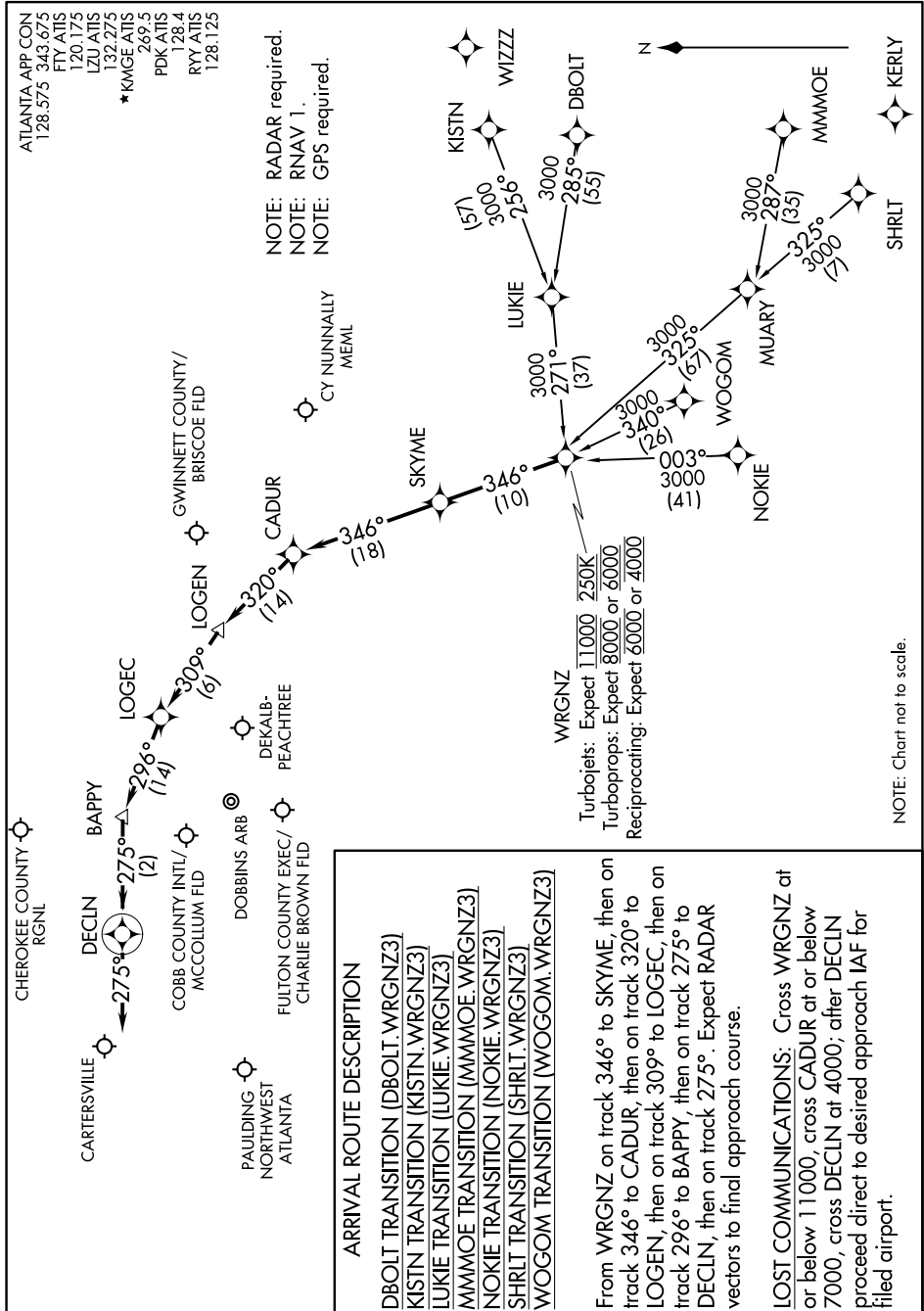


WRGNZ THREE ARRIVAL (RNAV)

SE-4, 17 APR 2025 to 15 MAY 2025



ATLANTA APP CON
128.575 343.675
FTY ATIS
120.175
LZU ATIS
132.275
★KMGZ ATIS
269.5
PDK ATIS
128.4
RYU ATIS
128.125

NOTE: RADAR required.
NOTE: RNAV 1.
NOTE: GPS required.

ARRIVAL ROUTE DESCRIPTION

DBOLT TRANSITION (DBOLT.WRGNZ3)
KISTN TRANSITION (KISTN.WRGNZ3)
LUKIE TRANSITION (LUKIE.WRGNZ3)
MMMEOE TRANSITION (MMMEOE.WRGNZ3)
NOKIE TRANSITION (NOKIE.WRGNZ3)
SHRLT TRANSITION (SHRLT.WRGNZ3)
WOGOM TRANSITION (WOGOM.WRGNZ3)

From WRGNZ on track 346° to SKYME, then on track 346° to CADUR, then on track 320° to LOGEN, then on track 309° to BAPPY, then on track 296° to LOGEC, then on track 275° to DECLIN, then on track 275°. Expect RADAR vectors to final approach course.

LOST COMMUNICATIONS: Cross WRGNZ at or below 11000, cross CADUR at or below 7000, cross DECLIN at 4000; after DECLIN proceed direct to desired approach IAF for filed airport.

Turbojets: Expect 11000 250K
 Turboprops: Expect 8000 or 6000
 Reciprocating: Expect 6000 or 4000

NOTE: Chart not to scale.

SE-4, 17 APR 2025 to 15 MAY 2025

WRGNZ THREE ARRIVAL (RNAV)