

SPOKANE, WASHINGTON

ILS or LOC RWY 23

LOC I-SKA 110.3	APCH CRS 231°	Rwy Idg 13,899 TDZE 2423 Arprt Elev 2462
---------------------------	-------------------------	---

[USAF]

FAIRCHILD AFB (KSKA)

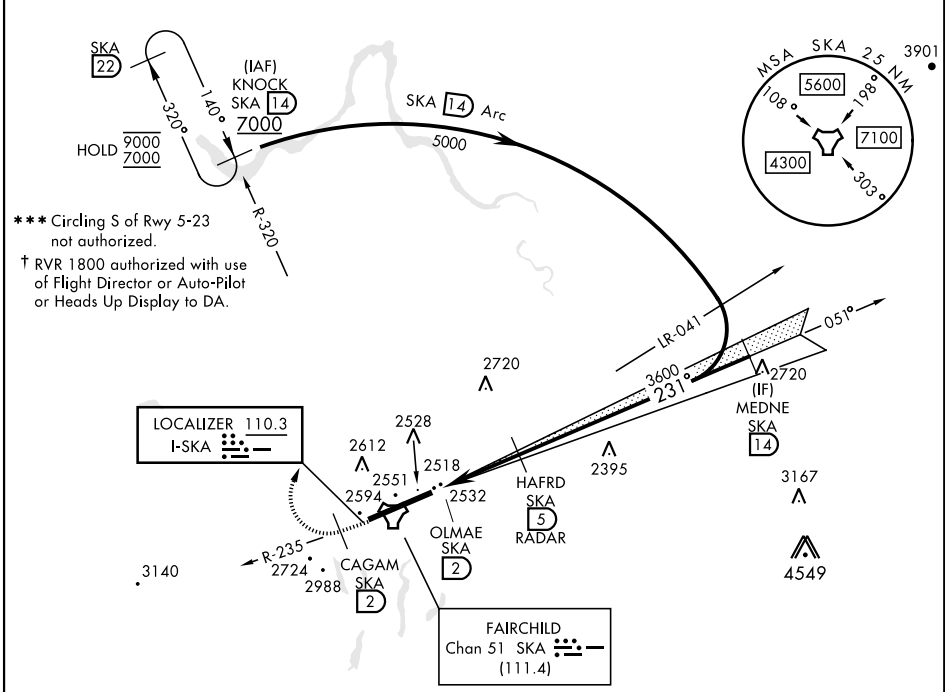
DME or RADAR reqrd for LOC. RADAR reqrd for KNOCK holding.



MISSED APPROACH: Climb to 7000 via SKA R-235. At CAGAM, turn right heading 005° to intcp SKA R-320 to KNOCK and hold, cont climb in hold to 7000.

▲ When ALS inop, increase RVR to 40 and vis to ¼ mile.
 ▲ When ALS inop, increase RVR to 55 and vis to 1 mile.

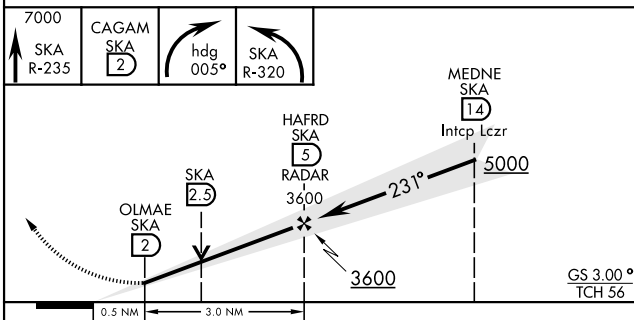
ATIS 257.625	SPOKANE APP CON 123.75 282.25 (208° - 028°) 133.35 263.0 (029° - 207°)	TOWER 120.35 233.7	GND CON 123.6 275.8
------------------------	--	------------------------------	-------------------------------



NW-1, 17 APR 2025 to 15 MAY 2025

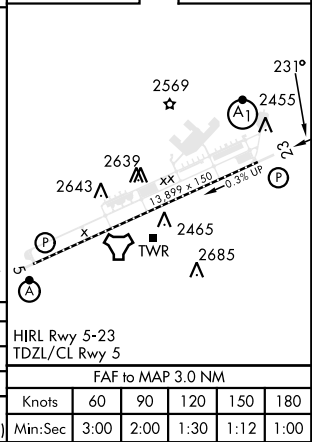
NW-1, 17 APR 2025 to 15 MAY 2025

EMERG SAFE ALT 100 NM 10,900



ELEV 2462	TDZE 2423
-----------	-----------

7000	CAGAM SKA 2	hdg 005°	SKA R-320
3600	OLMAE SKA 2	HAFRD SKA 5	RADAR 3600
5000	MEDNE SKA 14	Intcp Lezr	3600



CATEGORY	A	B	C	D	E
S-ILS 23 *†	2623/24		200	(200-½)	
S-LOC 23 **	2800/24	377 (400-½)	2800/35	377	(400-¾)
CIRCLING ***	2900-1	2920-1	3040-1½	3040-2	3600-3
	438 (500-1)	458 (500-1)	578 (600-1½)	578 (600-2)	1138 (1200-3)

HIRL Rwy 5-23					
TDZL/CL Rwy 5					
FAF to MAP 3.0 NM					
Knots	60	90	120	150	180
Min:Sec	3:00	2:00	1:30	1:12	1:00

SPOKANE, WASHINGTON

47°37'N-117°39'W

FAIRCHILD AFB (KSKA)

Amdt 4 03NOV22

ILS or LOC RWY 23